

**Anti-TSLP Reference Antibody (tezepelumab)
Recombinant Antibody
Catalog # APR10264**

Specification

Anti-TSLP Reference Antibody (tezepelumab) - Product Information

Application	FC, E, FTA
Primary Accession	O969D9
Reactivity	Cynomolgus, Human
Clonality	Monoclonal
Isotype	IgG2
Calculated MW	144.6 KDa

Anti-TSLP Reference Antibody (tezepelumab) - Additional Information

Target/Specificity
TSLP

Endotoxin
< 0.001EU/ µg,determined by LAL method.

Conjugation
Unconjugated

Expression system
CHO Cell

Format
Purified monoclonal antibody supplied in PBS, pH6.0, without preservative.This antibody is purified through a protein A column.

Storage
-80°C for 2 years under sterile conditions □ -20°C for 1 year under sterile conditions □ Avoid repeated freeze-thaw cycles.

Anti-TSLP Reference Antibody (tezepelumab) - Protein Information

Name TSLP

Function
[Isoform 1]: Cytokine that induces the release of T-cell- attracting chemokines from monocytes and, in particular, enhances the maturation of CD11c(+) dendritic cells. Can induce allergic inflammation by directly activating mast cells.

Cellular Location
Secreted.

Tissue Location

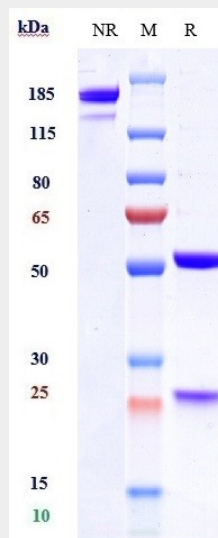
Isoform 1 is expressed in a number of tissues including heart, liver and prostate. Isoform 2 is the predominant form in keratinocytes of oral mucosa, skin and in salivary glands. It is secreted into saliva.

Anti-TSLP Reference Antibody (tezepelumab) - Protocols

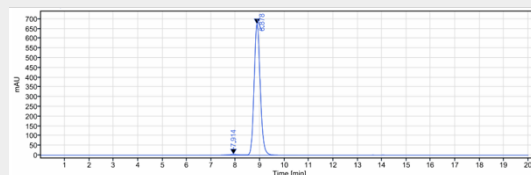
Provided below are standard protocols that you may find useful for product applications.

- [Western Blot](#)
- [Blocking Peptides](#)
- [Dot Blot](#)
- [Immunohistochemistry](#)
- [Immunofluorescence](#)
- [Immunoprecipitation](#)
- [Flow Cytometry](#)
- [Cell Culture](#)

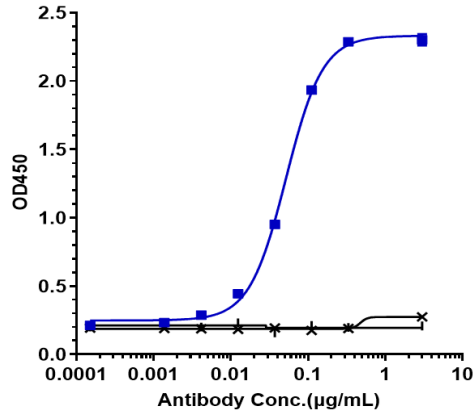
Anti-TSLP Reference Antibody (tezepelumab) - Images



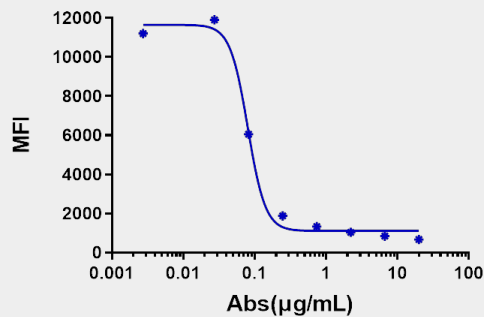
Anti-TSLP Reference Antibody (tezepelumab) on SDS-PAGE under reducing (R) condition. The gel was stained with Coomassie Blue. The purity of the protein is greater than 95%



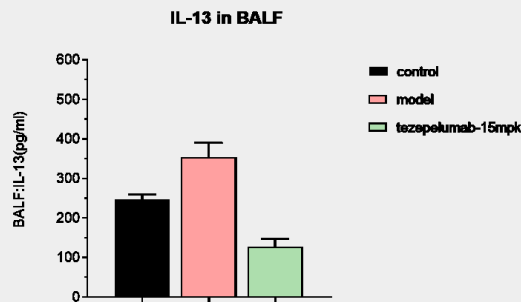
The purity of Anti-TSLP Reference Antibody (tezepelumab) is more than 98.64% ,determined by SEC-HPLC.



Immobilized human TSLP His at 2 µg/mL can bind Anti-TSLP Reference Antibody (tezepelumab) □ EC₅₀=0.0518 µg/mL



Anti-TSLP Reference Antibody (tezepelumab)-induced FACS Blocking activity was evaluated using TSLPR/IL7R-CHO-K. The IC₅₀ was approximately 0.0802 µg/mL.



Tezepelumab reduced levels of IL13 in BALF of OVA asthma model on B-hTSLP/hTSLPR mice. The result showed significant IL13 inhibition effects at 15 mpk.