

**Anti-CB1 / CNR1 Reference Antibody (nimacimab)
Recombinant Antibody
Catalog # APR10261****Specification**

Anti-CB1 / CNR1 Reference Antibody (nimacimab) - Product Information

Application	FC, E, FTA
Primary Accession	Q96F85
Reactivity	Cynomolgus, Human
Clonality	Monoclonal
Isotype	IgG4
Calculated MW	145 KDa

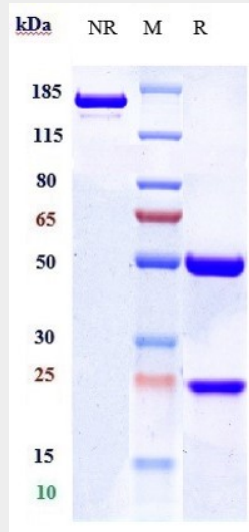
Anti-CB1 / CNR1 Reference Antibody (nimacimab) - Additional Information**Target/Specificity**
CB1 / CNR1**Endotoxin**
< 0.001EU/ µg,determined by LAL method.**Conjugation**
Unconjugated**Expression system**
CHO Cell**Format**
Purified monoclonal antibody supplied in PBS, pH6.0, without preservative.This antibody is purified through a protein A column.**Anti-CB1 / CNR1 Reference Antibody (nimacimab) - Protein Information****Name** CNRIP1**Synonyms** C2orf32**Function**
[Isoform 1]: Suppresses cannabinoid receptor CNR1-mediated tonic inhibition of voltage-gated calcium channels.**Anti-CB1 / CNR1 Reference Antibody (nimacimab) - Protocols**

Provided below are standard protocols that you may find useful for product applications.

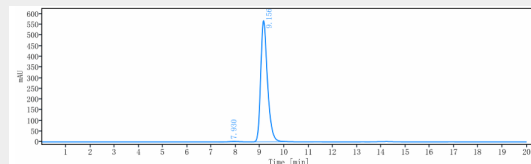
- [Western Blot](#)

- [Blocking Peptides](#)
- [Dot Blot](#)
- [Immunohistochemistry](#)
- [Immunofluorescence](#)
- [Immunoprecipitation](#)
- [Flow Cytometry](#)
- [Cell Culture](#)

Anti-CB1 / CNR1 Reference Antibody (nimacimab) - Images



Anti-CB1 / CNR1 Reference Antibody (nimacimab) on SDS-PAGE under reducing (R) condition. The gel was stained with Coomassie Blue. The purity of the protein is greater than 95%



The purity of Anti-CB1 / CNR1 Reference Antibody (nimacimab) is more than 99.42% ,determined by SEC-HPLC.