

**Anti-TROP2 Reference Antibody (Datopotamab)**  
**Recombinant Antibody**  
**Catalog # APR10257****Specification**

---

**Anti-TROP2 Reference Antibody (Datopotamab) - Product Information**

Application	FC, E, FTA
Primary Accession	<a href="#">P09758</a>
Reactivity	Human
Clonality	Monoclonal
Isotype	IgG1
Calculated MW	149.3 KDa

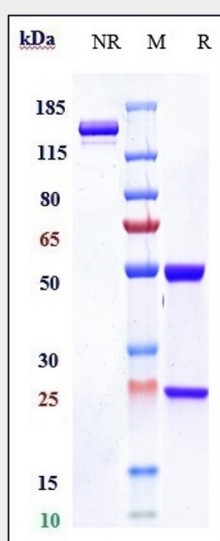
**Anti-TROP2 Reference Antibody (Datopotamab) - Additional Information****Target/Specificity**  
TROP2**Endotoxin**  
< 0.001EU/ µg,determined by LAL method.**Conjugation**  
Unconjugated**Expression system**  
CHO Cell**Format**  
Purified monoclonal antibody supplied in PBS, pH6.0, without preservative.This antibody is purified through a protein A column.**Anti-TROP2 Reference Antibody (Datopotamab) - Protein Information****Name** TACSTD2**Synonyms** GA733-1, M1S1, TROP2**Function**  
May function as a growth factor receptor.**Cellular Location**  
Membrane; Single-pass type I membrane protein.**Tissue Location**  
Placenta, pancreatic carcinoma cell lines.

## Anti-TROP2 Reference Antibody (Datopotamab) - Protocols

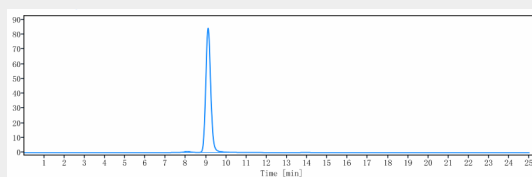
Provided below are standard protocols that you may find useful for product applications.

- [Western Blot](#)
- [Blocking Peptides](#)
- [Dot Blot](#)
- [Immunohistochemistry](#)
- [Immunofluorescence](#)
- [Immunoprecipitation](#)
- [Flow Cytometry](#)
- [Cell Culture](#)

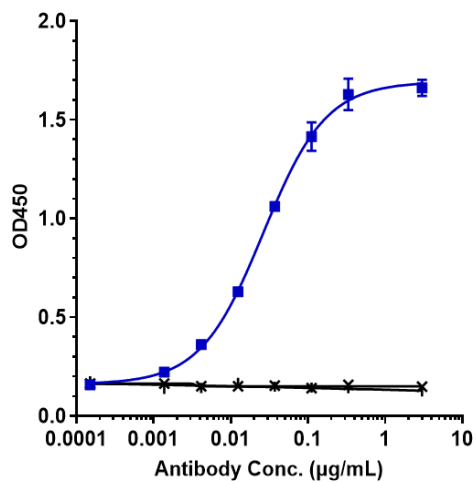
## Anti-TROP2 Reference Antibody (Datopotamab) - Images



Anti-TROP2 Reference Antibody (Datopotamab) on SDS-PAGE under reducing (R) condition. The gel was stained with Coomassie Blue. The purity of the protein is greater than 95%



The purity of Anti-TROP2 Reference Antibody (Datopotamab) is more than 98.09%, determined by SEC-HPLC.



Immobilized human TROP2(ECD) His at 2 µg/mL can bind Anti-TROP2 Reference Antibody (Datopotamab)  $EC_{50}=0.0261$  µg/mL