

**Anti-Amyloid Alpha Reference Antibody (birtamimab)
Recombinant Antibody
Catalog # APR10235****Specification**

Anti-Amyloid Alpha Reference Antibody (birtamimab) - Product Information

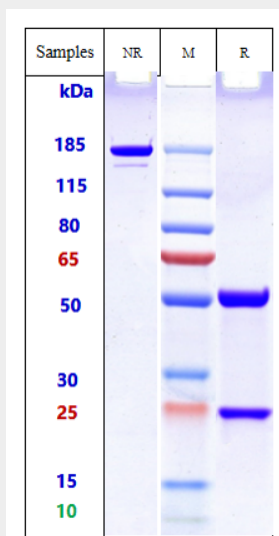
Application	FC, E, FTA
Primary Accession	PODJI8
Reactivity	Human, Mouse
Clonality	Monoclonal
Isotype	IgG1
Calculated MW	146.44 KDa

Anti-Amyloid Alpha Reference Antibody (birtamimab) - Additional Information**Target/Specificity**
Amyloid Alpha**Endotoxin**
< 0.001EU/ µg,determined by LAL method.**Conjugation**
Unconjugated**Expression system**
CHO Cell**Format**
Purified monoclonal antibody supplied in PBS, pH6.0, without preservative.This antibody is purified through a protein A column.**Anti-Amyloid Alpha Reference Antibody (birtamimab) - Protein Information****Name** SAA1**Function**
Major acute phase protein.**Cellular Location**
Secreted.**Tissue Location**
Expressed by the liver; secreted in plasma (at protein level).**Anti-Amyloid Alpha Reference Antibody (birtamimab) - Protocols**

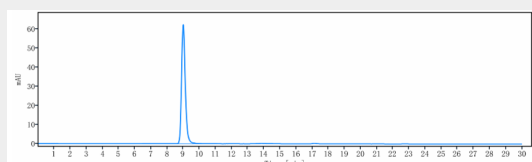
Provided below are standard protocols that you may find useful for product applications.

- [Western Blot](#)
- [Blocking Peptides](#)
- [Dot Blot](#)
- [Immunohistochemistry](#)
- [Immunofluorescence](#)
- [Immunoprecipitation](#)
- [Flow Cytometry](#)
- [Cell Culture](#)

Anti-Amyloid Alpha Reference Antibody (birtamimab) - Images



Anti-Amyloid Alpha Reference Antibody (birtamimab) on SDS-PAGE under reducing (R) condition. The gel was stained with Coomassie Blue. The purity of the protein is greater than 95%



The purity of Anti-Amyloid Alpha Reference Antibody (birtamimab) is more than 99.11%, determined by SEC-HPLC.