

**Anti-CLEC4C Reference Antibody (BIIB059)**  
**Recombinant Antibody**  
**Catalog # APR10234****Specification**

---

**Anti-CLEC4C Reference Antibody (BIIB059) - Product Information**

Application	FC, E, FTA
Primary Accession	<a href="#">Q8WTT0</a>
Reactivity	Cynomolgus, Human
Clonality	Monoclonal
Isotype	IgG1
Calculated MW	146.6 KDa

**Anti-CLEC4C Reference Antibody (BIIB059) - Additional Information****Target/Specificity**  
CLEC4C**Endotoxin**  
< 0.001EU/ µg,determined by LAL method.**Conjugation**  
Unconjugated**Expression system**  
CHO Cell**Format**  
Purified monoclonal antibody supplied in PBS, pH6.0, without preservative.This antibody is purified through a protein A column.**Anti-CLEC4C Reference Antibody (BIIB059) - Protein Information****Name** CLEC4C**Synonyms** BDCA2, CLECSF11, CLECSF7, DLEC, HECL**Function**

Lectin-type cell surface receptor which may play a role in antigen capturing by dendritic cells (PubMed:<a href="http://www.uniprot.org/citations/11748283" target="\_blank">11748283</a>, PubMed:<a href="http://www.uniprot.org/citations/21880719" target="\_blank">21880719</a>, PubMed:<a href="http://www.uniprot.org/citations/25995448" target="\_blank">25995448</a>). Specifically recognizes non-sialylated galactose- terminated biantennary glycans containing the trisaccharide epitope Gal(beta1-3/4)GlcNAc(beta1-2)Man (PubMed:<a href="http://www.uniprot.org/citations/21880719" target="\_blank">21880719</a>, PubMed:<a href="http://www.uniprot.org/citations/25995448" target="\_blank">25995448</a>). Binds to serum IgG (PubMed:<a href="http://www.uniprot.org/citations/25995448" target="\_blank">25995448</a>). Efficiently targets ligand into antigen-processing and

peptide-loading compartments for presentation to T-cells (PubMed:<a href="http://www.uniprot.org/citations/11748283" target="\_blank">11748283</a>). May mediate potent inhibition of induction of IFN-alpha/beta expression in plasmacytoid dendritic cells (PubMed:<a href="http://www.uniprot.org/citations/11748283" target="\_blank">11748283</a>, PubMed:<a href="http://www.uniprot.org/citations/21880719" target="\_blank">21880719</a>). May act as a signaling receptor that activates protein-tyrosine kinases and mobilizes intracellular calcium (PubMed:<a href="http://www.uniprot.org/citations/11748283" target="\_blank">11748283</a>).

#### Cellular Location

Cell membrane; Single-pass type II membrane protein

#### Tissue Location

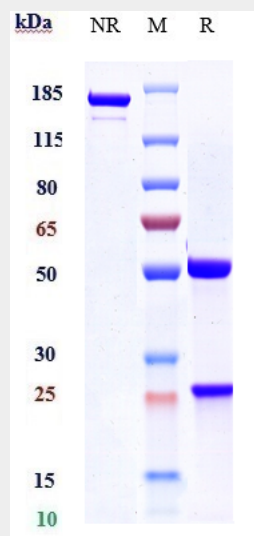
Expressed in plasmacytoid dendritic cells (PDCs). Constitutively expressed in immature monocyte-derived dendritic cells (iMDDC) and is significantly down-regulated upon maturation with LPS but not with TNF-alpha.

### Anti-CLEC4C Reference Antibody (BIIB059) - Protocols

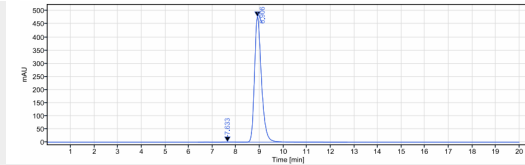
Provided below are standard protocols that you may find useful for product applications.

- [Western Blot](#)
- [Blocking Peptides](#)
- [Dot Blot](#)
- [Immunohistochemistry](#)
- [Immunofluorescence](#)
- [Immunoprecipitation](#)
- [Flow Cytometry](#)
- [Cell Culture](#)

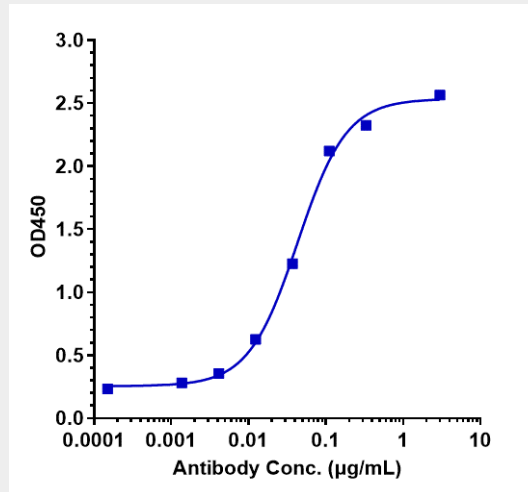
### Anti-CLEC4C Reference Antibody (BIIB059) - Images



Anti-CLEC4C Reference Antibody (BIIB059) on SDS-PAGE under reducing (R) condition. The gel was stained with Coomassie Blue. The purity of the protein is greater than 95%



The purity of Anti-CLEC4C Reference Antibody (BIIB059) is more than 99.42% ,determined by SEC-HPLC.



Immobilized Ma CLEC4C His at 2 µg/mL can bind Anti-CLEC4C Reference Antibody (BIIB059) EC50=0.04315 µg/mL