

**Anti-Mesothelin Reference Antibody (anetumab)
Recombinant Antibody
Catalog # APR10231**

Specification

Anti-Mesothelin Reference Antibody (anetumab) - Product Information

Application	FC, E, FTA
Primary Accession	O13421
Reactivity	Human, Mouse
Clonality	Monoclonal
Isotype	IgG1
Calculated MW	143.8 KDa

Anti-Mesothelin Reference Antibody (anetumab) - Additional Information

Target/Specificity
Mesothelin

Endotoxin
< 0.001EU/ µg,determined by LAL method.

Conjugation
Unconjugated

Expression system
CHO Cell

Format
Purified monoclonal antibody supplied in PBS, pH6.0, without preservative.This antibody is purified through a protein A column.

Storage
-80°C for 2 years under sterile conditions □ -20°C for 1 year under sterile conditions □ Avoid repeated freeze-thaw cycles.

Anti-Mesothelin Reference Antibody (anetumab) - Protein Information

Name MSLN

Synonyms MPF

Function
Membrane-anchored forms may play a role in cellular adhesion.

Cellular Location
Cell membrane; Lipid-anchor, GPI-anchor. Golgi apparatus [Isoform 3]: Secreted.

Tissue Location

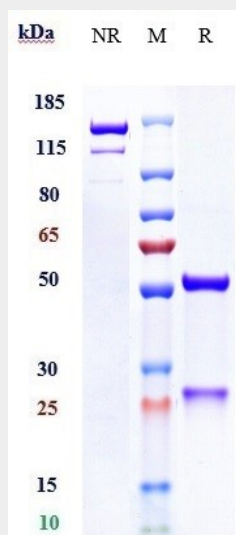
Expressed in lung. Expressed at low levels in heart, placenta and kidney. Expressed in mesothelial cells. Highly expressed in mesotheliomas, ovarian cancers, and some squamous cell carcinomas (at protein level).

Anti-Mesothelin Reference Antibody (anetumab) - Protocols

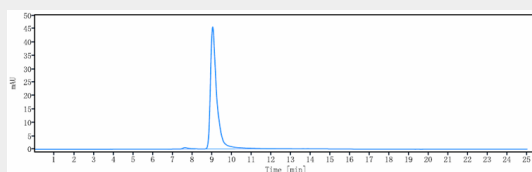
Provided below are standard protocols that you may find useful for product applications.

- [Western Blot](#)
- [Blocking Peptides](#)
- [Dot Blot](#)
- [Immunohistochemistry](#)
- [Immunofluorescence](#)
- [Immunoprecipitation](#)
- [Flow Cytometry](#)
- [Cell Culture](#)

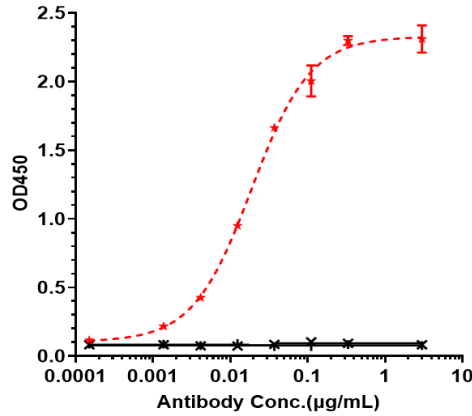
Anti-Mesothelin Reference Antibody (anetumab) - Images



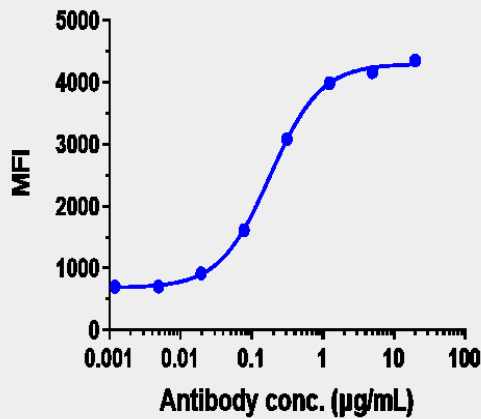
Anti-Mesothelin Reference Antibody (anetumab) on SDS-PAGE under reducing (R) condition. The gel was stained with Coomassie Blue. The purity of the protein is greater than 95%



The purity of Anti-Mesothelin Reference Antibody (anetumab) is more than 98.58%, determined by SEC-HPLC.



Immobilized human Mesothelin His at 2 µg/mL can bind Anti-Mesothelin Reference Antibody (anetumab) EC50=0.01877 µg/mL



ASPC-1 cells were stained with Anti-Mesothelin Reference Antibody (anetumab) and negative control protein respectively, washed and then followed by PE and analyzed with FACS, EC291=0.1822 µg/mL