

**Anti-MMP9 Reference Antibody (andecaliximab)  
Recombinant Antibody  
Catalog # APR10230**

**Specification**

---

**Anti-MMP9 Reference Antibody (andecaliximab) - Product Information**

Application	FC, E, FTA
Primary Accession	<a href="#">P14780</a>
Reactivity	Rat, Cynomolgus, Human
Clonality	Monoclonal
Isotype	IgG4
Calculated MW	145 KDa

**Anti-MMP9 Reference Antibody (andecaliximab) - Additional Information**

**Target/Specificity**  
MMP9

**Endotoxin**  
< 0.001EU/ µg,determined by LAL method.

**Conjugation**  
Unconjugated

**Expression system**  
CHO Cell

**Format**  
Purified monoclonal antibody supplied in PBS, pH6.0, without preservative.This antibody is purified through a protein A column.

**Anti-MMP9 Reference Antibody (andecaliximab) - Protein Information**

**Name** MMP9

**Synonyms** CLG4B

**Function**  
Matrix metalloproteinase that plays an essential role in local proteolysis of the extracellular matrix and in leukocyte migration (PubMed:[12879005](http://www.uniprot.org/citations/12879005), PubMed:[1480034](http://www.uniprot.org/citations/1480034), PubMed:[2551898](http://www.uniprot.org/citations/2551898)). Could play a role in bone osteoclastic resorption (By similarity). Cleaves KiSS1 at a Gly-I-Leu bond (PubMed:[12879005](http://www.uniprot.org/citations/12879005)). Cleaves NINJ1 to generate the Secreted ninjurin-1 form (PubMed:[32883094](http://www.uniprot.org/citations/32883094)). Cleaves type IV and type V collagen into large C-terminal three quarter fragments and shorter N-terminal one quarter fragments (PubMed:[1480034](http://www.uniprot.org/citations/1480034))

target="\_blank">1480034</a>). Degrades fibronectin but not laminin or Pz-peptide.

#### Cellular Location

Secreted, extracellular space, extracellular matrix

#### Tissue Location

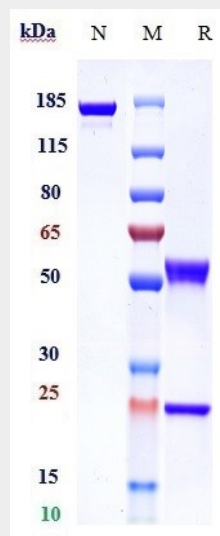
Detected in neutrophils (at protein level) (PubMed:7683678). Produced by normal alveolar macrophages and granulocytes.

### Anti-MMP9 Reference Antibody (andecaliximab) - Protocols

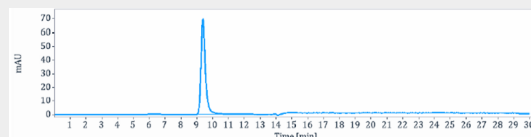
Provided below are standard protocols that you may find useful for product applications.

- [Western Blot](#)
- [Blocking Peptides](#)
- [Dot Blot](#)
- [Immunohistochemistry](#)
- [Immunofluorescence](#)
- [Immunoprecipitation](#)
- [Flow Cytometry](#)
- [Cell Culture](#)

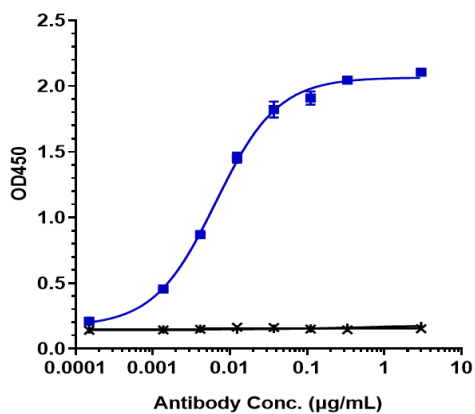
### Anti-MMP9 Reference Antibody (andecaliximab) - Images



Anti-MMP9 Reference Antibody (andecaliximab) on SDS-PAGE under reducing (R) condition. The gel was stained with Coomassie Blue. The purity of the protein is greater than 90%



The purity of Anti-MMP9 Reference Antibody (andecaliximab) is more than 95%, determined by SEC-HPLC.



Immobilized human MMP9 His at 2 µg/mL can bind Anti-MMP9 Reference Antibody (andecaliximab)  $\square$ EC50=0.006577 µg/mL