

**Anti-Mesothelin Reference Antibody (amatuximab)
Recombinant Antibody
Catalog # APR10229**

Specification

Anti-Mesothelin Reference Antibody (amatuximab) - Product Information

Application	FC, E, FTA
Primary Accession	O13421
Reactivity	Cynomolgus, Human, Mouse
Clonality	Monoclonal
Isotype	IgG1
Calculated MW	144.32 KDa

Anti-Mesothelin Reference Antibody (amatuximab) - Additional Information

Target/Specificity
Mesothelin

Endotoxin
< 0.001EU/ µg,determined by LAL method.

Conjugation
Unconjugated

Expression system
CHO Cell

Format
Purified monoclonal antibody supplied in PBS, pH6.0, without preservative.This antibody is purified through a protein A column.

Anti-Mesothelin Reference Antibody (amatuximab) - Protein Information

Name MSLN

Synonyms MPF

Function
Membrane-anchored forms may play a role in cellular adhesion.

Cellular Location
Cell membrane; Lipid-anchor, GPI-anchor. Golgi apparatus [Isoform 3]: Secreted.

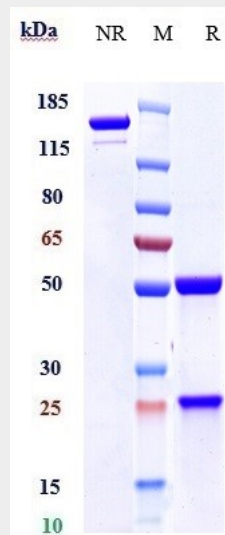
Tissue Location
Expressed in lung. Expressed at low levels in heart, placenta and kidney. Expressed in mesothelial cells. Highly expressed in mesotheliomas, ovarian cancers, and some squamous cell carcinomas (at protein level).

Anti-Mesothelin Reference Antibody (amatuximab) - Protocols

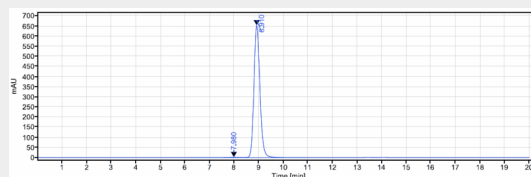
Provided below are standard protocols that you may find useful for product applications.

- [Western Blot](#)
- [Blocking Peptides](#)
- [Dot Blot](#)
- [Immunohistochemistry](#)
- [Immunofluorescence](#)
- [Immunoprecipitation](#)

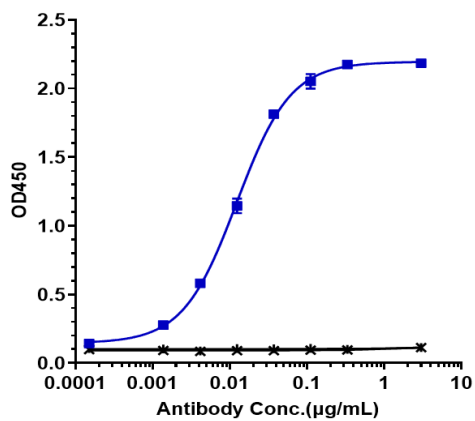
Anti-Mesothelin Reference Antibody (amatuximab) - Images



Anti-Mesothelin Reference Antibody (amatuximab) on SDS-PAGE under reducing (R) condition. The gel was stained with Coomassie Blue. The purity of the protein is greater than 95%



The purity of Anti-Mesothelin Reference Antibody (amatuximab) is more than 99.47%, determined by SEC-HPLC.



Immobilized human Mesothelin His at 2 µg/mL can bind Anti-Mesothelin Reference Antibody (amatuximab) $EC_{50}=0.01226$ µg/mL