

Anti-LILRB2 / ILT4 / CD85d Reference Antibody (JTX-8064)
Recombinant Antibody
Catalog # APR10225**Specification**

Anti-LILRB2 / ILT4 / CD85d Reference Antibody (JTX-8064) - Product Information

Application	FC, E, FTA
Primary Accession	O8N423
Reactivity	Cynomolgus, Human, Mouse
Clonality	Monoclonal
Isotype	IgG4
Calculated MW	145 KDa

Anti-LILRB2 / ILT4 / CD85d Reference Antibody (JTX-8064) - Additional Information**Target/Specificity**
LILRB2 / ILT4 / CD85d**Endotoxin**
< 0.001EU/ µg, determined by LAL method.**Conjugation**
Unconjugated**Expression system**
CHO Cell**Format**
Purified monoclonal antibody supplied in PBS, pH6.0, without preservative. This antibody is purified through a protein A column.**Anti-LILRB2 / ILT4 / CD85d Reference Antibody (JTX-8064) - Protein Information****Name** LILRB2 ([HGNC:6606](#))**Function**
Receptor for class I MHC antigens. Recognizes a broad spectrum of HLA-A, HLA-B, HLA-C, HLA-G and HLA-F alleles (PubMed: [11169396](http://www.uniprot.org/citations/11169396), PubMed: [12853576](http://www.uniprot.org/citations/12853576), PubMed: [16455647](http://www.uniprot.org/citations/16455647), PubMed: [20448110](http://www.uniprot.org/citations/20448110), PubMed: [27859042](http://www.uniprot.org/citations/27859042)). Involved in the down-regulation of the immune response and the development of tolerance. Recognizes HLA-G in complex with B2M/beta-2 microglobulin and a nonamer self-peptide (peptide-bound HLA-G-B2M) triggering differentiation of type 1 regulatory T cells and myeloid-derived suppressor cells, both of which actively maintain maternal-fetal tolerance (PubMed: [16455647](http://www.uniprot.org/citations/16455647), PubMed: [20448110](http://www.uniprot.org/citations/20448110)).

target="_blank">20448110, PubMed:27859042). Competes with CD8A for binding to class I MHC antigens. Inhibits FCGR1A-mediated phosphorylation of cellular proteins and mobilization of intracellular calcium ions (PubMed:11875462, PubMed:12853576, PubMed:9548455, PubMed:9842885).

Cellular Location

Cell membrane; Single-pass type I membrane protein

Tissue Location

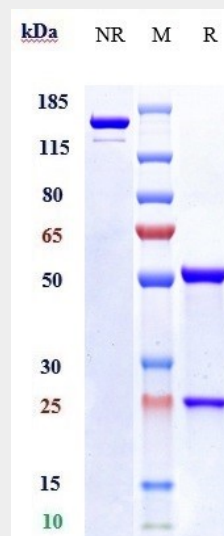
Expressed in monocytes and at lower levels in myeloid and plasmacytoid dendritic cells. Expressed in tolerogenic IL10-producing dendritic cells (PubMed:20448110). Expressed in myeloid-derived suppressor cells during pregnancy (PubMed:27859042). Detected at low levels in natural killer (NK) cells. Expressed in B cells

Anti-LILRB2 / ILT4 / CD85d Reference Antibody (JTX-8064) - Protocols

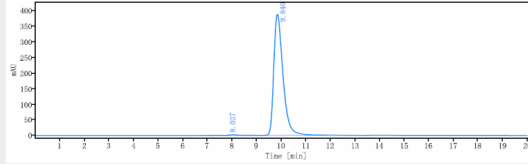
Provided below are standard protocols that you may find useful for product applications.

- [Western Blot](#)
- [Blocking Peptides](#)
- [Dot Blot](#)
- [Immunohistochemistry](#)
- [Immunofluorescence](#)
- [Immunoprecipitation](#)
- [Flow Cytometry](#)
- [Cell Culture](#)

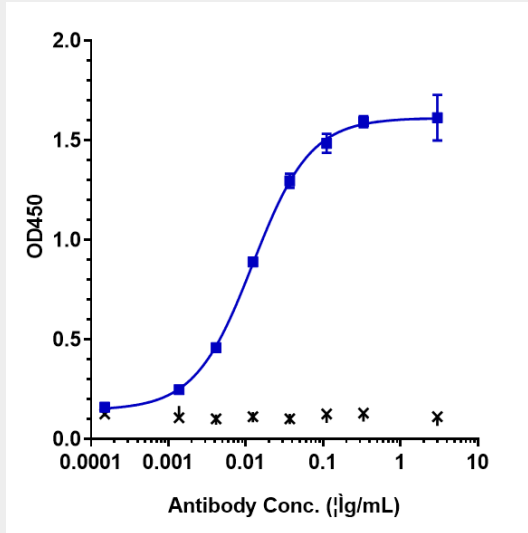
Anti-LILRB2 / ILT4 / CD85d Reference Antibody (JTX-8064) - Images



Anti-LILRB2 / ILT4 / CD85d Reference Antibody (JTX-8064) on SDS-PAGE under reducing (R) condition. The gel was stained with Coomassie Blue. The purity of the protein is greater than 90%



The purity of Anti-LILRB2 / ILT4 / CD85d Reference Antibody (JTX-8064) is more than 98.96%, determined by SEC-HPLC.



Immobilized human LILRB2 His at 2 µg/mL can bind Anti-LILRB2 / ILT4 / CD85d Reference Antibody (JTX-8064) □ EC50=0.01229 µg/mL