

Anti-TROP2 Reference Antibody (sacituzumab)
Recombinant Antibody
Catalog # APR10216

Specification

Anti-TROP2 Reference Antibody (sacituzumab) - Product Information

Application	FC, E, FTA
Primary Accession	P09758
Reactivity	Human
Clonality	Monoclonal
Isotype	IgG1
Calculated MW	145.52 KDa

Anti-TROP2 Reference Antibody (sacituzumab) - Additional Information

Target/Specificity
TROP2

Endotoxin
< 0.001EU/ µg,determined by LAL method.

Conjugation
Unconjugated

Expression system
CHO Cell

Format
Purified monoclonal antibody supplied in PBS, pH6.0, without preservative.This antibody is purified through a protein A column.

Storage
-80°C for 2 years under sterile conditions □ -20°C for 1 year under sterile conditions □ Avoid repeated freeze-thaw cycles.

Anti-TROP2 Reference Antibody (sacituzumab) - Protein Information

Name TACSTD2

Synonyms GA733-1, M1S1, TROP2

Function
May function as a growth factor receptor.

Cellular Location
Membrane; Single-pass type I membrane protein.

Tissue Location

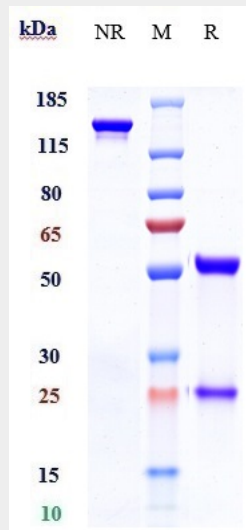
Placenta, pancreatic carcinoma cell lines.

Anti-TROP2 Reference Antibody (sacituzumab) - Protocols

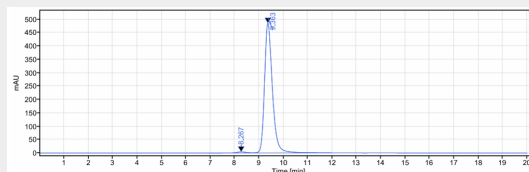
Provided below are standard protocols that you may find useful for product applications.

- [Western Blot](#)
- [Blocking Peptides](#)
- [Dot Blot](#)
- [Immunohistochemistry](#)
- [Immunofluorescence](#)
- [Immunoprecipitation](#)
- [Flow Cytometry](#)
- [Cell Culture](#)

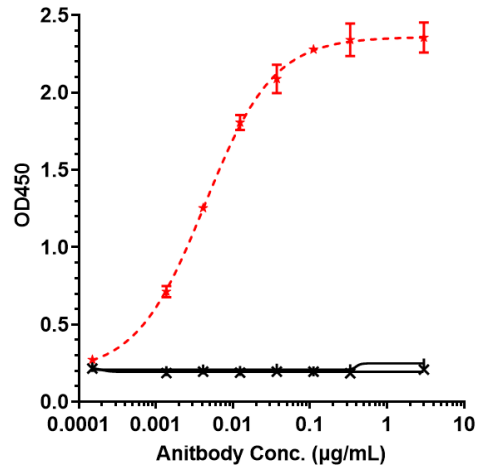
Anti-TROP2 Reference Antibody (sacituzumab) - Images



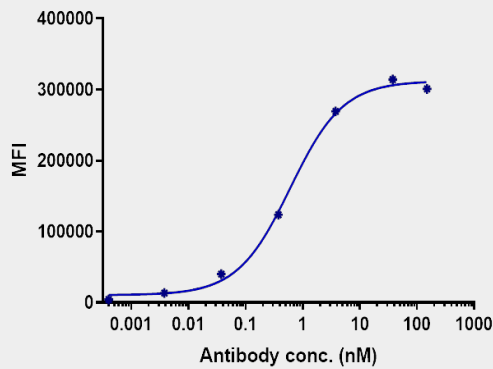
Anti-TROP2 Reference Antibody (sacituzumab) on SDS-PAGE under reducing (R) condition. The gel was stained with Coomassie Blue. The purity of the protein is greater than 95%



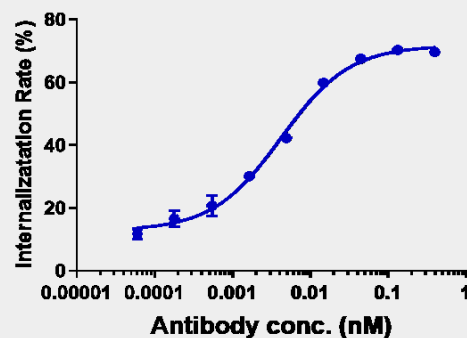
The purity of Anti-TROP2 Reference Antibody (sacituzumab) is more than 96.23%, determined by SEC-HPLC.



Immobilized human TROP2 His at 2 µg/mL can bind Anti-TROP2 Reference Antibody (sacituzumab) □EC₅₀=0.004316 µg/mL



Human TROP2 HEK293 cells were stained with Anti-TROP2 Reference Antibody (sacituzumab) and negative control protein respectively, washed and then followed by PE and analyzed with FACS, EC₂₇₆=0.4071 µg/mL



The endocytosis ratio sacituzumab by human TROP2 HEK293 increased with the increase of antibody concentration, and the Internalization Rate (%) reached 70% at antibody concentration of 0.4 nM.