

**Anti-ROR2 Reference Antibody (Ozuriftamab)
Recombinant Antibody
Catalog # APR10208****Specification**

Anti-ROR2 Reference Antibody (Ozuriftamab) - Product Information

Application	FC, E, FTA
Primary Accession	Q01974
Reactivity	Cynomolgus, Human, Mouse
Clonality	Monoclonal
Isotype	IgG1
Calculated MW	144.98 KDa

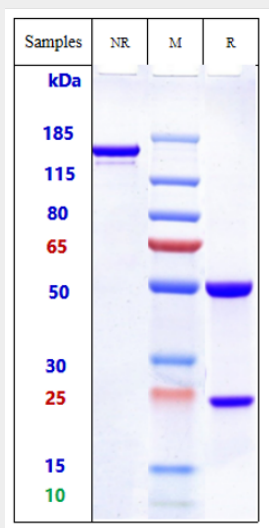
Anti-ROR2 Reference Antibody (Ozuriftamab) - Additional Information**Target/Specificity**
ROR2**Endotoxin**
< 0.001EU/ µg,determined by LAL method.**Conjugation**
Unconjugated**Expression system**
CHO Cell**Format**
Purified monoclonal antibody supplied in PBS, pH6.0, without preservative.This antibody is purified through a protein A column.**Anti-ROR2 Reference Antibody (Ozuriftamab) - Protein Information****Name** ROR2**Synonyms** NTRKR2**Function**
Tyrosine-protein kinase receptor which may be involved in the early formation of the chondrocytes. It seems to be required for cartilage and growth plate development (By similarity). Phosphorylates YWHAB, leading to induction of osteogenesis and bone formation (PubMed:17717073). In contrast, has also been shown to have very little tyrosine kinase activity in vitro. May act as a receptor for wnt ligand WNT5A which may result in the inhibition of WNT3A-mediated signaling (PubMed:25029443).**Cellular Location**
Cell membrane; Single-pass type I membrane protein

Anti-ROR2 Reference Antibody (Ozuriftamab) - Protocols

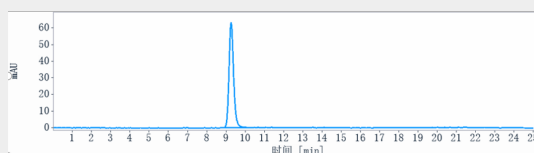
Provided below are standard protocols that you may find useful for product applications.

- [Western Blot](#)
- [Blocking Peptides](#)
- [Dot Blot](#)
- [Immunohistochemistry](#)
- [Immunofluorescence](#)
- [Immunoprecipitation](#)
- [Flow Cytometry](#)
- [Cell Culture](#)

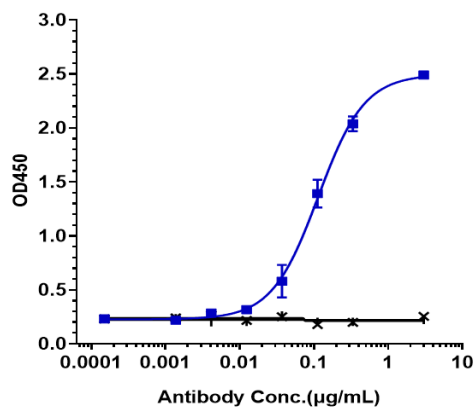
Anti-ROR2 Reference Antibody (Ozuriftamab) - Images



Anti-ROR2 Reference Antibody (Ozuriftamab) on SDS-PAGE under reducing (R) condition. The gel was stained with Coomassie Blue. The purity of the protein is greater than 95%



The purity of Anti-ROR2 Reference Antibody (Ozuriftamab) is more than 99.73% ,determined by SEC-HPLC.



Immobilized human ROR2 His at 2 µg/mL can bind Anti-ROR2 Reference Antibody (Ozuriftamab) $EC_{50}=0.114$ µg/mL