

**Anti-ROR1 Reference Antibody (zilovertamab vedotin)
Recombinant Antibody
Catalog # APR10207****Specification**

Anti-ROR1 Reference Antibody (zilovertamab vedotin) - Product Information

Application	FC, E, FTA
Primary Accession	Q01973
Reactivity	Human
Clonality	Monoclonal
Isotype	IgG1
Calculated MW	145.12 KDa

Anti-ROR1 Reference Antibody (zilovertamab vedotin) - Additional Information**Target/Specificity**

ROR1

Endotoxin

< 0.001EU/ µg, determined by LAL method.

Conjugation

MMAE

Expression system

CHO Cell

Format

Purified monoclonal antibody supplied in PBS, pH6.0, without preservative. This antibody is purified through a protein A column.

Anti-ROR1 Reference Antibody (zilovertamab vedotin) - Protein Information**Name** ROR1**Synonyms** NTRKR1**Function**

Has very low kinase activity in vitro and is unlikely to function as a tyrosine kinase in vivo (PubMed: [25029443](http://www.uniprot.org/citations/25029443)). Receptor for ligand WNT5A which activate downstream NFκB signaling pathway and may result in the inhibition of WNT3A-mediated signaling (PubMed: [25029443](http://www.uniprot.org/citations/25029443), PubMed: [27162350](http://www.uniprot.org/citations/27162350)). In inner ear, crucial for spiral ganglion neurons to innervate auditory hair cells (PubMed: [27162350](http://www.uniprot.org/citations/27162350)). Via IGFBP5 ligand, forms a complex with ERBB2 to enhance CREB oncogenic signaling (PubMed: [36949068](http://www.uniprot.org/citations/36949068)).

Cellular Location

Membrane; Single-pass type I membrane protein. Cell projection, axon
{ECO:0000250|UniProtKB:Q9Z139}

Tissue Location

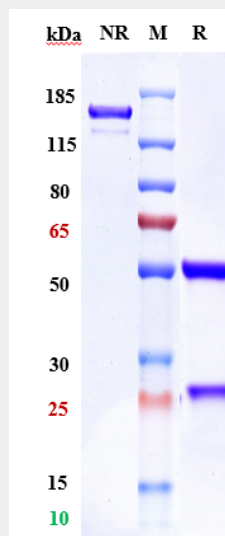
Expressed strongly in human heart, lung and kidney, but weakly in the CNS. Isoform Short is strongly expressed in fetal and adult CNS and in a variety of human cancers, including those originating from CNS or PNS neuroectoderm

Anti-ROR1 Reference Antibody (zilovertamab vedotin) - Protocols

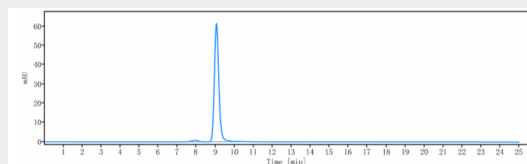
Provided below are standard protocols that you may find useful for product applications.

- [Western Blot](#)
- [Blocking Peptides](#)
- [Dot Blot](#)
- [Immunohistochemistry](#)
- [Immunofluorescence](#)
- [Immunoprecipitation](#)
- [Flow Cytometry](#)
- [Cell Culture](#)

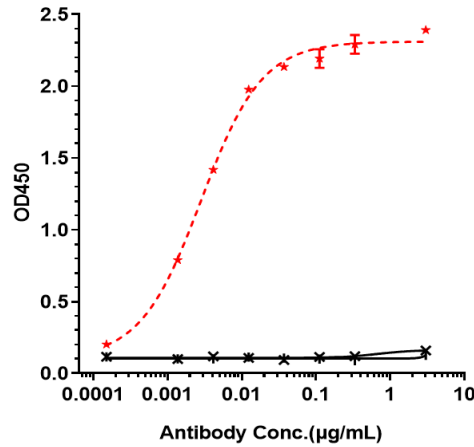
Anti-ROR1 Reference Antibody (zilovertamab vedotin) - Images



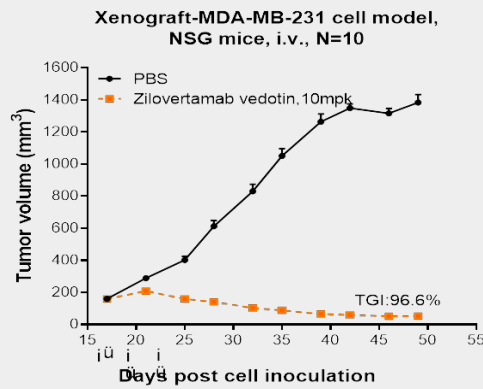
Anti-ROR1 Reference Antibody (zilovertamab vedotin) on SDS-PAGE under reducing (R) condition. The gel was stained with Coomassie Blue. The purity of the protein is greater than 95%



The purity of Anti-ROR1 Reference Antibody (zilovertamab vedotin) is more than 98.21%, determined by SEC-HPLC.



Immobilized human ROR1 His at 2 µg/mL can bind Anti-ROR1 Reference Antibody (zilovetamab vedotin) □EC50=0.002833 µg/mL



zilovetamab vedotin inhibited the tumor growth of MDA-MB-231 on NSG mice. The result showed significant anti-tumor effects, with a tumor inhibition rate (TGI) of 96.6% at 10 mpk.