

**Anti-CCL2 / MCP1 Reference Antibody (carlumab)
Recombinant Antibody
Catalog # APR10197**

Specification

Anti-CCL2 / MCP1 Reference Antibody (carlumab) - Product Information

Application	FC, E, FTA
Primary Accession	P13500
Reactivity	Human, Mouse
Clonality	Monoclonal
Isotype	IgG1
Calculated MW	145 KDa

Anti-CCL2 / MCP1 Reference Antibody (carlumab) - Additional Information

Target/Specificity
CCL2 / MCP1

Endotoxin
< 0.001EU/ µg, determined by LAL method.

Conjugation
Unconjugated

Expression system
CHO Cell

Format
Purified monoclonal antibody supplied in PBS, pH6.0, without preservative. This antibody is purified through a protein A column.

Anti-CCL2 / MCP1 Reference Antibody (carlumab) - Protein Information

Name CCL2

Synonyms MCP1, SCYA2

Function
Acts as a ligand for C-C chemokine receptor CCR2 (PubMed: [10529171](http://www.uniprot.org/citations/10529171), PubMed: [10587439](http://www.uniprot.org/citations/10587439), PubMed: [9837883](http://www.uniprot.org/citations/9837883)). Signals through binding and activation of CCR2 and induces a strong chemotactic response and mobilization of intracellular calcium ions (PubMed: [10587439](http://www.uniprot.org/citations/10587439), PubMed: [9837883](http://www.uniprot.org/citations/9837883)). Exhibits a chemotactic activity for monocytes and basophils but not neutrophils or eosinophils (PubMed: [8195247](http://www.uniprot.org/citations/8195247), PubMed: [8627182](http://www.uniprot.org/citations/8627182)

target="_blank">8627182, PubMed:9792674). May be involved in the recruitment of monocytes into the arterial wall during the disease process of atherosclerosis (PubMed:8107690).

Cellular Location

Secreted

Tissue Location

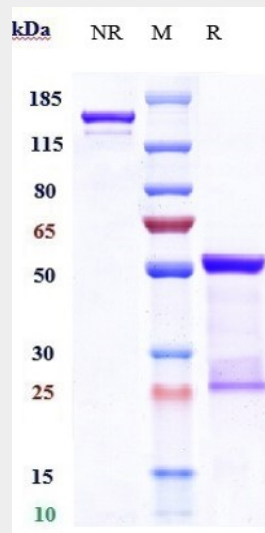
Expressed in the seminal plasma, endometrial fluid and follicular fluid (at protein level) (PubMed:23765988). Expressed in monocytes (PubMed:2513477).

Anti-CCL2 / MCP1 Reference Antibody (carlumab) - Protocols

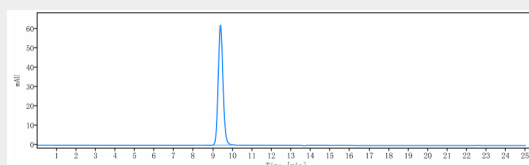
Provided below are standard protocols that you may find useful for product applications.

- [Western Blot](#)
- [Blocking Peptides](#)
- [Dot Blot](#)
- [Immunohistochemistry](#)
- [Immunofluorescence](#)
- [Immunoprecipitation](#)
- [Flow Cytometry](#)
- [Cell Culture](#)

Anti-CCL2 / MCP1 Reference Antibody (carlumab) - Images

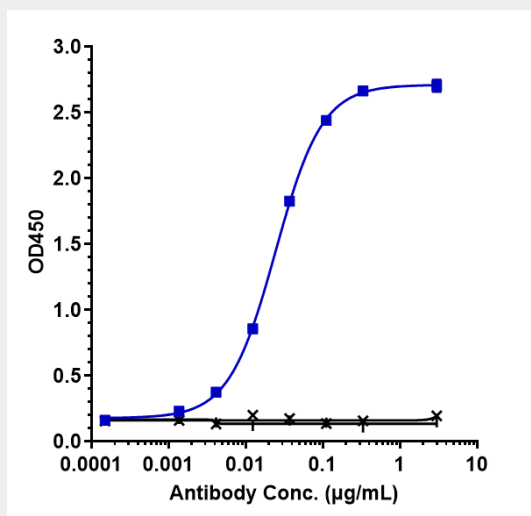


Anti-CCL2 / MCP1 Reference Antibody (carlumab) on SDS-PAGE under reducing (R) condition. The gel was stained with Coomassie Blue. The purity of the protein is greater than 90%



The purity of Anti-CCL2 / MCP1 Reference Antibody (carlumab) is more than 95% ,determined by

SEC-HPLC.



Immobilized human MCP1 His at 2 µg/mL can bind Anti-CCL2 / MCP1 Reference Antibody (carlumab) $EC_{50}=0.02438$ µg/mL