

**Anti-CD38 Reference Antibody (mezagitamab)  
Recombinant Antibody  
Catalog # APR10188****Specification**

---

**Anti-CD38 Reference Antibody (mezagitamab) - Product Information**

Application	FC, E, FTA
Primary Accession	<a href="#">P28907</a>
Reactivity	Cynomolgus, Human, Mouse
Clonality	Monoclonal
Isotype	IgG1
Calculated MW	145 KDa

**Anti-CD38 Reference Antibody (mezagitamab) - Additional Information****Target/Specificity**  
CD38**Endotoxin**  
< 0.001EU/ µg, determined by LAL method.**Conjugation**  
Unconjugated**Expression system**  
CHO Cell**Format**  
Purified monoclonal antibody supplied in PBS, pH6.0, without preservative. This antibody is purified through a protein A column.**Storage**  
-80°C for 2 years under sterile conditions □ -20°C for 1 year under sterile conditions □ Avoid repeated freeze-thaw cycles.**Anti-CD38 Reference Antibody (mezagitamab) - Protein Information****Name** CD38**Function**  
Synthesizes cyclic ADP-ribose (cADPR), a second messenger for glucose-induced insulin secretion (PubMed: [7961800](http://www.uniprot.org/citations/7961800), PubMed: [8253715](http://www.uniprot.org/citations/8253715)). Synthesizes the Ca(2+) mobilizer nicotinate-adenine dinucleotide phosphate, NAADP(+), from 2'-phospho-cADPR and nicotinic acid, as well as from NADP(+) and nicotinic acid. At both pH 5.0 and pH 7.4 preferentially transforms 2'-phospho-cADPR into NAADP(+), while preferentially cleaving NADP(+) to cADPR and ADPRP rather than into NADDP(+) (PubMed: [16690024](http://www.uniprot.org/citations/16690024)). Has cADPR

hydrolase activity (PubMed:<a href="http://www.uniprot.org/citations/7961800" target="\_blank">7961800</a>, PubMed:<a href="http://www.uniprot.org/citations/8253715" target="\_blank">8253715</a>).

#### Cellular Location

Cell surface. Membrane; Single-pass type II membrane protein

#### Tissue Location

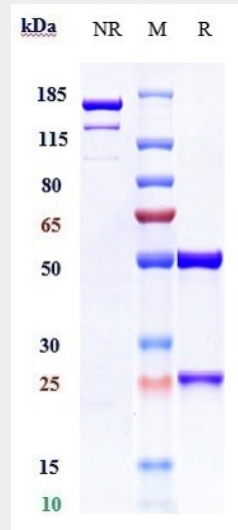
Expressed at high levels in pancreas, liver, kidney, brain, testis, ovary, placenta, malignant lymphoma and neuroblastoma.

### Anti-CD38 Reference Antibody (mezagitamab) - Protocols

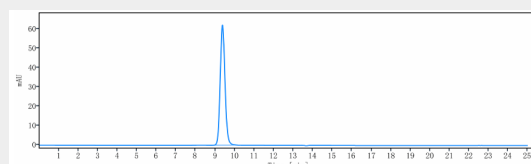
Provided below are standard protocols that you may find useful for product applications.

- [Western Blot](#)
- [Blocking Peptides](#)
- [Dot Blot](#)
- [Immunohistochemistry](#)
- [Immunofluorescence](#)
- [Immunoprecipitation](#)
- [Flow Cytometry](#)
- [Cell Culture](#)

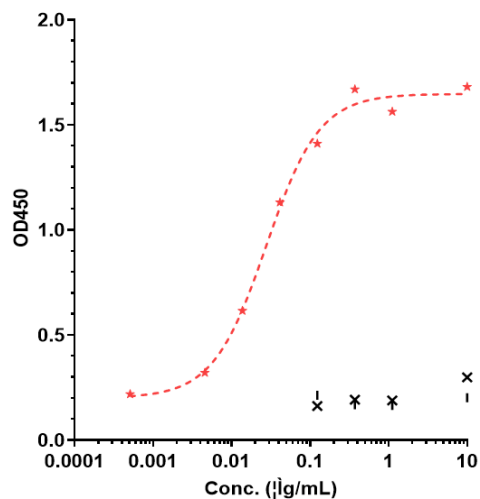
### Anti-CD38 Reference Antibody (mezagitamab) - Images



Anti-CD38 Reference Antibody (mezagitamab) on SDS-PAGE under reducing (R) condition. The gel was stained with Coomassie Blue. The purity of the protein is greater than 95%



The purity of Anti-CD38 Reference Antibody (mezagitamab) is more than 95%, determined by SEC-HPLC.



Immobilized human CD38 NHis at 2 µg/mL can bind Anti-CD38 Reference Antibody (mezagitamab)  $\square$  EC50=0.0275 µg/mL