

**Anti-CD38 Reference Antibody (daratumumab)
Recombinant Antibody
Catalog # APR10187****Specification**

Anti-CD38 Reference Antibody (daratumumab) - Product Information

Application	FC, E, FTA
Primary Accession	P28907
Reactivity	Cynomolgus, Human, Mouse
Clonality	Monoclonal
Isotype	IgG1
Calculated MW	145.26 KDa

Anti-CD38 Reference Antibody (daratumumab) - Additional Information**Target/Specificity**
CD38**Endotoxin**
< 0.001EU/ µg, determined by LAL method.**Conjugation**
Unconjugated**Expression system**
CHO Cell**Format**
Purified monoclonal antibody supplied in PBS, pH6.0, without preservative. This antibody is purified through a protein A column.**Anti-CD38 Reference Antibody (daratumumab) - Protein Information****Name** CD38**Function**
Synthesizes cyclic ADP-ribose (cADPR), a second messenger for glucose-induced insulin secretion (PubMed: [7961800](http://www.uniprot.org/citations/7961800), PubMed: [8253715](http://www.uniprot.org/citations/8253715)). Synthesizes the Ca(2+) mobilizer nicotinate-adenine dinucleotide phosphate, NAADP(+), from 2'-phospho-cADPR and nicotinic acid, as well as from NADP(+) and nicotinic acid. At both pH 5.0 and pH 7.4 preferentially transforms 2'-phospho-cADPR into NAADP(+), while preferentially cleaving NADP(+) to cADPR and ADPRP rather than into NADDP(+) (PubMed: [16690024](http://www.uniprot.org/citations/16690024)). Has cADPR hydrolase activity (PubMed: [7961800](http://www.uniprot.org/citations/7961800), PubMed: [8253715](http://www.uniprot.org/citations/8253715)).

Cellular Location

Cell surface. Membrane; Single-pass type II membrane protein

Tissue Location

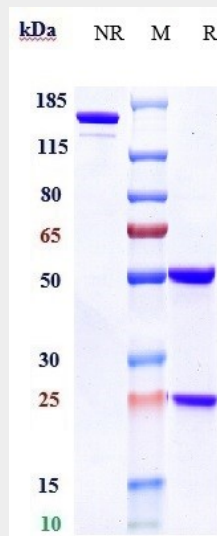
Expressed at high levels in pancreas, liver, kidney, brain, testis, ovary, placenta, malignant lymphoma and neuroblastoma.

Anti-CD38 Reference Antibody (daratumumab) - Protocols

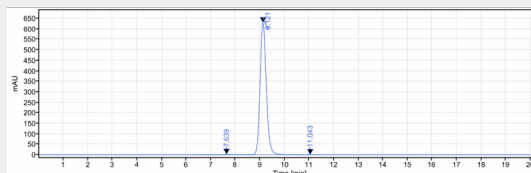
Provided below are standard protocols that you may find useful for product applications.

- [Western Blot](#)
- [Blocking Peptides](#)
- [Dot Blot](#)
- [Immunohistochemistry](#)
- [Immunofluorescence](#)
- [Immunoprecipitation](#)
- [Flow Cytometry](#)
- [Cell Culture](#)

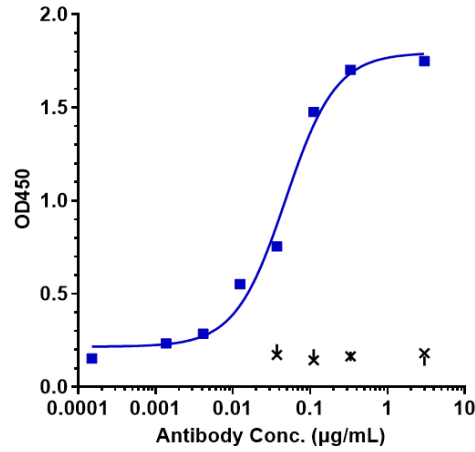
Anti-CD38 Reference Antibody (daratumumab) - Images



Anti-CD38 Reference Antibody (daratumumab) on SDS-PAGE under reducing (R) condition. The gel was stained with Coomassie Blue. The purity of the protein is greater than 95%



The purity of Anti-CD38 Reference Antibody (daratumumab) is more than 98.99% ,determined by SEC-HPLC.



Immobilized human CD38 NHis at 2 µg/mL can bind Anti-CD38 Reference Antibody (daratumumab) $EC_{50}=0.04792$ µg/mL