

**Anti-PDGFR $\alpha$  / CD140a Reference Antibody (olaratumab)  
Recombinant Antibody  
Catalog # APR10171**

**Specification**

---

**Anti-PDGFR $\alpha$  / CD140a Reference Antibody (olaratumab) - Product Information**

Application	FC, E, FTA
Primary Accession	<a href="#">P16234</a>
Reactivity	Human, Mouse
Clonality	Monoclonal
Isotype	IgG1
Calculated MW	147.12 KDa

**Anti-PDGFR $\alpha$  / CD140a Reference Antibody (olaratumab) - Additional Information**

**Target/Specificity**  
PDGFR $\alpha$  / CD140a

**Endotoxin**  
< 0.001EU/  $\mu$ g, determined by LAL method.

**Conjugation**  
Unconjugated

**Expression system**  
CHO Cell

**Format**  
Purified monoclonal antibody supplied in PBS, pH6.0, without preservative. This antibody is purified through a protein A column.

**Anti-PDGFR $\alpha$  / CD140a Reference Antibody (olaratumab) - Protein Information**

**Name** PDGFR $\alpha$

**Synonyms** PDGFR2, RHEPDGFR $\alpha$

**Function**

Tyrosine-protein kinase that acts as a cell-surface receptor for PDGFA, PDGFB and PDGFC and plays an essential role in the regulation of embryonic development, cell proliferation, survival and chemotaxis. Depending on the context, promotes or inhibits cell proliferation and cell migration. Plays an important role in the differentiation of bone marrow-derived mesenchymal stem cells. Required for normal skeleton development and cephalic closure during embryonic development. Required for normal development of the mucosa lining the gastrointestinal tract, and for recruitment of mesenchymal cells and normal development of intestinal villi. Plays a role in cell migration and chemotaxis in wound healing. Plays a role in platelet activation, secretion of agonists from platelet granules, and in thrombin-induced platelet aggregation. Binding of its cognate ligands - homodimeric PDGFA, homodimeric PDGFB, heterodimers formed by PDGFA and

PDGFB or homodimeric PDGFC -leads to the activation of several signaling cascades; the response depends on the nature of the bound ligand and is modulated by the formation of heterodimers between PDGFRA and PDGFRB. Phosphorylates PIK3R1, PLCG1, and PTPN11. Activation of PLCG1 leads to the production of the cellular signaling molecules diacylglycerol and inositol 1,4,5-trisphosphate, mobilization of cytosolic Ca(2+) and the activation of protein kinase C. Phosphorylates PIK3R1, the regulatory subunit of phosphatidylinositol 3-kinase, and thereby mediates activation of the AKT1 signaling pathway. Mediates activation of HRAS and of the MAP kinases MAPK1/ERK2 and/or MAPK3/ERK1. Promotes activation of STAT family members STAT1, STAT3 and STAT5A and/or STAT5B. Receptor signaling is down-regulated by protein phosphatases that dephosphorylate the receptor and its down-stream effectors, and by rapid internalization of the activated receptor.

#### Cellular Location

Cell membrane; Single-pass type I membrane protein. Cell projection, cilium {ECO:0000250|UniProtKB:P26618}. Golgi apparatus {ECO:0000250|UniProtKB:P26618}

#### Tissue Location

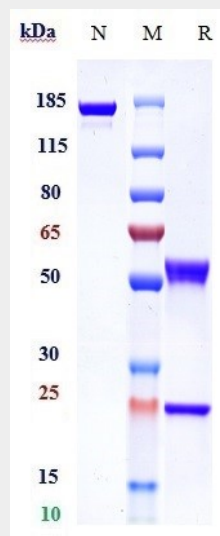
Detected in platelets (at protein level). Widely expressed. Detected in brain, fibroblasts, smooth muscle, heart, and embryo. Expressed in primary and metastatic colon tumors and in normal colon tissue.

### Anti-PDGFR $\alpha$ / CD140a Reference Antibody (olaratumab) - Protocols

Provided below are standard protocols that you may find useful for product applications.

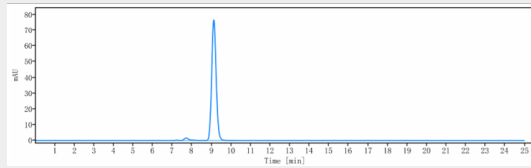
- [Western Blot](#)
- [Blocking Peptides](#)
- [Dot Blot](#)
- [Immunohistochemistry](#)
- [Immunofluorescence](#)
- [Immunoprecipitation](#)
- [Flow Cytometry](#)
- [Cell Culture](#)

### Anti-PDGFR $\alpha$ / CD140a Reference Antibody (olaratumab) - Images

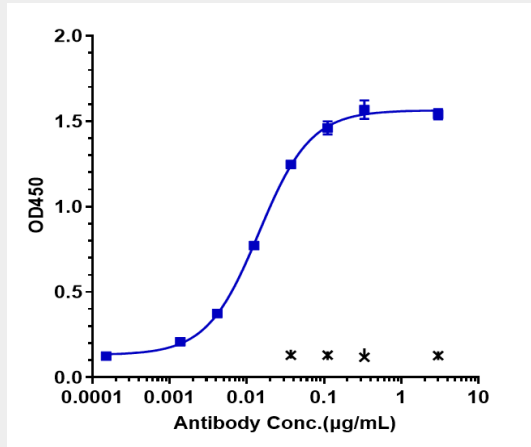


Anti-PDGFR $\alpha$  / CD140a Reference Antibody (olaratumab) on SDS-PAGE under reducing (R)

condition. The gel was stained with Coomassie Blue. The purity of the protein is greater than 95%



The purity of Anti-PDGFR $\alpha$  / CD140a Reference Antibody (olaratumab) is more than 95%, determined by SEC-HPLC.



Immobilized human PDGFR $\alpha$  / CD140a, Fc Tag at 2 µg/mL can bind Anti-PDGFR $\alpha$  / CD140a Reference Antibody (olaratumab)  $\square$  EC<sub>50</sub>=0.0143 µg/mL