

**Anti-PDCD1 / PD-1 / CD279 Reference Antibody (camrelizumab)
Recombinant Antibody
Catalog # APR10169****Specification**

Anti-PDCD1 / PD-1 / CD279 Reference Antibody (camrelizumab) - Product Information

Application	FC, E, FTA
Primary Accession	O15116
Reactivity	Cynomolgus, Human
Clonality	Monoclonal
Isotype	IgG4SP
Calculated MW	145.76 KDa

Anti-PDCD1 / PD-1 / CD279 Reference Antibody (camrelizumab) - Additional Information**Target/Specificity**
PDCD1 / PD-1 / CD279**Endotoxin**
< 0.001EU/ µg,determined by LAL method.**Conjugation**
Unconjugated**Expression system**
CHO Cell**Format**
Purified monoclonal antibody supplied in PBS, pH6.0, without preservative.This antibody is purified through a protein A column.**Anti-PDCD1 / PD-1 / CD279 Reference Antibody (camrelizumab) - Protein Information****Name** PDCD1 {ECO:0000303|PubMed:7851902, ECO:0000312|HGNC:HGNC:8760}**Function**
Inhibitory receptor on antigen activated T-cells that plays a critical role in induction and maintenance of immune tolerance to self (PubMed:21276005). Delivers inhibitory signals upon binding to ligands CD274/PDCD1L1 and CD273/PDCD1LG2 (PubMed:21276005). Following T-cell receptor (TCR) engagement, PDCD1 associates with CD3-TCR in the immunological synapse and directly inhibits T-cell activation (By similarity). Suppresses T-cell activation through the recruitment of PTPN11/SHP-2: following ligand-binding, PDCD1 is phosphorylated within the ITSM motif, leading to the recruitment of the protein tyrosine phosphatase PTPN11/SHP-2 that mediates dephosphorylation of key TCR proximal signaling molecules, such as ZAP70, PRKCQ/PKtheta and CD247/CD3zeta (By similarity).

Cellular Location

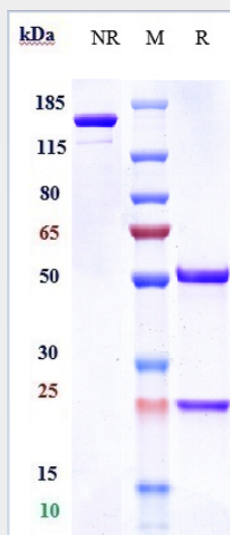
Cell membrane; Single-pass type I membrane protein

Anti-PDCD1 / PD-1 / CD279 Reference Antibody (camrelizumab) - Protocols

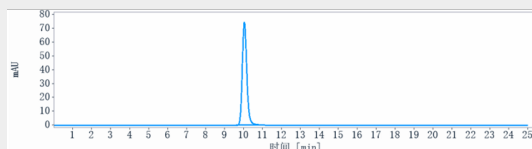
Provided below are standard protocols that you may find useful for product applications.

- [Western Blot](#)
- [Blocking Peptides](#)
- [Dot Blot](#)
- [Immunohistochemistry](#)
- [Immunofluorescence](#)
- [Immunoprecipitation](#)
- [Flow Cytometry](#)
- [Cell Culture](#)

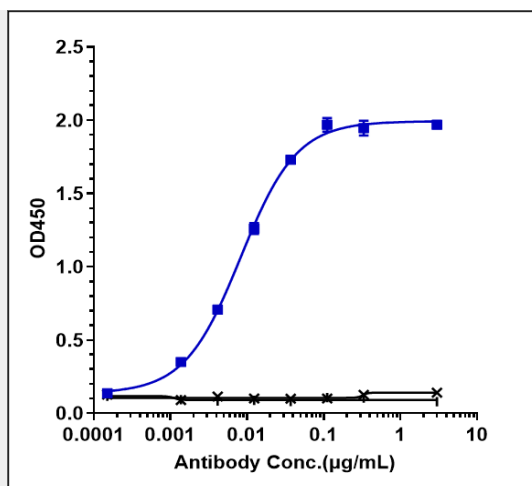
Anti-PDCD1 / PD-1 / CD279 Reference Antibody (camrelizumab) - Images



Anti-PDCD1 / PD-1 / CD279 Reference Antibody (camrelizumab) on SDS-PAGE under reducing (R) condition. The gel was stained with Coomassie Blue. The purity of the protein is greater than 95%



The purity of Anti-PDCD1 / PD-1 / CD279 Reference Antibody (camrelizumab) is more than 100%, determined by SEC-HPLC.



Immobilized human PD 1 His at 2 µg/mL can bind Anti-PDCD1 / PD-1 / CD279 Reference Antibody (camrelizumab) □ EC50=0.008247 µg/mL