

**Anti-IL-1a & IL1b Reference Antibody (Lutikizumab)**  
**Recombinant Antibody**  
**Catalog # APR10160**

**Specification**

---

**Anti-IL-1a & IL1b Reference Antibody (Lutikizumab) - Product Information**

Application	FC, E, FTA
Primary Accession	<a href="#">P01583 &amp; P01584</a>
Reactivity	Cynomolgus, Human, Mouse
Clonality	Monoclonal
Isotype	IgG1
Calculated MW	196.8 KDa

**Anti-IL-1a & IL1b Reference Antibody (Lutikizumab) - Additional Information**

**Target/Specificity**

IL-1a & IL1b

**Endotoxin**

< 0.001EU/ µg, determined by LAL method.

**Conjugation**

Unconjugated

**Expression system**

CHO Cell

**Format**

Purified monoclonal antibody supplied in PBS, pH6.0, without preservative. This antibody is purified through a protein A column.

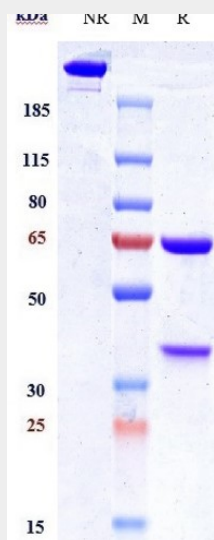
**Anti-IL-1a & IL1b Reference Antibody (Lutikizumab) - Protein Information**

**Anti-IL-1a & IL1b Reference Antibody (Lutikizumab) - Protocols**

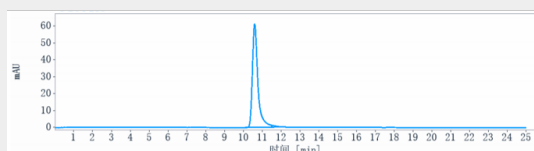
Provided below are standard protocols that you may find useful for product applications.

- [Western Blot](#)
- [Blocking Peptides](#)
- [Dot Blot](#)
- [Immunohistochemistry](#)
- [Immunofluorescence](#)
- [Immunoprecipitation](#)
- [Flow Cytometry](#)
- [Cell Culture](#)

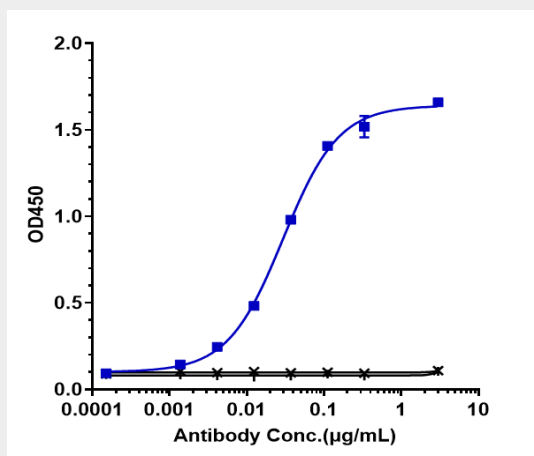
**Anti-IL-1a & IL1b Reference Antibody (Lutikizumab) - Images**



Anti-IL-1a & IL1b Reference Antibody (Lutikizumab) on SDS-PAGE under reducing (R) condition. The gel was stained with Coomassie Blue. The purity of the protein is greater than 95%



The purity of Anti-IL-1a & IL1b Reference Antibody (Lutikizumab) is more than 98.44%, determined by SEC-HPLC.



Immobilized human IL 1a, Fc at 2 µg/mL can bind Anti-IL-1a & IL1b Reference Antibody (Lutikizumab)  $EC_{50}=0.0294$  µg/mL