

**Anti-IFN α 1 Reference Antibody (sifalimumab)
Recombinant Antibody
Catalog # APR10157**

Specification

Anti-IFN α 1 Reference Antibody (sifalimumab) - Product Information

Application	FC, E, FTA
Primary Accession	P01562
Reactivity	Cynomolgus, Human
Clonality	Monoclonal
Isotype	IgG1
Calculated MW	144.24 KDa

Anti-IFN α 1 Reference Antibody (sifalimumab) - Additional Information

Target/Specificity
IFN α 1

Endotoxin
< 0.001EU/ μ g,determined by LAL method.

Conjugation
Unconjugated

Expression system
CHO Cell

Format
Purified monoclonal antibody supplied in PBS, pH6.0, without preservative.This antibody is purified through a protein A column.

Anti-IFN α 1 Reference Antibody (sifalimumab) - Protein Information

Name IFN α 1

Function
Produced by macrophages, IFN-alpha have antiviral activities. Interferon stimulates the production of two enzymes: a protein kinase and an oligoadenylate synthetase.

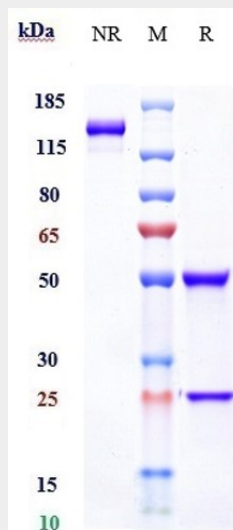
Cellular Location
Secreted.

Anti-IFN α 1 Reference Antibody (sifalimumab) - Protocols

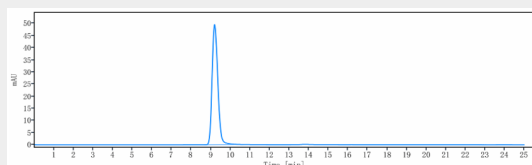
Provided below are standard protocols that you may find useful for product applications.

- [Western Blot](#)
- [Blocking Peptides](#)
- [Dot Blot](#)
- [Immunohistochemistry](#)
- [Immunofluorescence](#)
- [Immunoprecipitation](#)
- [Flow Cytometry](#)
- [Cell Culture](#)

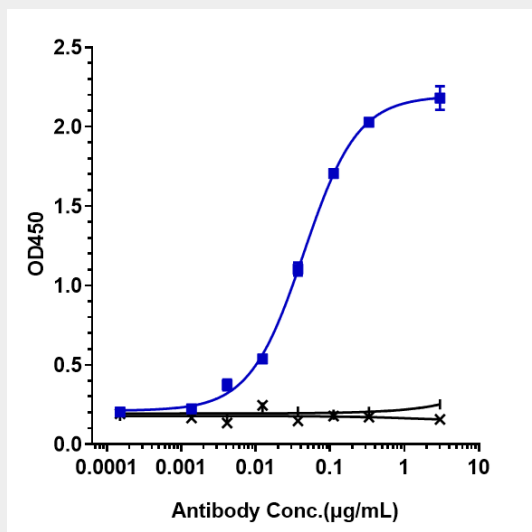
Anti-IFN α 1 Reference Antibody (sifalimumab) - Images



Anti-IFN α 1 Reference Antibody (sifalimumab) on SDS-PAGE under reducing (R) condition. The gel was stained with Coomassie Blue. The purity of the protein is greater than 95%



The purity of Anti-IFN α 1 Reference Antibody (sifalimumab) is more than 100% ,determined by SEC-HPLC.



Immobilized human IFN α 1, Fc tag at 2 μ g/mL can bind Anti-IFN α 1 Reference Antibody (sifalimumab) \square EC50=0.04414 μ g/mL