

**Anti-ERBB3 / HER3 Reference Antibody (barecetamab)
Recombinant Antibody
Catalog # APR10156****Specification**

Anti-ERBB3 / HER3 Reference Antibody (barecetamab) - Product Information

Application	FC, E, FTA
Primary Accession	P21860
Reactivity	Human
Clonality	Monoclonal
Isotype	IgG1
Calculated MW	143.9 KDa

Anti-ERBB3 / HER3 Reference Antibody (barecetamab) - Additional Information**Target/Specificity**

ERBB3 / HER3

Endotoxin

< 0.001EU/ µg,determined by LAL method.

Conjugation

Unconjugated

Expression system

CHO Cell

Format

Purified monoclonal antibody supplied in PBS, pH6.0, without preservative.This antibody is purified through a protein A column.

Anti-ERBB3 / HER3 Reference Antibody (barecetamab) - Protein Information**Name** ERBB3**Synonyms** HER3**Function**

Tyrosine-protein kinase that plays an essential role as cell surface receptor for neuregulins. Binds to neuregulin-1 (NRG1) and is activated by it; ligand-binding increases phosphorylation on tyrosine residues and promotes its association with the p85 subunit of phosphatidylinositol 3-kinase (PubMed:20682778). May also be activated by CSPG5 (PubMed:15358134). Involved in the regulation of myeloid cell differentiation (PubMed:27416908).

Cellular Location

[Isoform 1]: Cell membrane; Single-pass type I membrane protein

Tissue Location

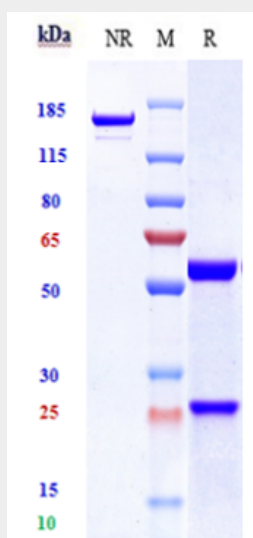
Epithelial tissues and brain.

Anti-ERBB3 / HER3 Reference Antibody (barecetamab) - Protocols

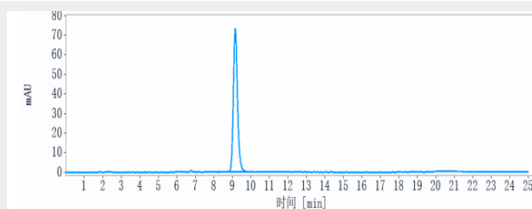
Provided below are standard protocols that you may find useful for product applications.

- [Western Blot](#)
- [Blocking Peptides](#)
- [Dot Blot](#)
- [Immunohistochemistry](#)
- [Immunofluorescence](#)
- [Immunoprecipitation](#)

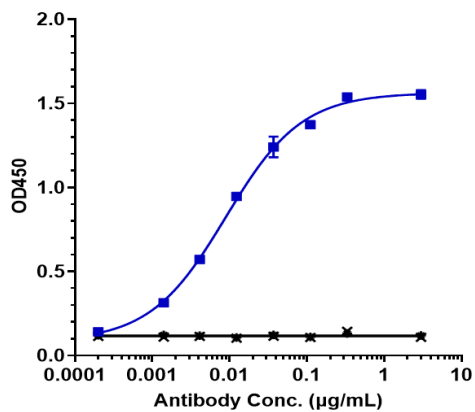
Anti-ERBB3 / HER3 Reference Antibody (barecetamab) - Images



Anti-ERBB3 / HER3 Reference Antibody (barecetamab) on SDS-PAGE under reducing (R) condition. The gel was stained with Coomassie Blue. The purity of the protein is greater than 95%



The purity of Anti-ERBB3 / HER3 Reference Antibody (barecetamab) is more than 95%, determined by SEC-HPLC.



Immobilized human HER3 His at 2 µg/mL can bind Anti-ERBB3 / HER3 Reference Antibody (barecetamab) $EC_{50}=0.00893$ µg/mL