

**Anti-FOLH1 / PSMA Reference Antibody (rosopatamab)
Recombinant Antibody
Catalog # APR10152**

Specification

Anti-FOLH1 / PSMA Reference Antibody (rosopatamab) - Product Information

Application	FC, E, FTA
Primary Accession	Q04609
Clonality	Monoclonal
Isotype	IgG1
Calculated MW	144.36 KDa

Anti-FOLH1 / PSMA Reference Antibody (rosopatamab) - Additional Information

Target/Specificity
FOLH1 / PSMA

Endotoxin
< 0.001EU/ µg,determined by LAL method.

Conjugation
Unconjugated

Expression system
CHO Cell

Format
Purified monoclonal antibody supplied in PBS, pH6.0, without preservative.This antibody is purified through a protein A column.

Anti-FOLH1 / PSMA Reference Antibody (rosopatamab) - Protein Information

Name FOLH1 ([HGNC:3788](#))

Synonyms FOLH, NAALAD1, PSM, PSMA

Function
Has both folate hydrolase and N-acetylated-alpha-linked- acidic dipeptidase (NAALADase) activity. Has a preference for tri- alpha-glutamate peptides. In the intestine, required for the uptake of folate. In the brain, modulates excitatory neurotransmission through the hydrolysis of the neuropeptide, N-aceylaspartylglutamate (NAAG), thereby releasing glutamate. Involved in prostate tumor progression.

Cellular Location
Cell membrane; Single-pass type II membrane protein

Tissue Location
Highly expressed in prostate epithelium. Detected in urinary bladder, kidney, testis, ovary,

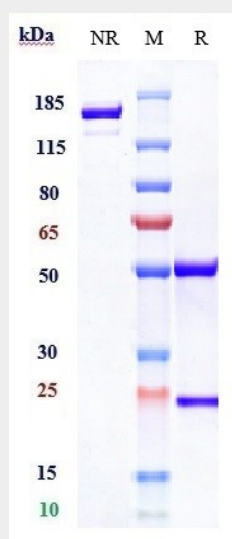
fallopian tube, breast, adrenal gland, liver, esophagus, stomach, small intestine, colon and brain (at protein level). Detected in the small intestine, brain, kidney, liver, spleen, colon, trachea, spinal cord and the capillary endothelium of a variety of tumors. Expressed specifically in jejunum brush border membranes. In the brain, highly expressed in the ventral striatum and brain stem. Also expressed in fetal liver and kidney Isoform PSMA' is the most abundant form in normal prostate. Isoform PSMA-1 is the most abundant form in primary prostate tumors. Isoform PSMA-9 is specifically expressed in prostate cancer

Anti-FOLH1 / PSMA Reference Antibody (rosopatamab) - Protocols

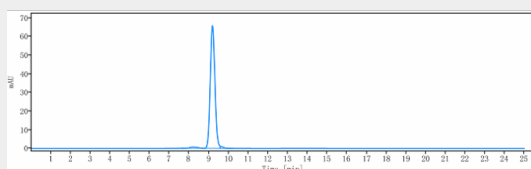
Provided below are standard protocols that you may find useful for product applications.

- [Western Blot](#)
- [Blocking Peptides](#)
- [Dot Blot](#)
- [Immunohistochemistry](#)
- [Immunofluorescence](#)
- [Immunoprecipitation](#)
- [Flow Cytometry](#)
- [Cell Culture](#)

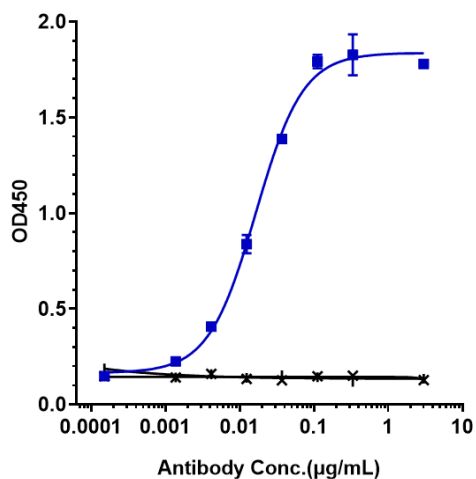
Anti-FOLH1 / PSMA Reference Antibody (rosopatamab) - Images



Anti-FOLH1 / PSMA Reference Antibody (rosopatamab) on SDS-PAGE under reducing (R) condition. The gel was stained with Coomassie Blue. The purity of the protein is greater than 95%



The purity of Anti-FOLH1 / PSMA Reference Antibody (rosopatamab) is more than 97.15%, determined by SEC-HPLC.



Immobilized human FOLH1/PSMA-FC Tag at 2 µg/mL can bind Anti-FOLH1 / PSMA Reference Antibody (rosopatamab) $EC_{50}=0.01643$ µg/mL