

**Anti-CD3e Reference Antibody (teplizumab)
Recombinant Antibody
Catalog # APR10139****Specification**

Anti-CD3e Reference Antibody (teplizumab) - Product Information

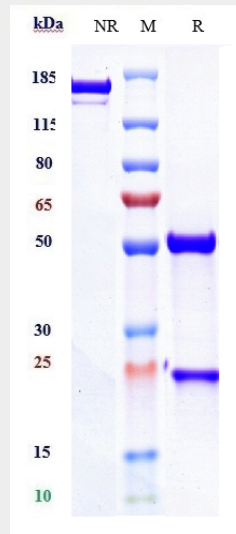
| | |
|-------------------|------------------------|
| Application | FC, E, FTA |
| Primary Accession | P07766 |
| Reactivity | Human |
| Clonality | Monoclonal |
| Isotype | IgG1 |
| Calculated MW | 150 KDa |

Anti-CD3e Reference Antibody (teplizumab) - Additional Information**Target/Specificity**
CD3e**Endotoxin**
< 0.001EU/ µg, determined by LAL method.**Conjugation**
Unconjugated**Expression system**
CHO Cell**Format**
Purified monoclonal antibody supplied in PBS, pH6.0, without preservative. This antibody is purified through a protein A column.**Anti-CD3e Reference Antibody (teplizumab) - Protein Information****Anti-CD3e Reference Antibody (teplizumab) - Protocols**

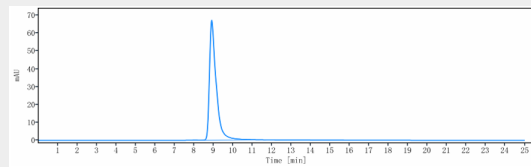
Provided below are standard protocols that you may find useful for product applications.

- [Western Blot](#)
- [Blocking Peptides](#)
- [Dot Blot](#)
- [Immunohistochemistry](#)
- [Immunofluorescence](#)
- [Immunoprecipitation](#)
- [Flow Cytometry](#)
- [Cell Culture](#)

Anti-CD3e Reference Antibody (teplizumab) - Images



Anti-CD3e Reference Antibody (teplizumab) on SDS-PAGE under reducing (R) condition. The gel was stained with Coomassie Blue. The purity of the protein is greater than 95%



The purity of Anti-CD3e Reference Antibody (teplizumab) is more than 100% ,determined by SEC-HPLC.