

**Anti-CD14 Reference Antibody (atibuclimab)
Recombinant Antibody
Catalog # APR10134****Specification**

Anti-CD14 Reference Antibody (atibuclimab) - Product Information

Application	FC, E, FTA
Primary Accession	P08571
Reactivity	Human
Clonality	Monoclonal
Isotype	IgG4SP
Calculated MW	145.3 KDa

Anti-CD14 Reference Antibody (atibuclimab) - Additional Information**Target/Specificity**
CD14**Endotoxin**
< 0.001EU/ µg, determined by LAL method.**Conjugation**
Unconjugated**Expression system**
CHO Cell**Format**
Purified monoclonal antibody supplied in PBS, pH6.0, without preservative. This antibody is purified through a protein A column.**Anti-CD14 Reference Antibody (atibuclimab) - Protein Information****Name** CD14**Function**
Coreceptor for bacterial lipopolysaccharide (PubMed: [1698311](http://www.uniprot.org/citations/1698311), PubMed: [23264655](http://www.uniprot.org/citations/23264655)). In concert with LBP, binds to monomeric lipopolysaccharide and delivers it to the LY96/TLR4 complex, thereby mediating the innate immune response to bacterial lipopolysaccharide (LPS) (PubMed: [20133493](http://www.uniprot.org/citations/20133493), PubMed: [22265692](http://www.uniprot.org/citations/22265692), PubMed: [23264655](http://www.uniprot.org/citations/23264655)). Acts via MyD88, TIRAP and TRAF6, leading to NF-kappa-B activation, cytokine secretion and the inflammatory response (PubMed: [8612135](http://www.uniprot.org/citations/8612135)). Acts as a coreceptor for TLR2:TLR6 heterodimer in response to diacylated lipopeptides and for TLR2:TLR1 heterodimer in response to triacylated lipopeptides,

these clusters trigger signaling from the cell surface and subsequently are targeted to the Golgi in a lipid-raft dependent pathway (PubMed:16880211). Binds electronegative LDL (LDL(-)) and mediates the cytokine release induced by LDL(-) (PubMed:23880187).

Cellular Location

Cell membrane; Lipid-anchor, GPI-anchor. Secreted. Membrane raft. Golgi apparatus.
Note=Secreted forms may arise by cleavage of the GPI anchor.

Tissue Location

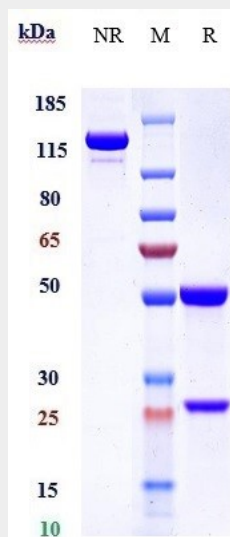
Detected on macrophages (at protein level) (PubMed:1698311). Expressed strongly on the surface of monocytes and weakly on the surface of granulocytes; also expressed by most tissue macrophages.

Anti-CD14 Reference Antibody (atibuclimab) - Protocols

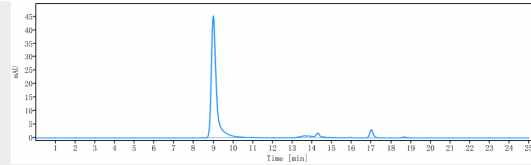
Provided below are standard protocols that you may find useful for product applications.

- [Western Blot](#)
- [Blocking Peptides](#)
- [Dot Blot](#)
- [Immunohistochemistry](#)
- [Immunofluorescence](#)
- [Immunoprecipitation](#)
- [Flow Cytometry](#)
- [Cell Culture](#)

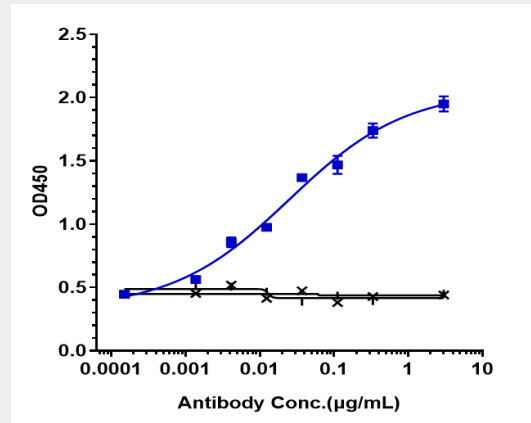
Anti-CD14 Reference Antibody (atibuclimab) - Images



Anti-CD14 Reference Antibody (atibuclimab) on SDS-PAGE under reducing (R) condition. The gel was stained with Coomassie Blue. The purity of the protein is greater than 95%



The purity of Anti-CD14 Reference Antibody (atibuclimab) is more than 95% ,determined by SEC-HPLC.



Immobilized human CD14, Fc tag at 2 µg/mL can bind Anti-CD14 Reference Antibody (atibuclimab) □ EC50=0.0249 µg/mL