

**Anti-GUCY2C Reference Antibody (indusatumab)
Recombinant Antibody
Catalog # APR10120****Specification**

Anti-GUCY2C Reference Antibody (indusatumab) - Product Information

Application	FC, E, FTA
Primary Accession	P25092
Reactivity	Rat, Pig, Cynomolgus, Human
Clonality	Monoclonal
Isotype	IgG1
Calculated MW	145.18 KDa

Anti-GUCY2C Reference Antibody (indusatumab) - Additional Information**Target/Specificity**
GUCY2C**Endotoxin**
< 0.001EU/ µg, determined by LAL method.**Conjugation**
Unconjugated**Expression system**
CHO Cell**Format**
Purified monoclonal antibody supplied in PBS, pH6.0, without preservative. This antibody is purified through a protein A column.**Anti-GUCY2C Reference Antibody (indusatumab) - Protein Information****Name** GUCY2C {ECO:0000303|PubMed:22521417, ECO:0000312|HGNC:HGNC:4688}**Function**

Guanylyl cyclase that catalyzes synthesis of cyclic GMP (cGMP) from GTP (PubMed: [11950846](http://www.uniprot.org/citations/11950846), PubMed: [1718270](http://www.uniprot.org/citations/1718270), PubMed: [22436048](http://www.uniprot.org/citations/22436048), PubMed: [22521417](http://www.uniprot.org/citations/22521417), PubMed: [23269669](http://www.uniprot.org/citations/23269669)). Receptor for the E.coli heat-stable enterotoxin; E.coli enterotoxin markedly stimulates the accumulation of cGMP in mammalian cells expressing GUCY2C (PubMed: [1680854](http://www.uniprot.org/citations/1680854), PubMed: [1718270](http://www.uniprot.org/citations/1718270)). Also activated by the endogenous peptides guanylin and uroguanylin (PubMed: [8381596](http://www.uniprot.org/citations/8381596)).

Cellular Location

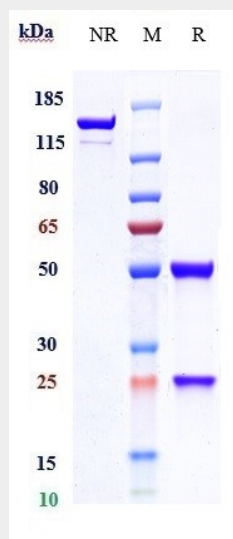
Cell membrane; Single-pass type I membrane protein Endoplasmic reticulum membrane; Single-pass type I membrane protein. Note=The 145 kDa plasma membrane form of GUCY2C contains sialic acid and galactose residues, while a differentially glycosylated 130 Kda form is a high mannose form that is resident in the endoplasmic reticulum and may serve as the precursor for the cell surface form

Anti-GUCY2C Reference Antibody (indusatumab) - Protocols

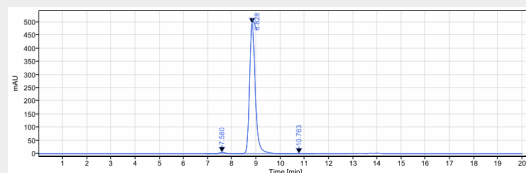
Provided below are standard protocols that you may find useful for product applications.

- [Western Blot](#)
- [Blocking Peptides](#)
- [Dot Blot](#)
- [Immunohistochemistry](#)
- [Immunofluorescence](#)
- [Immunoprecipitation](#)
- [Flow Cytometry](#)
- [Cell Culture](#)

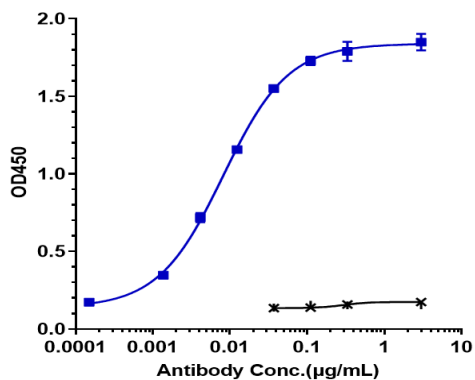
Anti-GUCY2C Reference Antibody (indusatumab) - Images



Anti-GUCY2C Reference Antibody (indusatumab) on SDS-PAGE under reducing (R) condition. The gel was stained with Coomassie Blue. The purity of the protein is greater than 95%



The purity of Anti-GUCY2C Reference Antibody (indusatumab) is more than 98.5% ,determined by SEC-HPLC.



Immobilized human GUCY2C His at 2 µg/mL can bind Anti-GUCY2C Reference Antibody (indusatumab) □ EC₅₀=0.00818 µg/mL