

**Anti-CSF2 / GM-CSF Reference Antibody (namilumab)
Recombinant Antibody
Catalog # APR10119**

Specification

Anti-CSF2 / GM-CSF Reference Antibody (namilumab) - Product Information

Application	FC, E, FTA
Primary Accession	P04141
Reactivity	Cynomolgus, Human
Clonality	Monoclonal
Isotype	IgG1
Calculated MW	145.78 KDa

Anti-CSF2 / GM-CSF Reference Antibody (namilumab) - Additional Information

Target/Specificity
CSF2 / GM-CSF

Endotoxin
< 0.001EU/ µg,determined by LAL method.

Conjugation
Unconjugated

Expression system
CHO Cell

Format
Purified monoclonal antibody supplied in PBS, pH6.0, without preservative.This antibody is purified through a protein A column.

Storage
-80°C for 2 years under sterile conditions □ -20°C for 1 year under sterile conditions □ Avoid repeated freeze-thaw cycles.

Anti-CSF2 / GM-CSF Reference Antibody (namilumab) - Protein Information

Name CSF2

Synonyms GMCSF

Function
Cytokine that stimulates the growth and differentiation of hematopoietic precursor cells from various lineages, including granulocytes, macrophages, eosinophils and erythrocytes.

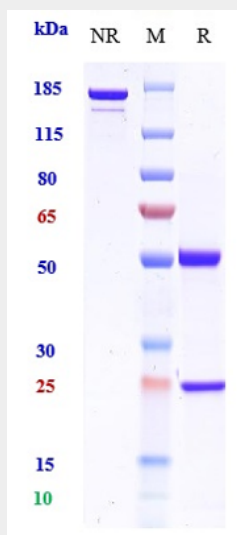
Cellular Location
Secreted

Anti-CSF2 / GM-CSF Reference Antibody (namilumab) - Protocols

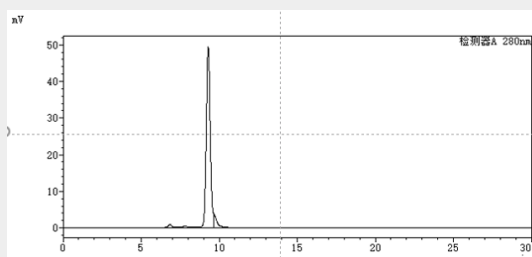
Provided below are standard protocols that you may find useful for product applications.

- [Western Blot](#)
- [Blocking Peptides](#)
- [Dot Blot](#)
- [Immunohistochemistry](#)
- [Immunofluorescence](#)
- [Immunoprecipitation](#)
- [Flow Cytometry](#)
- [Cell Culture](#)

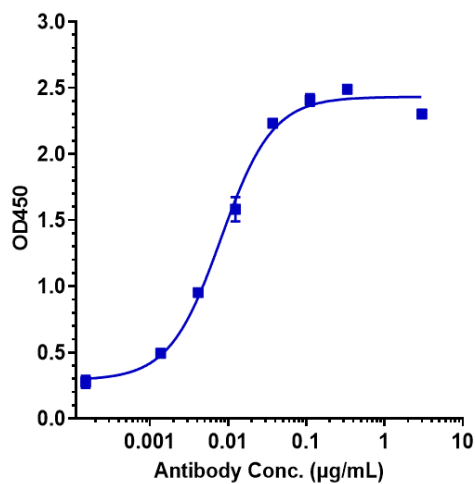
Anti-CSF2 / GM-CSF Reference Antibody (namilumab) - Images



Anti-CSF2 / GM-CSF Reference Antibody (namilumab) on SDS-PAGE under reducing (R) condition. The gel was stained with Coomassie Blue. The purity of the protein is greater than 90%



The purity of Anti-CSF2 / GM-CSF Reference Antibody (namilumab) is more than 90.29%, determined by SEC-HPLC.



Immobilized human GM CSF Nhis at 2 µg/mL can bind Anti-CSF2 / GM-CSF Reference Antibody (namilumab) $EC_{50}=0.008074$ µg/mL