

**Anti-CSF2 / GM-CSF Reference Antibody (lenzilumab)  
Recombinant Antibody  
Catalog # APR10118**

**Specification**

---

**Anti-CSF2 / GM-CSF Reference Antibody (lenzilumab) - Product Information**

|                   |                        |
|-------------------|------------------------|
| Application       | FC, E, FTA             |
| Primary Accession | <a href="#">P04141</a> |
| Reactivity        | Human                  |
| Clonality         | Monoclonal             |
| Isotype           | IgG1                   |
| Calculated MW     | 145 KDa                |

**Anti-CSF2 / GM-CSF Reference Antibody (lenzilumab) - Additional Information**

**Target/Specificity**  
CSF2 / GM-CSF

**Endotoxin**  
< 0.001EU/ µg,determined by LAL method.

**Conjugation**  
Unconjugated

**Expression system**  
CHO Cell

**Format**  
Purified monoclonal antibody supplied in PBS, pH6.0, without preservative.This antibody is purified through a protein A column.

**Anti-CSF2 / GM-CSF Reference Antibody (lenzilumab) - Protein Information**

**Name** CSF2

**Synonyms** GMCSF

**Function**  
Cytokine that stimulates the growth and differentiation of hematopoietic precursor cells from various lineages, including granulocytes, macrophages, eosinophils and erythrocytes.

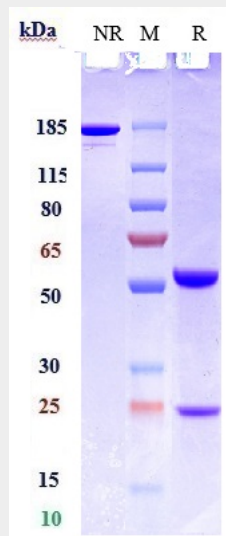
**Cellular Location**  
Secreted

**Anti-CSF2 / GM-CSF Reference Antibody (lenzilumab) - Protocols**

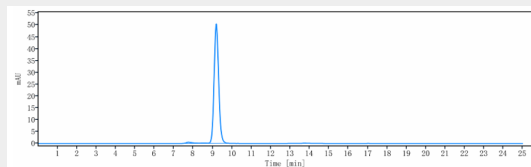
Provided below are standard protocols that you may find useful for product applications.

- [Western Blot](#)
- [Blocking Peptides](#)
- [Dot Blot](#)
- [Immunohistochemistry](#)
- [Immunofluorescence](#)
- [Immunoprecipitation](#)
- [Flow Cytometry](#)
- [Cell Culture](#)

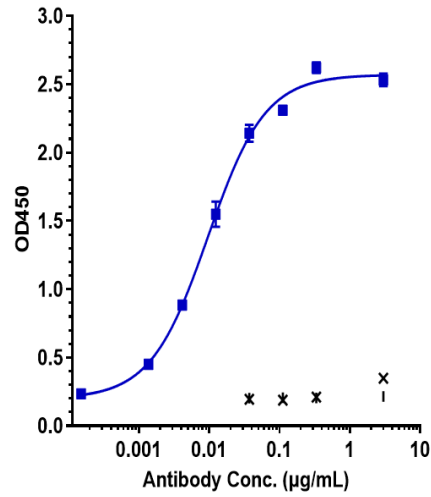
### Anti-CSF2 / GM-CSF Reference Antibody (lenzilumab) - Images



Anti-CSF2 / GM-CSF Reference Antibody (lenzilumab) on SDS-PAGE under reducing (R) condition. The gel was stained with Coomassie Blue. The purity of the protein is greater than 90%



The purity of Anti-CSF2 / GM-CSF Reference Antibody (lenzilumab) is more than 95% ,determined by SEC-HPLC.



Immobilized human GM CSF Nhis at 2 µg/mL can bind Anti-CSF2 / GM-CSF Reference Antibody (lenzilumab) □ EC50=0.009573 µg/mL