

**Anti-Complement C5 Reference Antibody (eculizumab)  
Recombinant Antibody  
Catalog # APR10107****Specification**

---

**Anti-Complement C5 Reference Antibody (eculizumab) - Product Information**

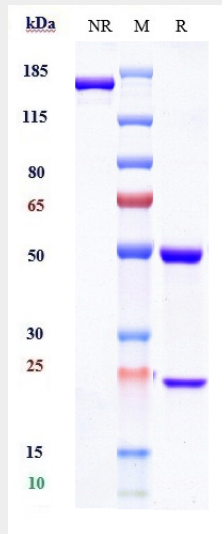
Application	FC, E, FTA
Primary Accession	<a href="#">P01031</a>
Reactivity	Human, Mouse
Clonality	Monoclonal
Isotype	IgG1
Calculated MW	145.74 KDa

**Anti-Complement C5 Reference Antibody (eculizumab) - Additional Information****Target/Specificity**  
Complement C5**Endotoxin**  
< 0.001EU/ µg,determined by LAL method.**Conjugation**  
Unconjugated**Expression system**  
CHO Cell**Format**  
Purified monoclonal antibody supplied in PBS, pH6.0, without preservative.This antibody is purified through a protein A column.**Anti-Complement C5 Reference Antibody (eculizumab) - Protein Information****Name** C5**Synonyms** CPAMD4**Function**  
Activation of C5 by a C5 convertase initiates the spontaneous assembly of the late complement components, C5-C9, into the membrane attack complex. C5b has a transient binding site for C6. The C5b-C6 complex is the foundation upon which the lytic complex is assembled.**Cellular Location**  
Secreted.**Anti-Complement C5 Reference Antibody (eculizumab) - Protocols**

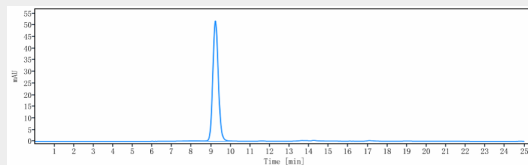
Provided below are standard protocols that you may find useful for product applications.

- [Western Blot](#)
- [Blocking Peptides](#)
- [Dot Blot](#)
- [Immunohistochemistry](#)
- [Immunofluorescence](#)
- [Immunoprecipitation](#)
- [Flow Cytometry](#)
- [Cell Culture](#)

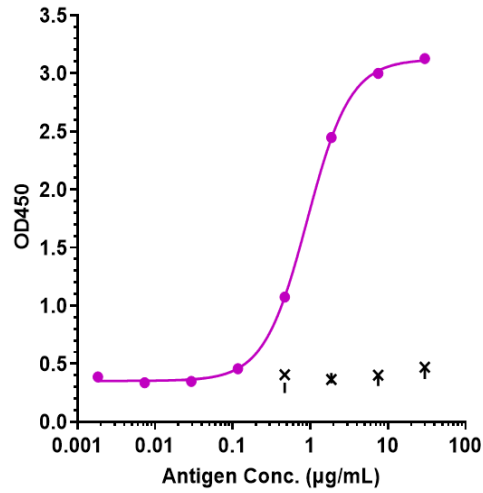
### Anti-Complement C5 Reference Antibody (eculizumab) - Images



Anti-Complement C5 Reference Antibody (eculizumab) on SDS-PAGE under reducing (R) condition. The gel was stained with Coomassie Blue. The purity of the protein is greater than 95%



The purity of Anti-Complement C5 Reference Antibody (eculizumab) is more than 98.7%, determined by SEC-HPLC.



Immobilized human CO5 His at 2 µg/mL can bind Anti-Complement C5 Reference Antibody (eculizumab)  $EC_{50}=0.9163$  µg/mL