

**Anti-CEACAM5 / CEA / CD66e Reference Antibody (tusamitamab-MMAE)
Recombinant Antibody
Catalog # APR10103**

Specification

Anti-CEACAM5 / CEA / CD66e Reference Antibody (tusamitamab-MMAE) - Product Information

Application	FC, E, FTA
Primary Accession	P06731
Reactivity	Human
Clonality	Monoclonal
Isotype	IgG1
Calculated MW	145 KDa

Anti-CEACAM5 / CEA / CD66e Reference Antibody (tusamitamab-MMAE) - Additional Information

Target/Specificity

CEACAM5 / CEA / CD66e

Endotoxin

< 0.001EU/ µg,determined by LAL method.

Conjugation

MMAE

Expression system

CHO Cell

Format

Purified monoclonal antibody supplied in PBS, pH6.0, without preservative.This antibody is purified through a protein A column.

Anti-CEACAM5 / CEA / CD66e Reference Antibody (tusamitamab-MMAE) - Protein Information

Name CEACAM5 ([HGNC:1817](#))

Function

Cell surface glycoprotein that plays a role in cell adhesion, intracellular signaling and tumor progression (PubMed: [10864933](http://www.uniprot.org/citations/10864933), PubMed: [10910050](http://www.uniprot.org/citations/10910050), PubMed: [2803308](http://www.uniprot.org/citations/2803308)). Mediates homophilic and heterophilic cell adhesion with other carcinoembryonic antigen-related cell adhesion molecules, such as CEACAM6 (PubMed: [2803308](http://www.uniprot.org/citations/2803308)). Plays a role as an oncogene by promoting tumor progression; induces resistance to anoikis of colorectal carcinoma cells (PubMed: [10910050](http://www.uniprot.org/citations/10910050))

target="_blank">10910050).

Cellular Location

Cell membrane; Lipid-anchor, GPI-anchor. Apical cell membrane. Cell surface Note=Localized to the apical glycolyx surface

Tissue Location

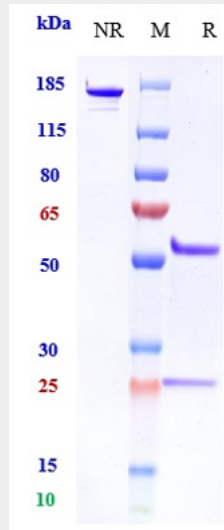
Expressed in columnar epithelial and goblet cells of the colon (at protein level) (PubMed:10436421). Found in adenocarcinomas of endodermally derived digestive system epithelium and fetal colon.

Anti-CEACAM5 / CEA / CD66e Reference Antibody (tusamitamab-MMAE) - Protocols

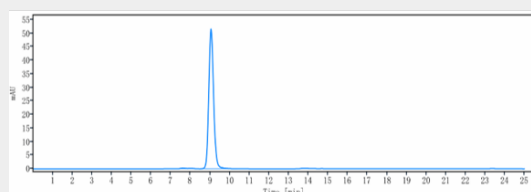
Provided below are standard protocols that you may find useful for product applications.

- [Western Blot](#)
- [Blocking Peptides](#)
- [Dot Blot](#)
- [Immunohistochemistry](#)
- [Immunofluorescence](#)
- [Immunoprecipitation](#)
- [Flow Cytometry](#)
- [Cell Culture](#)

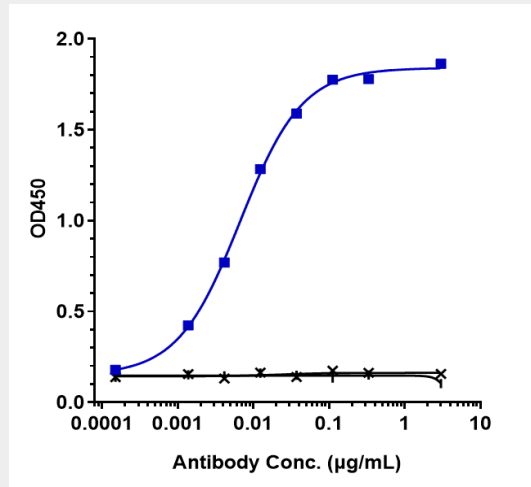
Anti-CEACAM5 / CEA / CD66e Reference Antibody (tusamitamab-MMAE) - Images



Anti-CEACAM5 / CEA / CD66e Reference Antibody (tusamitamab-MMAE) on SDS-PAGE under reducing (R) condition. The gel was stained with Coomassie Blue. The purity of the protein is greater than 90%



The purity of Anti-CEACAM5 / CEA / CD66e Reference Antibody (tusamitamab-MMAE) is more than 95% ,determined by SEC-HPLC.



Immobilized human CEACAM5 His at 2 µg/mL can bind Anti-CEACAM5 / CEA / CD66e Reference Antibody (tusamitamab-MMAE) $EC_{50}=0.00665 \mu\text{g/mL}$