

**Anti-CEACAM5 / CEA / CD66e Reference Antibody (labetuzumab)
Recombinant Antibody
Catalog # APR10100****Specification**

Anti-CEACAM5 / CEA / CD66e Reference Antibody (labetuzumab) - Product Information

Application	FC, E, FTA
Primary Accession	P06731
Reactivity	Human, Mouse
Clonality	Monoclonal
Isotype	IgG1
Calculated MW	145.48 KDa

Anti-CEACAM5 / CEA / CD66e Reference Antibody (labetuzumab) - Additional Information**Target/Specificity**
CEACAM5 / CEA / CD66e**Endotoxin**
< 0.001EU/ µg,determined by LAL method.**Conjugation**
Unconjugated**Expression system**
CHO Cell**Format**
Purified monoclonal antibody supplied in PBS, pH6.0, without preservative.This antibody is purified through a protein A column.**Anti-CEACAM5 / CEA / CD66e Reference Antibody (labetuzumab) - Protein Information****Name** CEACAM5 ([HGNC:1817](#))**Function**
Cell surface glycoprotein that plays a role in cell adhesion, intracellular signaling and tumor progression (PubMed:10864933, PubMed:10910050, PubMed:2803308). Mediates homophilic and heterophilic cell adhesion with other carcinoembryonic antigen-related cell adhesion molecules, such as CEACAM6 (PubMed:2803308). Plays a role as an oncogene by promoting tumor progression; induces resistance to anoikis of colorectal carcinoma cells (PubMed:10910050).**Cellular Location**

Cell membrane; Lipid-anchor, GPI-anchor. Apical cell membrane. Cell surface Note=Localized to the apical glycolyx surface

Tissue Location

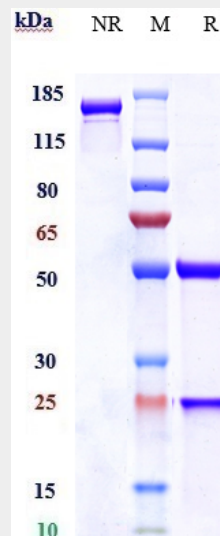
Expressed in columnar epithelial and goblet cells of the colon (at protein level) (PubMed:10436421). Found in adenocarcinomas of endodermally derived digestive system epithelium and fetal colon.

Anti-CEACAM5 / CEA / CD66e Reference Antibody (labetuzumab) - Protocols

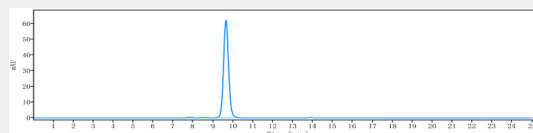
Provided below are standard protocols that you may find useful for product applications.

- [Western Blot](#)
- [Blocking Peptides](#)
- [Dot Blot](#)
- [Immunohistochemistry](#)
- [Immunofluorescence](#)
- [Immunoprecipitation](#)
- [Flow Cytometry](#)
- [Cell Culture](#)

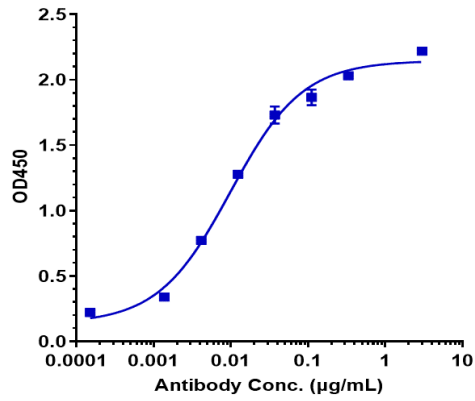
Anti-CEACAM5 / CEA / CD66e Reference Antibody (labetuzumab) - Images



Anti-CEACAM5 / CEA / CD66e Reference Antibody (labetuzumab) on SDS-PAGE under reducing (R) condition. The gel was stained with Coomassie Blue. The purity of the protein is greater than 95%



The purity of Anti-CEACAM5 / CEA / CD66e Reference Antibody (labetuzumab) is more than 98.53% ,determined by SEC-HPLC.



Immobilized human CEACAM5 His Biotin at 2 µg/mL can bind Anti-CEACAM5 / CEA / CD66e Reference Antibody (labetuzumab) $EC_{50}=0.009815$ µg/mL