

**Anti-TNFRSF5 / CD40 Reference Antibody (selicrelumab)  
Recombinant Antibody  
Catalog # APR10095****Specification**

---

**Anti-TNFRSF5 / CD40 Reference Antibody (selicrelumab) - Product Information**

Application	FC, E, FTA
Primary Accession	<a href="#">P25942</a>
Reactivity	Cynomolgus, Human
Clonality	Monoclonal
Isotype	IgG2SA
Calculated MW	146.2 KDa

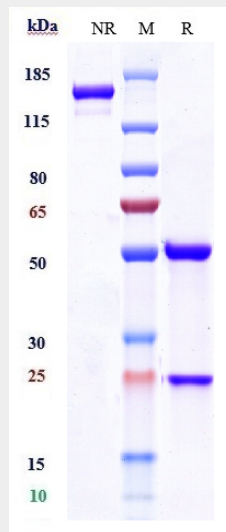
**Anti-TNFRSF5 / CD40 Reference Antibody (selicrelumab) - Additional Information****Target/Specificity**  
TNFRSF5 / CD40**Endotoxin**  
< 0.001EU/ µg, determined by LAL method.**Conjugation**  
Unconjugated**Expression system**  
CHO Cell**Format**  
Purified monoclonal antibody supplied in PBS, pH6.0, without preservative. This antibody is purified through a protein A column.**Anti-TNFRSF5 / CD40 Reference Antibody (selicrelumab) - Protein Information****Name** CD40**Synonyms** TNFRSF5**Function**  
Receptor for TNFSF5/CD40LG (PubMed: <http://www.uniprot.org/citations/31331973> target="\_blank">31331973</a>). Transduces TRAF6- and MAP3K8-mediated signals that activate ERK in macrophages and B cells, leading to induction of immunoglobulin secretion (By similarity).**Cellular Location**  
[Isoform I]: Cell membrane; Single-pass type I membrane protein**Tissue Location**  
B-cells and in primary carcinomas.

## Anti-TNFRSF5 / CD40 Reference Antibody (selicrelumab) - Protocols

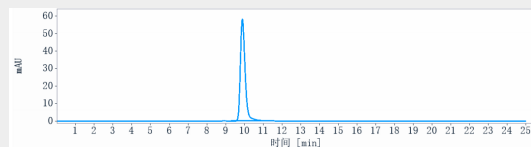
Provided below are standard protocols that you may find useful for product applications.

- [Western Blot](#)
- [Blocking Peptides](#)
- [Dot Blot](#)
- [Immunohistochemistry](#)
- [Immunofluorescence](#)
- [Immunoprecipitation](#)
- [Flow Cytometry](#)
- [Cell Culture](#)

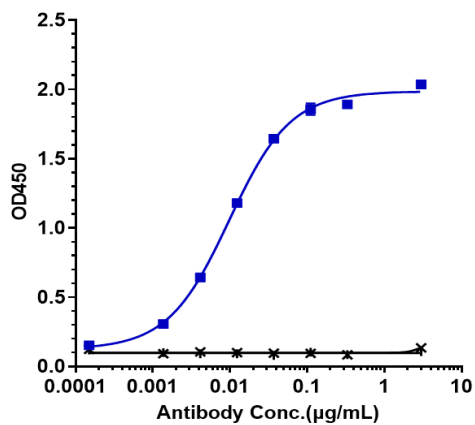
## Anti-TNFRSF5 / CD40 Reference Antibody (selicrelumab) - Images



Anti-TNFRSF5 / CD40 Reference Antibody (selicrelumab) on SDS-PAGE under reducing (R) condition. The gel was stained with Coomassie Blue. The purity of the protein is greater than 95%



The purity of Anti-TNFRSF5 / CD40 Reference Antibody (selicrelumab) is more than 95%, determined by SEC-HPLC.



Immobilized human CD40 His at 2 µg/mL can bind Anti-TNFRSF5 / CD40 Reference Antibody (selicrelumab) □EC<sub>50</sub>=0.009782 µg/mL