

**Anti-CSF2Ra / GM-CSFRa / CD116 Reference Antibody (mavrilimumab)
Recombinant Antibody
Catalog # APR10083**

Specification

Anti-CSF2Ra / GM-CSFRa / CD116 Reference Antibody (mavrilimumab) - Product Information

| | |
|-------------------|------------------------|
| Application | FC, E, FTA |
| Primary Accession | P15509 |
| Reactivity | Cynomolgus, Human |
| Clonality | Monoclonal |
| Isotype | IgG4 |
| Calculated MW | 143.2 KDa |

Anti-CSF2Ra / GM-CSFRa / CD116 Reference Antibody (mavrilimumab) - Additional Information

Target/Specificity

CSF2Ra / GM-CSFRa / CD116

Endotoxin

< 0.001EU/ µg,determined by LAL method.

Conjugation

Unconjugated

Expression system

CHO Cell

Format

Purified monoclonal antibody supplied in PBS, pH6.0, without preservative.This antibody is purified through a protein A column.

Anti-CSF2Ra / GM-CSFRa / CD116 Reference Antibody (mavrilimumab) - Protein Information

Name CSF2RA

Synonyms CSF2R, CSF2RY

Function

Low affinity receptor for granulocyte-macrophage colony- stimulating factor. Transduces a signal that results in the proliferation, differentiation, and functional activation of hematopoietic cells.

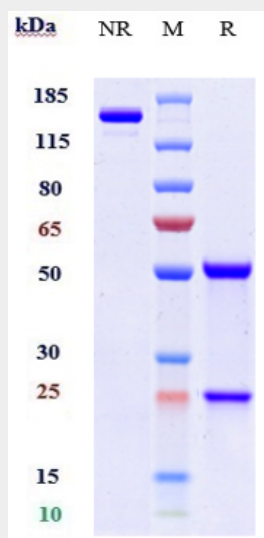
Cellular Location

Cell membrane; Single-pass type I membrane protein [Isoform 4]: Secreted.

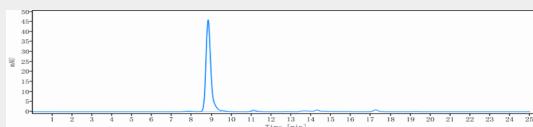
Anti-CSF2Ra / GM-CSFRa / CD116 Reference Antibody (mavrilimumab) - Protocols

Provided below are standard protocols that you may find useful for product applications.

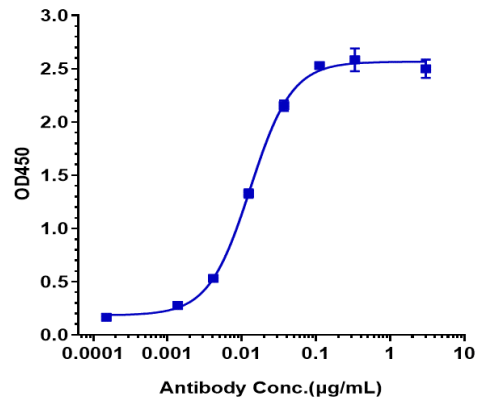
- [Western Blot](#)
- [Blocking Peptides](#)
- [Dot Blot](#)
- [Immunohistochemistry](#)
- [Immunofluorescence](#)
- [Immunoprecipitation](#)
- [Flow Cytometry](#)
- [Cell Culture](#)

Anti-CSF2Ra / GM-CSFRa / CD116 Reference Antibody (mavrilimumab) - Images

Anti-CSF2Ra / GM-CSFRa / CD116 Reference Antibody (mavrilimumab) on SDS-PAGE under reducing (R) condition. The gel was stained with Coomassie Blue. The purity of the protein is greater than 95%



The purity of Anti-CSF2Ra / GM-CSFRa / CD116 Reference Antibody (mavrilimumab) is more than 96.17% ,determined by SEC-HPLC.



Immobilized human CD116 His at 2 µg/mL can bind Anti-CSF2Ra / GM-CSFRa / CD116 Reference Antibody (mavrilimumab) $EC_{50}=0.01299$ µg/mL