

**Anti-Complement C5aR1 Reference Antibody (avdoralimab)
Recombinant Antibody
Catalog # APR10081****Specification**

Anti-Complement C5aR1 Reference Antibody (avdoralimab) - Product Information

Application	FC, E, FTA
Primary Accession	P21730
Reactivity	Human
Clonality	Monoclonal
Isotype	IgG1
Calculated MW	145.9 KDa

Anti-Complement C5aR1 Reference Antibody (avdoralimab) - Additional Information**Target/Specificity**
Complement C5aR1**Endotoxin**
< 0.001EU/ µg,determined by LAL method.**Conjugation**
Unconjugated**Expression system**
CHO Cell**Format**
Purified monoclonal antibody supplied in PBS, pH6.0, without preservative.This antibody is purified through a protein A column.**Anti-Complement C5aR1 Reference Antibody (avdoralimab) - Protein Information****Name** C5AR1**Synonyms** C5AR, C5R1**Function**

Receptor for the chemotactic and inflammatory peptide anaphylatoxin C5a (PubMed:10636859, PubMed:15153520, PubMed:1847994, PubMed:29300009, PubMed:7622471, PubMed:8182049, PubMed:9553099). The ligand interacts with at least two sites on the receptor: a high- affinity site on the extracellular N-terminus, and a second site in the transmembrane region which activates downstream signaling

events (PubMed:7622471, PubMed:8182049, PubMed:9553099). Receptor activation stimulates chemotaxis, granule enzyme release, intracellular calcium release and superoxide anion production (PubMed:10636859, PubMed:15153520).

Cellular Location

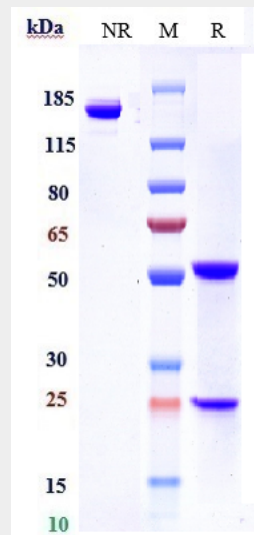
Cell membrane; Multi-pass membrane protein. Cytoplasmic vesicle. Note=Phosphorylated C5aR colocalizes with ARRB1 and ARRB2 in cytoplasmic vesicles

Anti-Complement C5aR1 Reference Antibody (avdoralimab) - Protocols

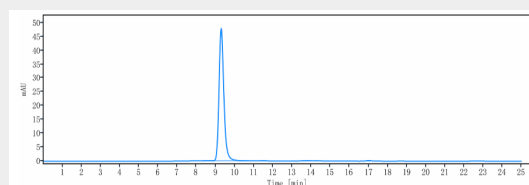
Provided below are standard protocols that you may find useful for product applications.

- [Western Blot](#)
- [Blocking Peptides](#)
- [Dot Blot](#)
- [Immunohistochemistry](#)
- [Immunofluorescence](#)
- [Immunoprecipitation](#)
- [Flow Cytometry](#)
- [Cell Culture](#)

Anti-Complement C5aR1 Reference Antibody (avdoralimab) - Images

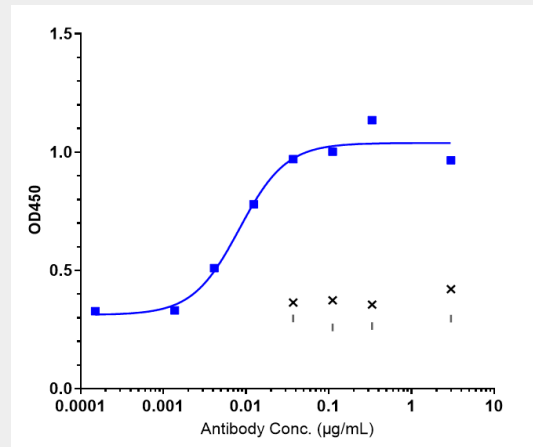


Anti-Complement C5aR1 Reference Antibody (avdoralimab) on SDS-PAGE under reducing (R) condition. The gel was stained with Coomassie Blue. The purity of the protein is greater than 95%



The purity of Anti-Complement C5aR1 Reference Antibody (avdoralimab) is more than 99.63%

,determined by SEC-HPLC.



Immobilized human C5AR1 VLP at 16 µg/mL can bind Anti-Complement C5aR1 Reference Antibody (avdoralimab) $EC_{50}=0.008278$ µg/mL