

Anti-C1s Reference Antibody (sutimlimab)
Recombinant Antibody
Catalog # APR10080

Specification

Anti-C1s Reference Antibody (sutimlimab) - Product Information

Application	FC, E, FTA
Primary Accession	P09871
Reactivity	Human
Clonality	Monoclonal
Isotype	IgG4SP
Calculated MW	144.8 KDa

Anti-C1s Reference Antibody (sutimlimab) - Additional Information

Target/Specificity
C1s

Endotoxin
< 0.001EU/ µg,determined by LAL method.

Conjugation
Unconjugated

Expression system
CHO Cell

Format
Purified monoclonal antibody supplied in PBS, pH6.0, without preservative.This antibody is purified through a protein A column.

Anti-C1s Reference Antibody (sutimlimab) - Protein Information

Name C1S

Function
C1s B chain is a serine protease that combines with C1q and C1r to form C1, the first component of the classical pathway of the complement system. C1r activates C1s so that it can, in turn, activate C2 and C4. Cleaves also IGFBP5 and thereby inhibits the trophic effects of IGF1.

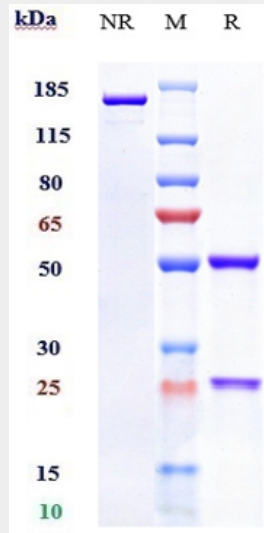
Anti-C1s Reference Antibody (sutimlimab) - Protocols

Provided below are standard protocols that you may find useful for product applications.

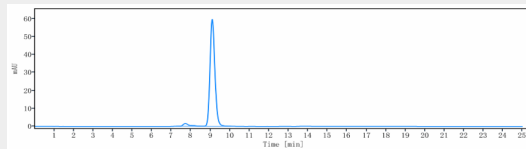
- [Western Blot](#)
- [Blocking Peptides](#)

- [Dot Blot](#)
- [Immunohistochemistry](#)
- [Immunofluorescence](#)
- [Immunoprecipitation](#)
- [Flow Cytometry](#)
- [Cell Culture](#)

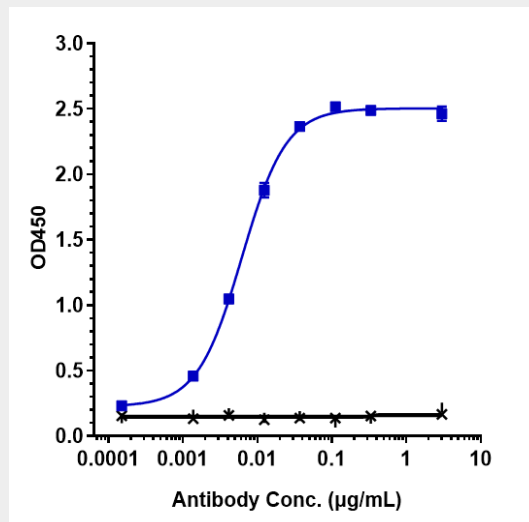
Anti-C1s Reference Antibody (sutimlimab) - Images



Anti-C1s Reference Antibody (sutimlimab) on SDS-PAGE under reducing (R) condition. The gel was stained with Coomassie Blue. The purity of the protein is greater than 95%



The purity of Anti-C1s Reference Antibody (sutimlimab) is more than 96.87%, determined by SEC-HPLC.



Immobilized human C1s His at 2 µg/mL can bind Anti-C1s Reference Antibody (sutimlimab) EC₅₀=0.006163 µg/mL

