

**Anti-BTLA / CD272 Reference Antibody (icatolimab)
Recombinant Antibody
Catalog # APR10079****Specification**

Anti-BTLA / CD272 Reference Antibody (icatolimab) - Product Information

Application	FC, E, FTA
Primary Accession	O7Z6A9
Reactivity	Cynomolgus, Human
Clonality	Monoclonal
Isotype	IgG4SP
Calculated MW	146 KDa

Anti-BTLA / CD272 Reference Antibody (icatolimab) - Additional Information**Target/Specificity**
BTLA / CD272**Endotoxin**
< 0.001EU/ µg, determined by LAL method.**Conjugation**
Unconjugated**Expression system**
CHO Cell**Format**
Purified monoclonal antibody supplied in PBS, pH6.0, without preservative. This antibody is purified through a protein A column.**Anti-BTLA / CD272 Reference Antibody (icatolimab) - Protein Information****Name** BTLA {ECO:0000303|PubMed:12796776, ECO:0000312|HGNC:HGNC:21087}**Function**
Inhibitory receptor on lymphocytes that negatively regulates antigen receptor signaling via PTPN6/SHP-1 and PTPN11/SHP-2 (PubMed: 12796776, PubMed: 14652006, PubMed: 15568026, PubMed: 18193050). May interact in cis (on the same cell) or in trans (on other cells) with TNFRSF14 (PubMed: 19915044). In cis interactions, appears to play an immune regulatory role inhibiting in trans interactions in naive T cells to maintain a resting state. In trans interactions, can predominate during adaptive immune response to provide survival signals to effector T cells (PubMed: 19915044).

Cellular Location

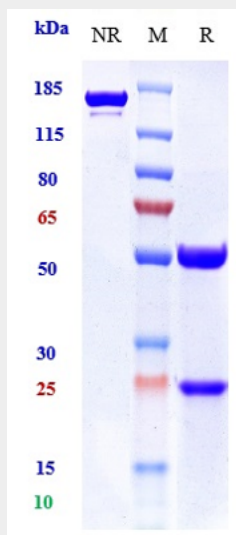
Cell membrane; Single-pass type I membrane protein

Anti-BTLA / CD272 Reference Antibody (icatolimab) - Protocols

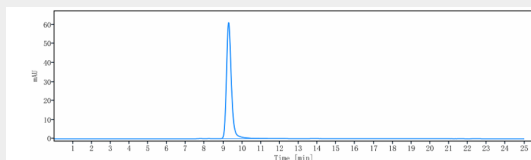
Provided below are standard protocols that you may find useful for product applications.

- [Western Blot](#)
- [Blocking Peptides](#)
- [Dot Blot](#)
- [Immunohistochemistry](#)
- [Immunofluorescence](#)
- [Immunoprecipitation](#)
- [Flow Cytometry](#)
- [Cell Culture](#)

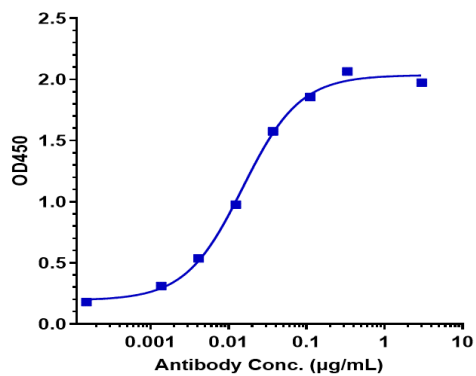
Anti-BTLA / CD272 Reference Antibody (icatolimab) - Images



Anti-BTLA / CD272 Reference Antibody (icatolimab) on SDS-PAGE under reducing (R) condition. The gel was stained with Coomassie Blue. The purity of the protein is greater than 95%



The purity of Anti-BTLA / CD272 Reference Antibody (icatolimab) is more than 96.73%, determined by SEC-HPLC.



Immobilized human BTLA His at 2 µg/mL can bind Anti-BTLA / CD272 Reference Antibody (icatolimab) □EC50=0.01515 µg/mL