

**Anti-B7-H4 / VTCN1 Reference Antibody (alsevalimab)
Recombinant Antibody
Catalog # APR10078**

Specification

Anti-B7-H4 / VTCN1 Reference Antibody (alsevalimab) - Product Information

Application	FC, E, FTA
Primary Accession	Q7Z7D3
Reactivity	Cynomolgus, Human, Mouse
Clonality	Monoclonal
Isotype	IgG1
Calculated MW	145 KDa

Anti-B7-H4 / VTCN1 Reference Antibody (alsevalimab) - Additional Information

Target/Specificity
B7-H4 / VTCN1

Endotoxin
< 0.001EU/ µg,determined by LAL method.

Conjugation
Unconjugated

Expression system
CHO Cell

Format
Purified monoclonal antibody supplied in PBS, pH6.0, without preservative.This antibody is purified through a protein A column.

Anti-B7-H4 / VTCN1 Reference Antibody (alsevalimab) - Protein Information

Name VTCN1 {ECO:0000312|EMBL:EAW56672.1}

Function
Negatively regulates T-cell-mediated immune response by inhibiting T-cell activation, proliferation, cytokine production and development of cytotoxicity. When expressed on the cell surface of tumor macrophages, plays an important role, together with regulatory T- cells (Treg), in the suppression of tumor-associated antigen-specific T-cell immunity. Involved in promoting epithelial cell transformation.

Cellular Location
Cell membrane; Single-pass type I membrane protein. Note=Expressed at the cell surface. A soluble form has also been detected. {ECO:0000255, ECO:0000269|PubMed:12818165, ECO:0000269|PubMed:15878339, ECO:0000269|PubMed:16782226}

Tissue Location

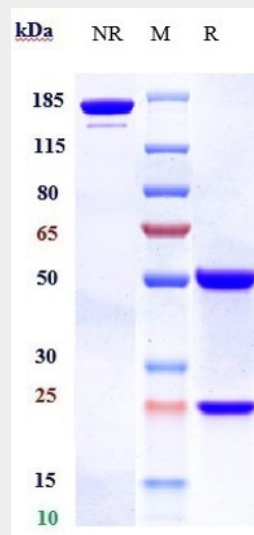
Overexpressed in breast, ovarian, endometrial, renal cell (RCC) and non-small-cell lung cancers (NSCLC). Expressed on activated T- and B-cells, monocytes and dendritic cells, but not expressed in most normal tissues (at protein level). Widely expressed, including in kidney, liver, lung, ovary, placenta, spleen and testis

Anti-B7-H4 / VTCN1 Reference Antibody (alsevalimab) - Protocols

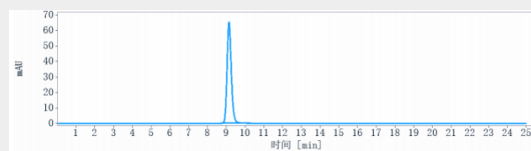
Provided below are standard protocols that you may find useful for product applications.

- [Western Blot](#)
- [Blocking Peptides](#)
- [Dot Blot](#)
- [Immunohistochemistry](#)
- [Immunofluorescence](#)
- [Immunoprecipitation](#)
- [Flow Cytometry](#)
- [Cell Culture](#)

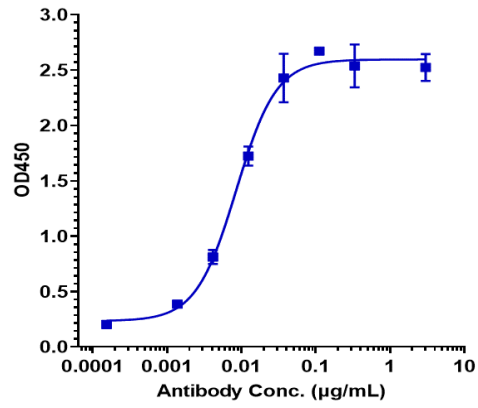
Anti-B7-H4 / VTCN1 Reference Antibody (alsevalimab) - Images



Anti-B7-H4 / VTCN1 Reference Antibody (alsevalimab) on SDS-PAGE under reducing (R) condition. The gel was stained with Coomassie Blue. The purity of the protein is greater than 95%



The purity of Anti-B7-H4 / VTCN1 Reference Antibody (alsevalimab) is more than 100%, determined by SEC-HPLC.



Immobilized human B7 H4 His at 2 µg/mL can bind Anti-B7-H4 / VTCN1 Reference Antibody (alsevalimab) $EC_{50}=0.008484$ µg/mL