

**Anti-ANGPTL3 Reference Antibody (evinacumab)
Recombinant Antibody
Catalog # APR10074****Specification**

Anti-ANGPTL3 Reference Antibody (evinacumab) - Product Information

Application	FC, E, FTA
Primary Accession	O9Y5C1
Reactivity	Cynomolgus, Human, Mouse
Clonality	Monoclonal
Isotype	IgG4SP
Calculated MW	150 KDa

Anti-ANGPTL3 Reference Antibody (evinacumab) - Additional Information**Target/Specificity**
ANGPTL3**Endotoxin**

< 0.001EU/ µg, determined by LAL method.

Conjugation

Unconjugated

Expression system

CHO Cell

Format

Purified monoclonal antibody supplied in PBS, pH6.0, without preservative. This antibody is purified through a protein A column.

Anti-ANGPTL3 Reference Antibody (evinacumab) - Protein Information

Name ANGPTL3

Synonyms ANGPT5

Function

Acts in part as a hepatokine that is involved in regulation of lipid and glucose metabolism (PubMed: [11788823](http://www.uniprot.org/citations/11788823), PubMed: [12909640](http://www.uniprot.org/citations/12909640), PubMed: [23661675](http://www.uniprot.org/citations/23661675), PubMed: [25495645](http://www.uniprot.org/citations/25495645)). Proposed to play a role in the trafficking of energy substrates to either storage or oxidative tissues in response to food intake (By similarity). Has a stimulatory effect on plasma triglycerides (TG), which is achieved by suppressing plasma TG clearance via inhibition of LPL activity. The inhibition of LPL activity appears to be an indirect mechanism involving recruitment of proprotein convertases PCSK6 and FURIN to LPL leading to cleavage and dissociation of LPL from the cell

surface; the function does not require ANGPTL3 proteolytic cleavage but seems to be mediated by the N- terminal domain, and is not inhibited by GPIHBP1 (PubMed:12097324, PubMed:19318355, PubMed:20581395). Can inhibit endothelial lipase, causing increased plasma levels of high density lipoprotein (HDL) cholesterol and phospholipids (PubMed:17110602, PubMed:19028676). Can bind to adipocytes to activate lipolysis, releasing free fatty acids and glycerol (PubMed:12565906). Suppresses LPL specifically in oxidative tissues which is required to route very low density lipoprotein (VLDL)-TG to white adipose tissue (WAT) for storage in response to food; the function may involve cooperation with circulating, liver-derived ANGPTL8 and ANGPTL4 expression in WAT (By similarity). Contributes to lower plasma levels of low density lipoprotein (LDL)-cholesterol by a mechanism that is independent of the canonical pathway implicating APOE and LDLR. May stimulate hypothalamic LPL activity (By similarity).

Cellular Location

Secreted {ECO:0000250, ECO:0000305|PubMed:11877390}. Cell projection, lamellipodium {ECO:0000250|UniProtKB:Q9R182}. Note=Colocalized with HSPG2 and activated ITGB3 on podocytes. {ECO:0000250|UniProtKB:Q9R182}

Tissue Location

Expressed principally in liver. Weakly expressed in kidney. Binds to adipocytes. Increased expression and colocalization with activated ITGB3 in glomeruli of patients with nephrotic syndrome showing effaced podocyte foot processes (at protein level)

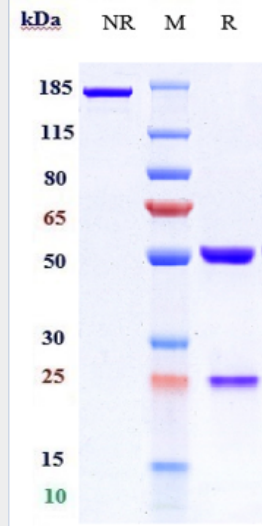
Anti-ANGPTL3 Reference Antibody (evinacumab) - Protocols

Provided below are standard protocols that you may find useful for product applications.

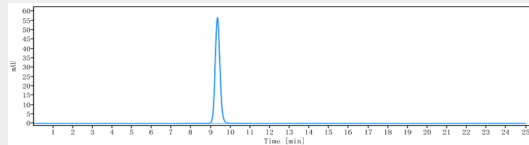
- [Western Blot](#)
- [Blocking Peptides](#)
- [Dot Blot](#)
- [Immunohistochemistry](#)
- [Immunofluorescence](#)
- [Immunoprecipitation](#)
- [Flow Cytometry](#)
- [Cell Culture](#)

Anti-ANGPTL3 Reference Antibody (evinacumab) - Images





Anti-ANGPTL3 Reference Antibody (evinacumab) on SDS-PAGE under reducing (R) condition. The gel was stained with Coomassie Blue. The purity of the protein is greater than 95%



The purity of Anti-ANGPTL3 Reference Antibody (evinacumab) is more than 99.48% ,determined by SEC-HPLC.