

**Anti-SIRP $\alpha$  / CD172g Reference Antibody (KWAR23)**  
**Recombinant Antibody**  
**Catalog # APR10072**

**Specification**

---

**Anti-SIRP $\alpha$  / CD172g Reference Antibody (KWAR23) - Product Information**

Application	FC, E, FTA
Primary Accession	<a href="#">O9P1W8</a>
Reactivity	Cynomolgus, Human, Mouse
Clonality	Monoclonal
Isotype	IgG4SP
Calculated MW	143.4 KDa

**Anti-SIRP $\alpha$  / CD172g Reference Antibody (KWAR23) - Additional Information**

**Target/Specificity**  
SIRP $\alpha$  / CD172g

**Endotoxin**  
< 0.001EU/  $\mu$ g,determined by LAL method.

**Conjugation**  
Unconjugated

**Expression system**  
CHO Cell

**Format**  
Purified monoclonal antibody supplied in PBS, pH6.0, without preservative.This antibody is purified through a protein A column.

**Anti-SIRP $\alpha$  / CD172g Reference Antibody (KWAR23) - Protein Information**

**Name** SIRPG

**Synonyms** SIRPB2

**Function**  
Probable immunoglobulin-like cell surface receptor. On binding with CD47, mediates cell-cell adhesion. Engagement on T-cells by CD47 on antigen-presenting cells results in enhanced antigen-specific T-cell proliferation and costimulates T-cell activation.

**Cellular Location**  
Membrane; Single- pass type I membrane protein

**Tissue Location**  
Detected in liver, and at very low levels in brain, heart, lung, pancreas, kidney, placenta and skeletal muscle. Expressed on CD4+ T-cells, CD8+ T-cells, CD56-bright natural killer (NK) cells,

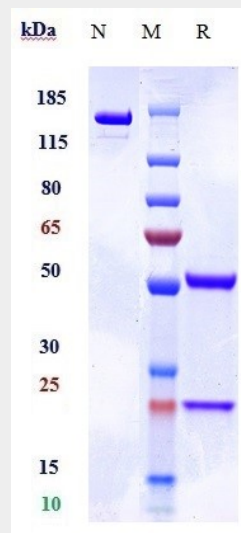
CD20+ cells, and all activated NK cells. Mainly present in the paracortical T-cell area of lymph nodes, with only sparse positive cells in the mantle and in the germinal center of B-cell follicles. In the thymus, primarily expressed in the medulla on mature T-lymphocytes that have undergone thymic selection.

### Anti-SIRP<sub>g</sub> / CD172<sub>g</sub> Reference Antibody (KWAR23) - Protocols

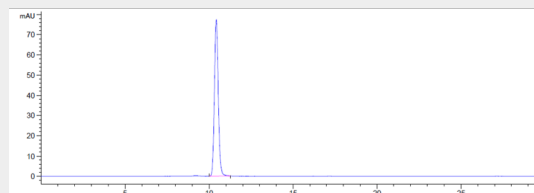
Provided below are standard protocols that you may find useful for product applications.

- [Western Blot](#)
- [Blocking Peptides](#)
- [Dot Blot](#)
- [Immunohistochemistry](#)
- [Immunofluorescence](#)
- [Immunoprecipitation](#)
- [Flow Cytometry](#)
- [Cell Culture](#)

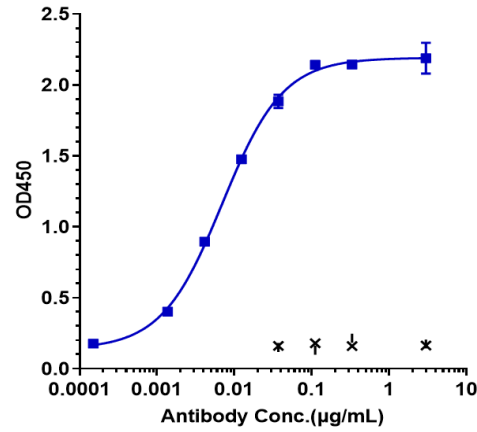
### Anti-SIRP<sub>g</sub> / CD172<sub>g</sub> Reference Antibody (KWAR23) - Images



Anti-SIRP<sub>g</sub> / CD172<sub>g</sub> Reference Antibody (KWAR23) on SDS-PAGE under reducing (R) condition. The gel was stained with Coomassie Blue. The purity of the protein is greater than 95%



The purity of Anti-SIRP<sub>g</sub> / CD172<sub>g</sub> Reference Antibody (KWAR23) is more than 100% ,determined by SEC-HPLC.



Immobilized human ALCAM His at 2 µg/mL can bind Anti-SIRP<sub>g</sub> / CD172g Reference Antibody (KWAR23) □ EC<sub>50</sub>=0.00698 µg/mL