

Anti-DLK1 Reference Antibody (LIV-1205)
Recombinant Antibody
Catalog # APR10063

Specification

Anti-DLK1 Reference Antibody (LIV-1205) - Product Information

| | |
|-------------------|--------------------------|
| Application | FC, E, FTA |
| Primary Accession | P80370 |
| Reactivity | Cynomolgus, Human, Mouse |
| Clonality | Monoclonal |
| Isotype | IgG1 |
| Calculated MW | 150 KDa |

Anti-DLK1 Reference Antibody (LIV-1205) - Additional Information

Target/Specificity
DLK1

Endotoxin
< 0.001EU/ µg,determined by LAL method.

Conjugation
Unconjugated

Expression system
CHO Cell

Format
Purified monoclonal antibody supplied in PBS, pH6.0, without preservative.This antibody is purified through a protein A column.

Anti-DLK1 Reference Antibody (LIV-1205) - Protein Information

Name DLK1

Synonyms DLK

Function
May have a role in neuroendocrine differentiation.

Cellular Location
Membrane; Single-pass type I membrane protein. Cytoplasm {ECO:0000250|UniProtKB:O70534}

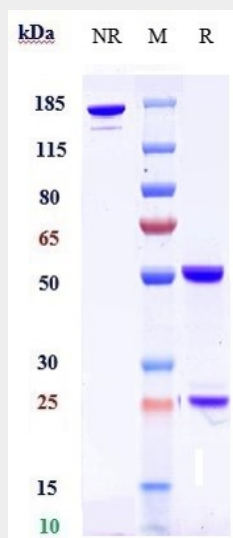
Tissue Location
Found within the stromal cells in close contact to the vascular structure of placental villi, yolk sac, fetal liver, adrenal cortex and pancreas and in the beta cells of the islets of Langerhans in the adult pancreas. Found also in some forms of neuroendocrine lung tumor tissue

Anti-DLK1 Reference Antibody (LIV-1205) - Protocols

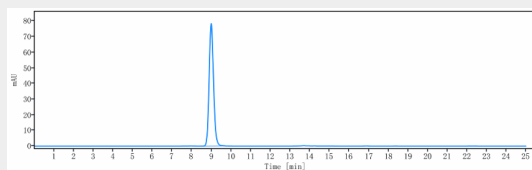
Provided below are standard protocols that you may find useful for product applications.

- [Western Blot](#)
- [Blocking Peptides](#)
- [Dot Blot](#)
- [Immunohistochemistry](#)
- [Immunofluorescence](#)
- [Immunoprecipitation](#)
- [Flow Cytometry](#)
- [Cell Culture](#)

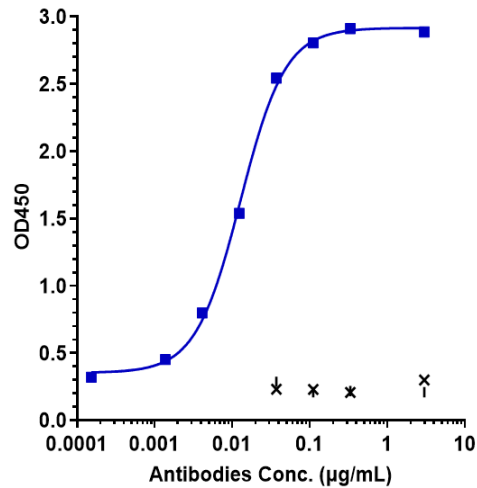
Anti-DLK1 Reference Antibody (LIV-1205) - Images



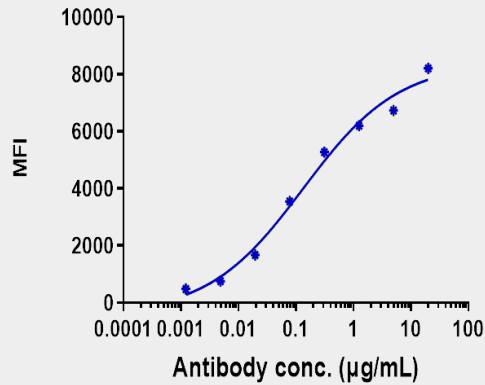
Anti-DLK1 Reference Antibody (LIV-1205) on SDS-PAGE under reducing (R) condition. The gel was stained with Coomassie Blue. The purity of the protein is greater than 95%



The purity of Anti-DLK1 Reference Antibody (LIV-1205) is more than 95% ,determined by SEC-HPLC.



Immobilized human DLK1.1 His at 2 µg/mL can bind Anti-DLK1 Reference Antibody (LIV-1205) EC₅₀=0.01281 µg/mL



Human DLK1 HEK293 cells were stained with Anti-DLK1 Reference Antibody (LIV-1205) and negative control protein respectively, washed and then followed by PE and analyzed with FACS, EC₁₅=0.1334 µg/mL