

**Anti-ERBB3/ HER3 Reference Antibody (patritumab deruxtecan)  
Recombinant Antibody  
Catalog # APR10048****Specification**

---

**Anti-ERBB3/ HER3 Reference Antibody (patritumab deruxtecan) - Product Information**

Application	FC, E, FTA
Primary Accession	<a href="#">P21860</a>
Reactivity	Cynomolgus, Human, Mouse
Clonality	Monoclonal
Isotype	IgG1
Calculated MW	146.86 KDa

**Anti-ERBB3/ HER3 Reference Antibody (patritumab deruxtecan) - Additional Information****Target/Specificity**

ERBB3 / HER3

**Endotoxin**

&lt; 0.001EU/ µg,determined by LAL method.

**Conjugation**

Dxd

**Expression system**

CHO Cell

**Format**

Purified monoclonal antibody supplied in PBS, pH6.0, without preservative.This antibody is purified through a protein A column.

**Anti-ERBB3/ HER3 Reference Antibody (patritumab deruxtecan) - Protein Information****Name** ERBB3**Synonyms** HER3**Function**

Tyrosine-protein kinase that plays an essential role as cell surface receptor for neuregulins. Binds to neuregulin-1 (NRG1) and is activated by it; ligand-binding increases phosphorylation on tyrosine residues and promotes its association with the p85 subunit of phosphatidylinositol 3-kinase (PubMed:<a href="http://www.uniprot.org/citations/20682778" target="\_blank">20682778</a>). May also be activated by CSPG5 (PubMed:<a href="http://www.uniprot.org/citations/15358134" target="\_blank">15358134</a>). Involved in the regulation of myeloid cell differentiation (PubMed:<a href="http://www.uniprot.org/citations/27416908" target="\_blank">27416908</a>).

**Cellular Location**

[Isoform 1]: Cell membrane; Single-pass type I membrane protein

### Tissue Location

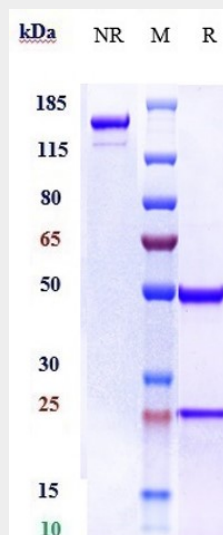
Epithelial tissues and brain.

### Anti-ERBB3/ HER3 Reference Antibody (patritumab deruxtecan) - Protocols

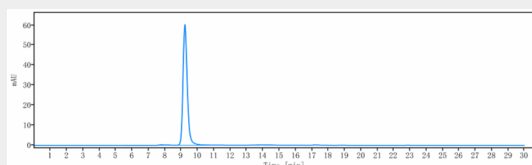
Provided below are standard protocols that you may find useful for product applications.

- [Western Blot](#)
- [Blocking Peptides](#)
- [Dot Blot](#)
- [Immunohistochemistry](#)
- [Immunofluorescence](#)
- [Immunoprecipitation](#)
- [Flow Cytometry](#)
- [Cell Culture](#)

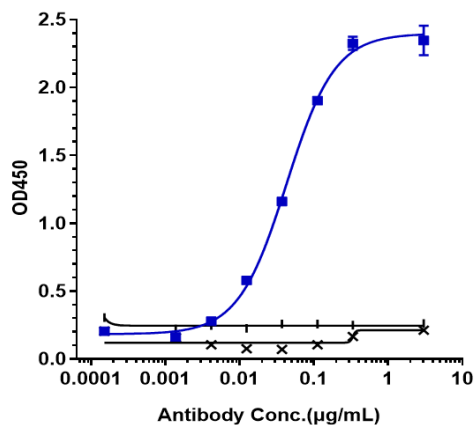
### Anti-ERBB3/ HER3 Reference Antibody (patritumab deruxtecan) - Images



Anti-ERBB3/ HER3 Reference Antibody (patritumab deruxtecan) on SDS-PAGE under reducing (R) condition. The gel was stained with Coomassie Blue. The purity of the protein is greater than 95%



The purity of Anti-ERBB3/ HER3 Reference Antibody (patritumab deruxtecan) is more than 99.19%, determined by SEC-HPLC.



Immobilized human HER3 His at 2 µg/mL can bind Anti-ERBB3/ HER3 Reference Antibody (patritumab deruxtecan) □EC<sub>50</sub>=0.044 µg/mL