

**Anti-ERBB3 / HER3 Reference Antibody (patritumab)
Recombinant Antibody
Catalog # APR10047**

Specification

Anti-ERBB3 / HER3 Reference Antibody (patritumab) - Product Information

| | |
|-------------------|------------------------|
| Application | FC, E, FTA |
| Primary Accession | P21860 |
| Reactivity | Rat, Human |
| Clonality | Monoclonal |
| Isotype | IgG1 |
| Calculated MW | 146.86 KDa |

Anti-ERBB3 / HER3 Reference Antibody (patritumab) - Additional Information

Target/Specificity
ERBB3 / HER3

Endotoxin
< 0.001EU/ µg,determined by LAL method.

Conjugation
Unconjugated

Expression system
CHO Cell

Format
Purified monoclonal antibody supplied in PBS, pH6.0, without preservative.This antibody is purified through a protein A column.

Anti-ERBB3 / HER3 Reference Antibody (patritumab) - Protein Information

Name ERBB3

Synonyms HER3

Function
Tyrosine-protein kinase that plays an essential role as cell surface receptor for neuregulins. Binds to neuregulin-1 (NRG1) and is activated by it; ligand-binding increases phosphorylation on tyrosine residues and promotes its association with the p85 subunit of phosphatidylinositol 3-kinase (PubMed:20682778). May also be activated by CSPG5 (PubMed:15358134). Involved in the regulation of myeloid cell differentiation (PubMed:27416908).

Cellular Location
[Isoform 1]: Cell membrane; Single-pass type I membrane protein

Tissue Location

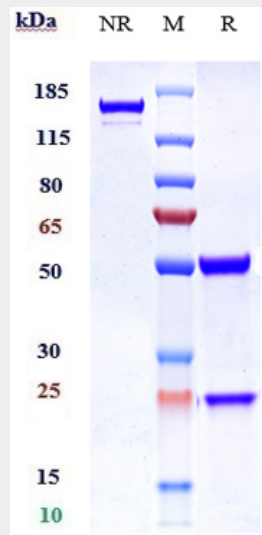
Epithelial tissues and brain.

Anti-ERBB3 / HER3 Reference Antibody (patritumab) - Protocols

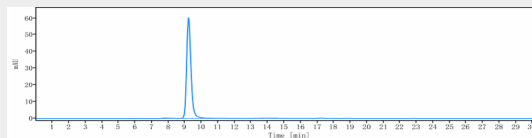
Provided below are standard protocols that you may find useful for product applications.

- [Western Blot](#)
- [Blocking Peptides](#)
- [Dot Blot](#)
- [Immunohistochemistry](#)
- [Immunofluorescence](#)
- [Immunoprecipitation](#)
- [Flow Cytometry](#)
- [Cell Culture](#)

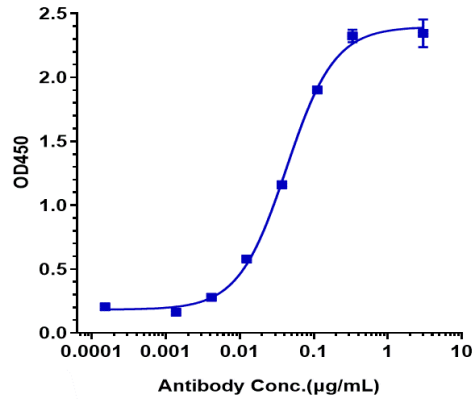
Anti-ERBB3 / HER3 Reference Antibody (patritumab) - Images



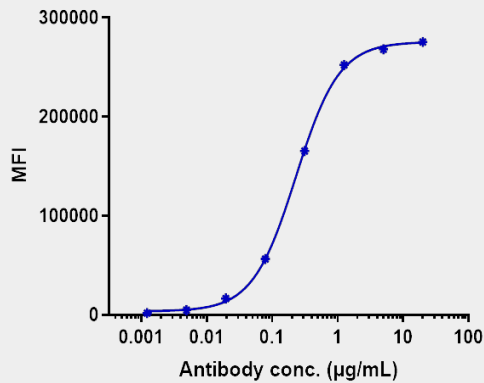
Anti-ERBB3 / HER3 Reference Antibody (patritumab) on SDS-PAGE under reducing (R) condition. The gel was stained with Coomassie Blue. The purity of the protein is greater than 95%



The purity of Anti-ERBB3 / HER3 Reference Antibody (patritumab) is more than 99.19%, determined by SEC-HPLC.



Immobilized human HER3 His at 2 µg/mL can bind Anti-ERBB3 / HER3 Reference Antibody (patritumab) $EC_{50}=0.04264$ µg/mL



Human HER3 HEK293 cells were stained with Anti-ERBB3 / HER3 Reference Antibody (patritumab) and negative control protein respectively, washed and then followed by PE and analyzed with FACS, $EC_{99}=0.2297$ µg/mL