

**Anti-ERBB2 / HER2 / CD340 Reference Antibody (trastuzumab deruxtecan)
Recombinant Antibody
Catalog # APR10045**

Specification

Anti-ERBB2 / HER2 / CD340 Reference Antibody (trastuzumab deruxtecan) - Product Information

Application	FC, E, FTA
Primary Accession	P04626
Reactivity	Human
Clonality	Monoclonal
Isotype	IgG1
Calculated MW	153.75 KDa

Anti-ERBB2 / HER2 / CD340 Reference Antibody (trastuzumab deruxtecan) - Additional Information

Target/Specificity

ERBB2 / HER2 / CD340

Endotoxin

< 0.001EU/ µg,determined by LAL method.

Conjugation

Dxd

Expression system

CHO Cell

Format

Purified monoclonal antibody supplied in PBS, pH6.0, without preservative.This antibody is purified through a protein A column.

Anti-ERBB2 / HER2 / CD340 Reference Antibody (trastuzumab deruxtecan) - Protein Information

Name ERBB2

Synonyms HER2, MLN19, NEU, NGL

Function

Protein tyrosine kinase that is part of several cell surface receptor complexes, but that apparently needs a coreceptor for ligand binding. Essential component of a neuregulin-receptor complex, although neuregulins do not interact with it alone. GP30 is a potential ligand for this receptor. Regulates outgrowth and stabilization of peripheral microtubules (MTs). Upon ERBB2 activation, the MEMO1-RHOA-DIAPH1 signaling pathway elicits the phosphorylation and thus the inhibition of GSK3B at cell membrane. This prevents the phosphorylation of APC and CLASP2, allowing its association with the cell membrane. In turn, membrane-bound APC allows the localization of

MACF1 to the cell membrane, which is required for microtubule capture and stabilization.

Cellular Location

Cell membrane; Single-pass type I membrane protein. Cell projection, ruffle membrane; Single-pass type I membrane protein. Note=Internalized from the cell membrane in response to EGF stimulation. [Isoform 2]: Cytoplasm. Nucleus.

Tissue Location

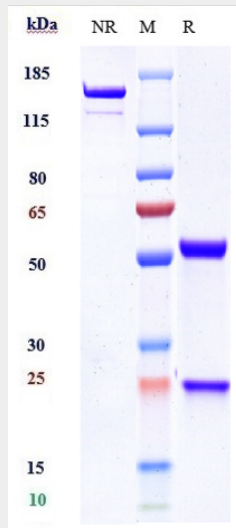
Expressed in a variety of tumor tissues including primary breast tumors and tumors from small bowel, esophagus, kidney and mouth.

Anti-ERBB2 / HER2 / CD340 Reference Antibody (trastuzumab deruxtecan) - Protocols

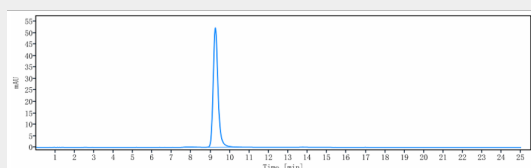
Provided below are standard protocols that you may find useful for product applications.

- [Western Blot](#)
- [Blocking Peptides](#)
- [Dot Blot](#)
- [Immunohistochemistry](#)
- [Immunofluorescence](#)
- [Immunoprecipitation](#)
- [Flow Cytometry](#)
- [Cell Culture](#)

Anti-ERBB2 / HER2 / CD340 Reference Antibody (trastuzumab deruxtecan) - Images

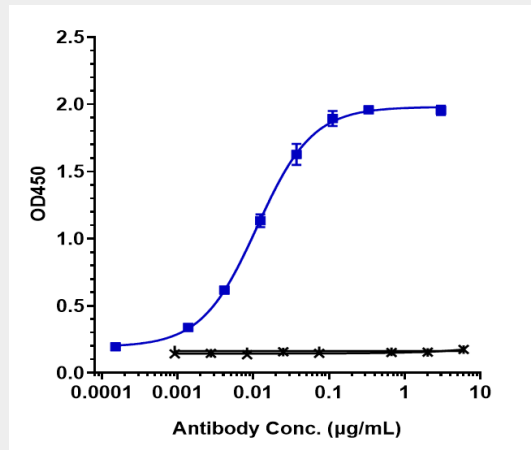


Anti-ERBB2 / HER2 / CD340 Reference Antibody (trastuzumab deruxtecan) on SDS-PAGE under reducing (R) condition. The gel was stained with Coomassie Blue. The purity of the protein is greater than 90%



The purity of Anti-ERBB2 / HER2 / CD340 Reference Antibody (trastuzumab deruxtecan) is more

than 93.54% ,determined by SEC-HPLC.



Immobilized human HER2(23 652) His at 2 µg/mL can bind Anti-ERBB2 / HER2 / CD340 Reference Antibody (trastuzumab deruxtecan) □EC50=0.01115 µg/mL