

**Anti-CD20 Reference Antibody (rituximab)  
Recombinant Antibody  
Catalog # APR10038****Specification**

---

**Anti-CD20 Reference Antibody (rituximab) - Product Information**

|                   |                        |
|-------------------|------------------------|
| Application       | FC, E, FTA             |
| Primary Accession | <a href="#">P11836</a> |
| Reactivity        | Cynomolgus, Human      |
| Clonality         | Monoclonal             |
| Isotype           | IgG1                   |
| Calculated MW     | 145.2 KDa              |

**Anti-CD20 Reference Antibody (rituximab) - Additional Information****Target/Specificity**  
CD20**Endotoxin**  
< 0.001EU/ µg, determined by LAL method.**Conjugation**  
Unconjugated**Expression system**  
CHO Cell**Format**  
Purified monoclonal antibody supplied in PBS, pH6.0, without preservative. This antibody is purified through a protein A column.**Anti-CD20 Reference Antibody (rituximab) - Protein Information****Name** MS4A1**Synonyms** CD20**Function**  
B-lymphocyte-specific membrane protein that plays a role in the regulation of cellular calcium influx necessary for the development, differentiation, and activation of B-lymphocytes (PubMed: [12920111](http://www.uniprot.org/citations/12920111), PubMed: [3925015](http://www.uniprot.org/citations/3925015), PubMed: [7684739](http://www.uniprot.org/citations/7684739)). Functions as a store-operated calcium (SOC) channel component promoting calcium influx after activation by the B-cell receptor/BCR (PubMed: [12920111](http://www.uniprot.org/citations/12920111), PubMed: [18474602](http://www.uniprot.org/citations/18474602), PubMed: [7684739](http://www.uniprot.org/citations/7684739)).

**Cellular Location**

Cell membrane; Multi-pass membrane protein. Cell membrane; Lipid-anchor. Note=Constitutively associated with membrane rafts.

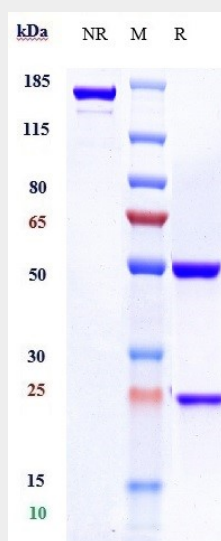
**Tissue Location**

Expressed on B-cells.

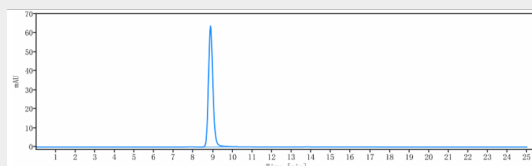
**Anti-CD20 Reference Antibody (rituximab) - Protocols**

Provided below are standard protocols that you may find useful for product applications.

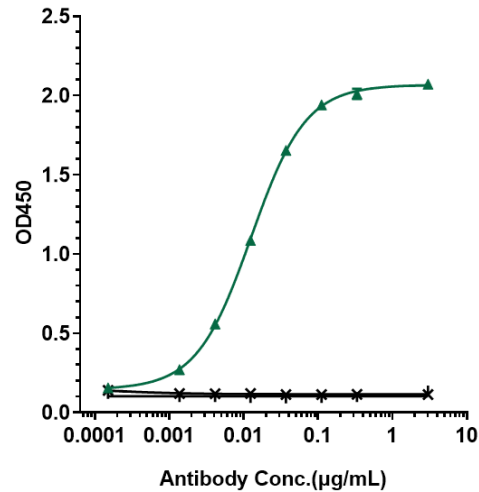
- [Western Blot](#)
- [Blocking Peptides](#)
- [Dot Blot](#)
- [Immunohistochemistry](#)
- [Immunofluorescence](#)
- [Immunoprecipitation](#)
- [Flow Cytometry](#)
- [Cell Culture](#)

**Anti-CD20 Reference Antibody (rituximab) - Images**

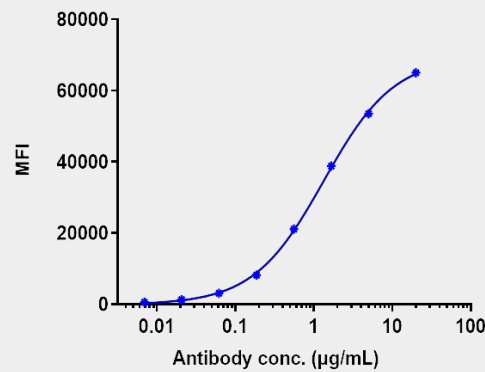
Anti-CD20 Reference Antibody (rituximab) on SDS-PAGE under reducing (R) condition. The gel was stained with Coomassie Blue. The purity of the protein is greater than 95%



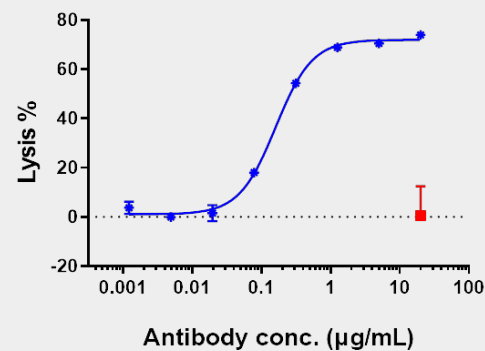
The purity of Anti-CD20 Reference Antibody (rituximab) is more than 98.97%, determined by SEC-HPLC.



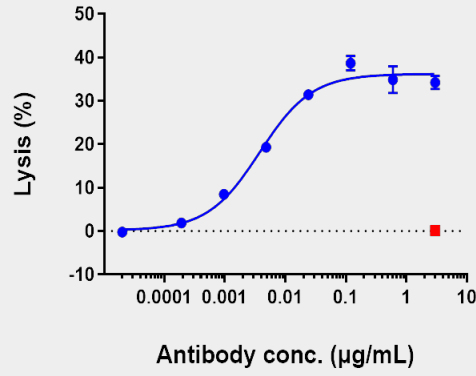
Immobilized human EGFR His at 2 µg/mL can bind Anti-CD20 Reference Antibody (rituximab) □ EC<sub>50</sub>=0.01573/0.01258 µg/mL



Raji cells were stained with Anti-CD20 Reference Antibody (rituximab) and negative control protein respectively, washed and then followed by PE and analyzed with FACS, EC<sub>87</sub>=1.334 µg/mL



Anti-CD20 Reference Antibody (rituximab)-induced CDC activity was evaluated using Raji Cell. The max lysis rate was approximately 74%.



Anti-CD20 Reference Antibody (rituximab)-induced ADCC activity was evaluated using Raji Cell. The max Lysis rate was approximately 35%.