

**Anti-CD19 Reference Antibody (denintuzumab-MMAF)
Recombinant Antibody
Catalog # APR10032****Specification**

Anti-CD19 Reference Antibody (denintuzumab-MMAF) - Product Information

Application	FC, E, FTA
Primary Accession	P15391
Reactivity	Human
Clonality	Monoclonal
Isotype	IgG1
Calculated MW	144.54 KDa

Anti-CD19 Reference Antibody (denintuzumab-MMAF) - Additional Information**Target/Specificity**
CD19**Endotoxin**

< 0.001EU/ µg,determined by LAL method.

Conjugation

Unconjugated

Expression system

CHO Cell

Format

Purified monoclonal antibody supplied in PBS, pH6.0, without preservative.This antibody is purified through a protein A column.

Anti-CD19 Reference Antibody (denintuzumab-MMAF) - Protein Information**Name** CD19**Function**

Functions as a coreceptor for the B-cell antigen receptor complex (BCR) on B-lymphocytes (PubMed:29523808). Decreases the threshold for activation of downstream signaling pathways and for triggering B-cell responses to antigens (PubMed:1373518, PubMed:16672701, PubMed:2463100). Activates signaling pathways that lead to the activation of phosphatidylinositol 3-kinase and the mobilization of intracellular Ca(2+) stores (PubMed:12387743, PubMed:16672701, PubMed:9317126, PubMed:9382888). Is not required

for early steps during B cell differentiation in the blood marrow (PubMed:9317126). Required for normal differentiation of B-1 cells (By similarity). Required for normal B cell differentiation and proliferation in response to antigen challenges (PubMed:1373518, PubMed:2463100). Required for normal levels of serum immunoglobulins, and for production of high-affinity antibodies in response to antigen challenge (PubMed:12387743, PubMed:16672701, PubMed:9317126).

Cellular Location

Cell membrane; Single-pass type I membrane protein. Membrane raft
{ECO:0000250|UniProtKB:P25918}; Single-pass type I membrane protein
{ECO:0000250|UniProtKB:P25918}

Tissue Location

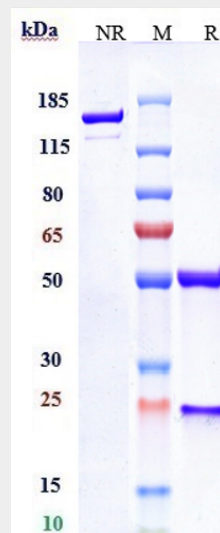
Detected on marginal zone and germinal center B cells in lymph nodes (PubMed:2463100).
Detected on blood B cells (at protein level) (PubMed:16672701, PubMed:2463100)

Anti-CD19 Reference Antibody (denintuzumab-MMAF) - Protocols

Provided below are standard protocols that you may find useful for product applications.

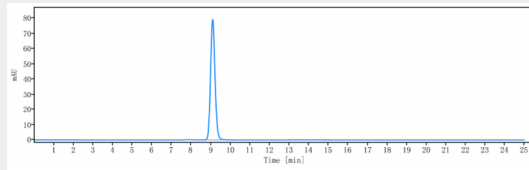
- [Western Blot](#)
- [Blocking Peptides](#)
- [Dot Blot](#)
- [Immunohistochemistry](#)
- [Immunofluorescence](#)
- [Immunoprecipitation](#)
- [Flow Cytometry](#)
- [Cell Culture](#)

Anti-CD19 Reference Antibody (denintuzumab-MMAF) - Images

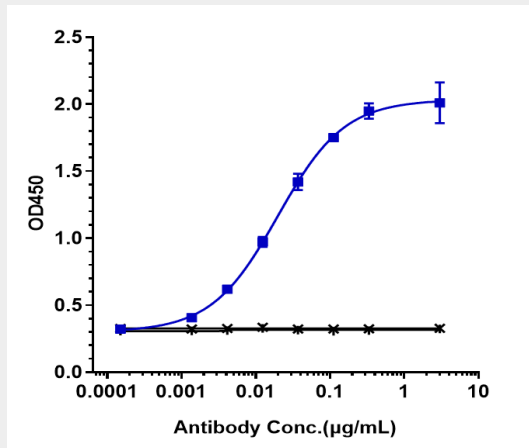


Anti-CD19 Reference Antibody (denintuzumab-MMAF) on SDS-PAGE under reducing (R) condition.

The gel was stained with Coomassie Blue. The purity of the protein is greater than 95%



The purity of Anti-CD19 Reference Antibody (denintuzumab-MMAF) is more than 99.58%, determined by SEC-HPLC.



Immobilized human EGFR His at 2 µg/mL can bind Anti-CD19 Reference Antibody (denintuzumab-MMAF) $EC_{50} = 0.01985$ µg/mL.