

**Anti-TNFRSF10B / TRAILR2 / CD262 Reference Antibody (conatumumab)
Recombinant Antibody
Catalog # APR10023**

Specification

Anti-TNFRSF10B / TRAILR2 / CD262 Reference Antibody (conatumumab) - Product Information

Application	FC, E, FTA
Primary Accession	O14763
Reactivity	Cynomolgus, Human, Mouse
Clonality	Monoclonal
Isotype	IgG1
Calculated MW	145.44 KDa

Anti-TNFRSF10B / TRAILR2 / CD262 Reference Antibody (conatumumab) - Additional Information

Target/Specificity

TNFRSF10B / TRAILR2 / CD262

Endotoxin

< 0.001EU/ µg,determined by LAL method.

Conjugation

Unconjugated

Expression system

CHO Cell

Format

Purified monoclonal antibody supplied in PBS, pH6.0, without preservative.This antibody is purified through a protein A column.

Anti-TNFRSF10B / TRAILR2 / CD262 Reference Antibody (conatumumab) - Protein Information

Name TNFRSF10B

Synonyms DR5, KILLER, TRAILR2, TRICK2, ZTNFR9

Function

Receptor for the cytotoxic ligand TNFSF10/TRAIL (PubMed:10549288). The adapter molecule FADD recruits caspase-8 to the activated receptor. The resulting death-inducing signaling complex (DISC) performs caspase-8 proteolytic activation which initiates the subsequent cascade of caspases (aspartate-specific cysteine proteases) mediating apoptosis. Promotes the activation of NF-kappa-B. Essential for ER stress-induced apoptosis.

Cellular Location

Membrane; Single-pass type I membrane protein.

Tissue Location

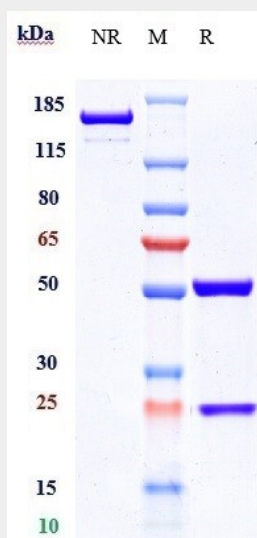
Widely expressed in adult and fetal tissues; very highly expressed in tumor cell lines such as HeLaS3, K-562, HL-60, SW480, A-549 and G-361; highly expressed in heart, peripheral blood lymphocytes, liver, pancreas, spleen, thymus, prostate, ovary, uterus, placenta, testis, esophagus, stomach and throughout the intestinal tract; not detectable in brain

Anti-TNFRSF10B / TRAILR2 / CD262 Reference Antibody (conatumumab) - Protocols

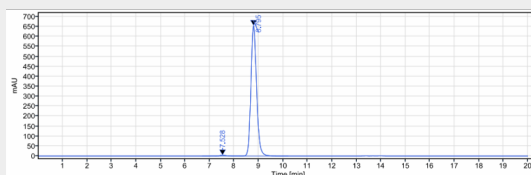
Provided below are standard protocols that you may find useful for product applications.

- [Western Blot](#)
- [Blocking Peptides](#)
- [Dot Blot](#)
- [Immunohistochemistry](#)
- [Immunofluorescence](#)
- [Immunoprecipitation](#)
- [Flow Cytometry](#)
- [Cell Culture](#)

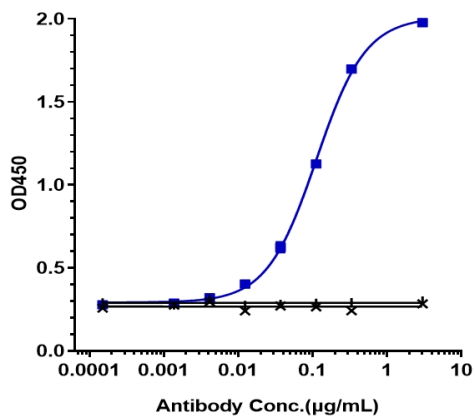
Anti-TNFRSF10B / TRAILR2 / CD262 Reference Antibody (conatumumab) - Images



Anti-TNFRSF10B / TRAILR2 / CD262 Reference Antibody (conatumumab) on SDS-PAGE under reducing (R) condition. The gel was stained with Coomassie Blue. The purity of the protein is greater than 95%



The purity of Anti-TNFRSF10B / TRAILR2 / CD262 Reference Antibody (conatumumab) is more than 98.9%, determined by SEC-HPLC.



Immobilized Cyno DR5 His at 2 µg/mL can bind Anti-TNFRSF10B / TRAILR2 / CD262 Reference Antibody (conatumumab) $EC_{50}=0.1119$ µg/mL.