

**Anti-CDH6 / K-Cadherin Reference Antibody (HKT288)
Recombinant Antibody
Catalog # APR10022****Specification**

Anti-CDH6 / K-Cadherin Reference Antibody (HKT288) - Product Information

| | |
|-------------------|------------------------|
| Application | FC, E, FTA |
| Primary Accession | P55285 |
| Reactivity | Human |
| Clonality | Monoclonal |
| Isotype | IgG1 |
| Calculated MW | 144.24 KDa |

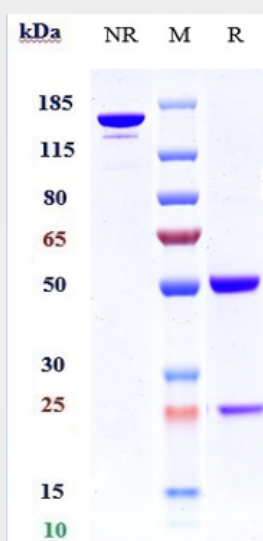
Anti-CDH6 / K-Cadherin Reference Antibody (HKT288) - Additional Information**Target/Specificity**
CDH6 / K-Cadherin**Endotoxin**
< 0.001EU/ µg,determined by LAL method.**Conjugation**
Unconjugated**Expression system**
CHO Cell**Format**
Purified monoclonal antibody supplied in PBS, pH6.0, without preservative.This antibody is purified through a protein A column.**Anti-CDH6 / K-Cadherin Reference Antibody (HKT288) - Protein Information****Name** CDH6**Function**
Cadherins are calcium-dependent cell adhesion proteins. They preferentially interact with themselves in a homophilic manner in connecting cells; cadherins may thus contribute to the sorting of heterogeneous cell types.**Cellular Location**
Cell membrane; Single-pass type I membrane protein**Tissue Location**
Highly expressed in brain, cerebellum, and kidney. Lung, pancreas, and gastric mucosa show a weak expression. Also expressed in certain liver and kidney carcinomas

Anti-CDH6 / K-Cadherin Reference Antibody (HKT288) - Protocols

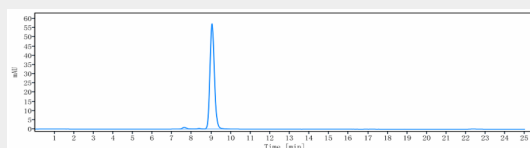
Provided below are standard protocols that you may find useful for product applications.

- [Western Blot](#)
- [Blocking Peptides](#)
- [Dot Blot](#)
- [Immunohistochemistry](#)
- [Immunofluorescence](#)
- [Immunoprecipitation](#)
- [Flow Cytometry](#)
- [Cell Culture](#)

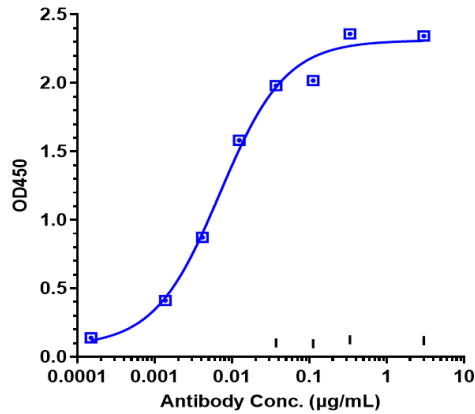
Anti-CDH6 / K-Cadherin Reference Antibody (HKT288) - Images



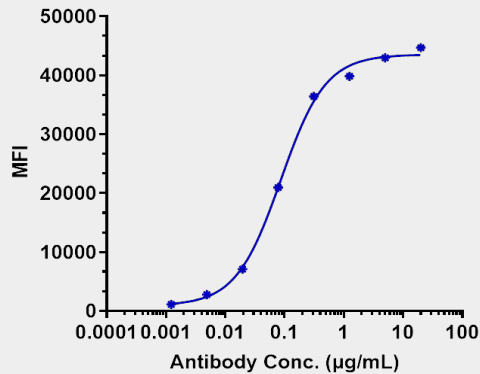
Anti-CDH6 / K-Cadherin Reference Antibody (HKT288) on SDS-PAGE under reducing (R) condition. The gel was stained with Coomassie Blue. The purity of the protein is greater than 95%



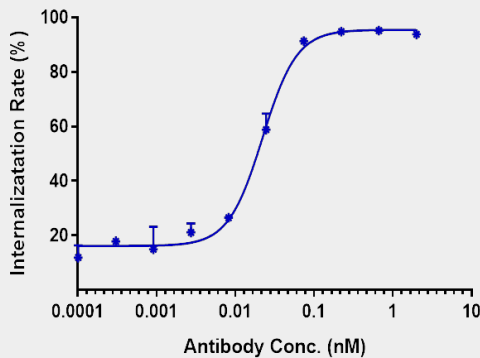
The purity of Anti-CDH6 / K-Cadherin Reference Antibody (HKT288) is more than 97.93%, determined by SEC-HPLC.



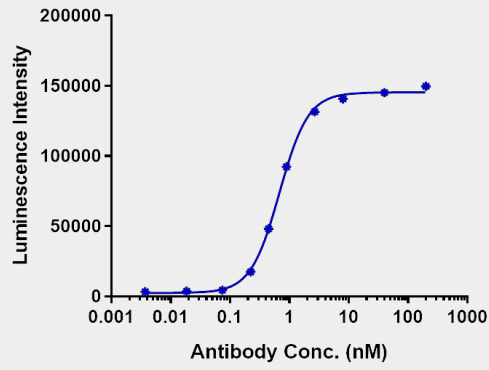
Immobilized Cyno CDH6 His at 2 µg/mL can bind Anti-CDH6 / K-Cadherin Reference Antibody (HKT288) EC₅₀=0.006944 µg/mL.



Human CDH6 HEK293(A6) cells were stained with Anti-CDH6 / K-Cadherin Reference Antibody (HKT288) and negative control protein respectively, washed and then followed by PE and analyzed with FACS, EC₇₁=0.08624 µg/mL



The endocytosis ratio HKT288 by Hu-CDH6-HEK293(A6) increased with the increase of antibody concentration, and the Internalization Rate (%) reached 93% at antibody concentration of 2 nM.



HKT288 induced OVCAR3 Luciferase activity was evaluated using huCD16a(V158)-NF-AT-Jurkat Reporter Cell. The EC50 was approximately 0.6792 nM.