

**Anti-CDH1 / E-cadherin / CD324 Reference Antibody (Stem Centrx patent anti-Cadherin-1)
Recombinant Antibody
Catalog # APR10020**

Specification

Anti-CDH1 / E-cadherin / CD324 Reference Antibody (Stem Centrx patent anti-Cadherin-1) - Product Information

Application	FC, E, FTA
Primary Accession	P12830
Reactivity	Human, Mouse
Clonality	Monoclonal
Isotype	IgG1
Calculated MW	146.6 KDa

Anti-CDH1 / E-cadherin / CD324 Reference Antibody (Stem Centrx patent anti-Cadherin-1) - Additional Information

Target/Specificity

CDH1 / E-cadherin / CD324

Endotoxin

< 0.001EU/ µg,determined by LAL method.

Conjugation

Unconjugated

Expression system

CHO Cell

Format

Purified monoclonal antibody supplied in PBS, pH6.0, without preservative.This antibody is purified through a protein A column.

Anti-CDH1 / E-cadherin / CD324 Reference Antibody (Stem Centrx patent anti-Cadherin-1) - Protein Information

Name CDH1 ([HGNC:1748](#))

Function

Cadherins are calcium-dependent cell adhesion proteins (PubMed:11976333). They preferentially interact with themselves in a homophilic manner in connecting cells; cadherins may thus contribute to the sorting of heterogeneous cell types. CDH1 is involved in mechanisms regulating cell-cell adhesions, mobility and proliferation of epithelial cells (PubMed:11976333). Promotes organization of radial actin fiber structure and cellular response to contractile forces, via its interaction with AMOTL2 which facilitates anchoring of radial actin fibers to CDH1 junction

complexes at the cell membrane (By similarity). Has a potent invasive suppressor role. It is a ligand for integrin alpha-E/beta-7.

Cellular Location

Cell junction, adherens junction. Cell membrane; Single-pass type I membrane protein Endosome. Golgi apparatus, trans-Golgi network. Cytoplasm. Cell junction, desmosome Note=Colocalizes with DLGAP5 at sites of cell-cell contact in intestinal epithelial cells. Anchored to actin microfilaments through association with alpha-, beta- and gamma-catenin. Sequential proteolysis induced by apoptosis or calcium influx, results in translocation from sites of cell-cell contact to the cytoplasm Colocalizes with RAB11A endosomes during its transport from the Golgi apparatus to the plasma membrane. Recruited to desmosomes at the initial assembly phase and also accumulates progressively at mature desmosome cell-cell junctions (PubMed:25208567). Localizes to cell-cell contacts as keratinocyte differentiation progresses (By similarity)
{ECO:0000250|UniProtKB:P09803, ECO:0000269|PubMed:25208567}

Tissue Location

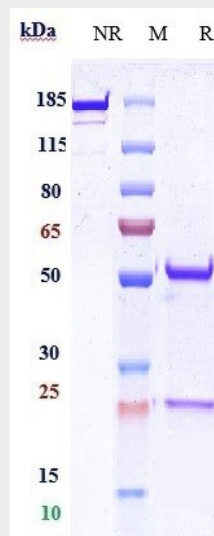
Expressed in granuloma macrophages (at protein level) (PubMed:27760340). Expressed in the skin (at protein level) (PubMed:22294297). Expressed in the liver (PubMed:3263290)

Anti-CDH1 / E-cadherin / CD324 Reference Antibody (Stem Centrx patent anti-Cadherin-1) - Protocols

Provided below are standard protocols that you may find useful for product applications.

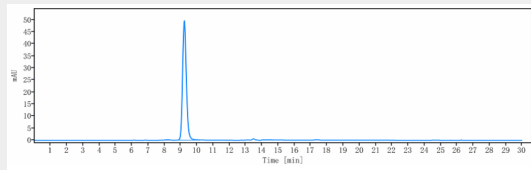
- [Western Blot](#)
- [Blocking Peptides](#)
- [Dot Blot](#)
- [Immunohistochemistry](#)
- [Immunofluorescence](#)
- [Immunoprecipitation](#)
- [Flow Cytometry](#)
- [Cell Culture](#)

Anti-CDH1 / E-cadherin / CD324 Reference Antibody (Stem Centrx patent anti-Cadherin-1) - Images

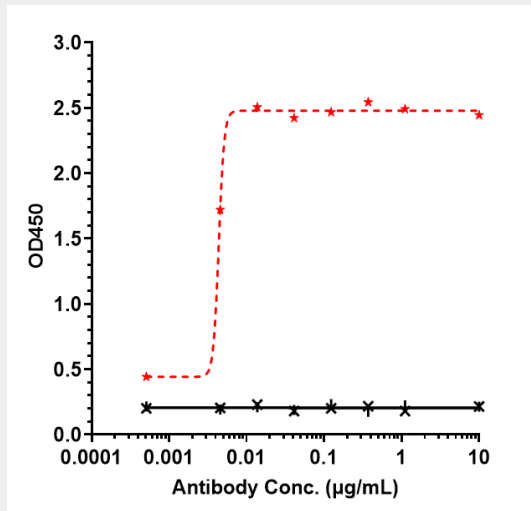


Anti-CDH1 / E-cadherin / CD324 Reference Antibody (Stem Centrx patent anti-Cadherin-1) on

SDS-PAGE under reducing (R) condition. The gel was stained with Coomassie Blue. The purity of the protein is greater than 95%



The purity of Anti-CDH1 / E-cadherin / CD324 Reference Antibody (Stem Centrx patent anti-Cadherin-1) is more than 95%, determined by SEC-HPLC.



Immobilized human CDH1 His at 2 µg/mL can bind Anti-CDH1 / E-cadherin / CD324 Reference Antibody (Stem Centrx patent anti-Cadherin-1) $EC_{50}=0.004381$ µg/mL.