

**Anti-CTLA-4 / CD152 Reference Antibody (Antitope patent anti-CTLA4)
Recombinant Antibody
Catalog # APR10018**

Specification

Anti-CTLA-4 / CD152 Reference Antibody (Antitope patent anti-CTLA4) - Product Information

Application	FC, E, FTA
Primary Accession	P16410
Reactivity	Human
Clonality	Monoclonal
Isotype	IgG1
Calculated MW	145 KDa

Anti-CTLA-4 / CD152 Reference Antibody (Antitope patent anti-CTLA4) - Additional Information

Target/Specificity
CTLA-4 / CD152

Endotoxin
< 0.001EU/ µg,determined by LAL method.

Conjugation
Unconjugated

Expression system
CHO Cell

Format
Purified monoclonal antibody supplied in PBS, pH6.0, without preservative.This antibody is purified through a protein A column.

Anti-CTLA-4 / CD152 Reference Antibody (Antitope patent anti-CTLA4) - Protein Information

Name CTLA4

Synonyms CD152

Function
Inhibitory receptor acting as a major negative regulator of T-cell responses. The affinity of CTLA4 for its natural B7 family ligands, CD80 and CD86, is considerably stronger than the affinity of their cognate stimulatory coreceptor CD28.

Cellular Location
Cell membrane; Single-pass type I membrane protein. Note=Exists primarily an intracellular antigen whose surface expression is tightly regulated by restricted trafficking to the cell surface

and rapid internalization

Tissue Location

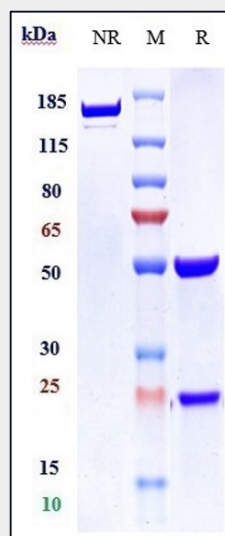
Widely expressed with highest levels in lymphoid tissues. Detected in activated T-cells where expression levels are 30- to 50-fold less than CD28, the stimulatory coreceptor, on the cell surface following activation.

Anti-CTLA-4 / CD152 Reference Antibody (Antitope patent anti-CTLA4) - Protocols

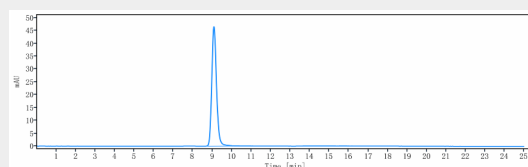
Provided below are standard protocols that you may find useful for product applications.

- [Western Blot](#)
- [Blocking Peptides](#)
- [Dot Blot](#)
- [Immunohistochemistry](#)
- [Immunofluorescence](#)
- [Immunoprecipitation](#)
- [Flow Cytometry](#)
- [Cell Culture](#)

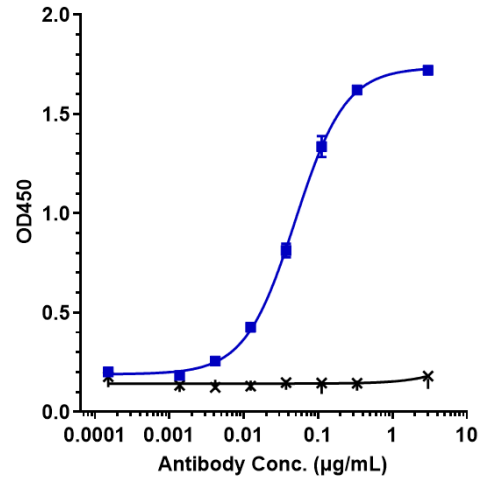
Anti-CTLA-4 / CD152 Reference Antibody (Antitope patent anti-CTLA4) - Images



Anti-CTLA-4 / CD152 Reference Antibody (Antitope patent anti-CTLA4) on SDS-PAGE under reducing (R) condition. The gel was stained with Coomassie Blue. The purity of the protein is greater than 90%



The purity of Anti-CTLA-4 / CD152 Reference Antibody (Antitope patent anti-CTLA4) is more than 95% ,determined by SEC-HPLC.



Immobilized human CTLA 4 His at 2 µg/mL can bind Anti-CTLA-4 / CD152 Reference Antibody (Antitope patent anti-CTLA4) □EC50=0.04907 µg/mL.