

**Anti-CCN2 / CTGF Reference Antibody (pamrevlumab)
Recombinant Antibody
Catalog # APR10017**

Specification

Anti-CCN2 / CTGF Reference Antibody (pamrevlumab) - Product Information

Application	FC, E, FTA
Primary Accession	P29279
Reactivity	Rat, Human, Mouse, Rabbit
Clonality	Monoclonal
Isotype	IgG1
Calculated MW	144.86 KDa

Anti-CCN2 / CTGF Reference Antibody (pamrevlumab) - Additional Information

Target/Specificity
CCN2 / CTGF

Endotoxin
< 0.001EU/ µg,determined by LAL method.

Conjugation
Unconjugated

Expression system
CHO Cell

Format
Purified monoclonal antibody supplied in PBS, pH6.0, without preservative.This antibody is purified through a protein A column.

Anti-CCN2 / CTGF Reference Antibody (pamrevlumab) - Protein Information

Name CCN2 ([HGNC:2500](#))

Function
Major connective tissue mitogen secreted by vascular endothelial cells. Promotes proliferation and differentiation of chondrocytes. Mediates heparin- and divalent cation-dependent cell adhesion in many cell types including fibroblasts, myofibroblasts, endothelial and epithelial cells. Enhances fibroblast growth factor- induced DNA synthesis.

Cellular Location
Secreted, extracellular space, extracellular matrix {ECO:0000250|UniProtKB:P29268}. Secreted {ECO:0000250|UniProtKB:P29268}

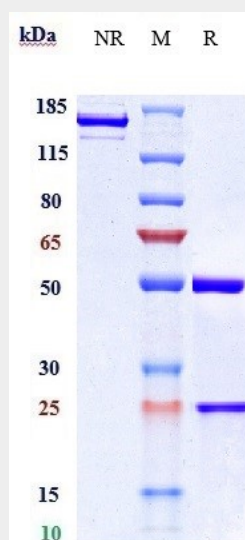
Tissue Location
Expressed in bone marrow and thymic cells. Also expressed one of two Wilms tumors tested.

Anti-CCN2 / CTGF Reference Antibody (pamrevlumab) - Protocols

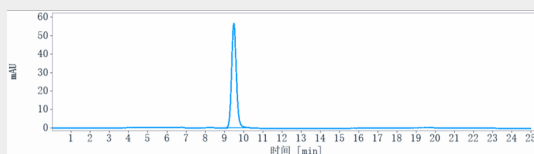
Provided below are standard protocols that you may find useful for product applications.

- [Western Blot](#)
- [Blocking Peptides](#)
- [Dot Blot](#)
- [Immunohistochemistry](#)
- [Immunofluorescence](#)
- [Immunoprecipitation](#)
- [Flow Cytometry](#)
- [Cell Culture](#)

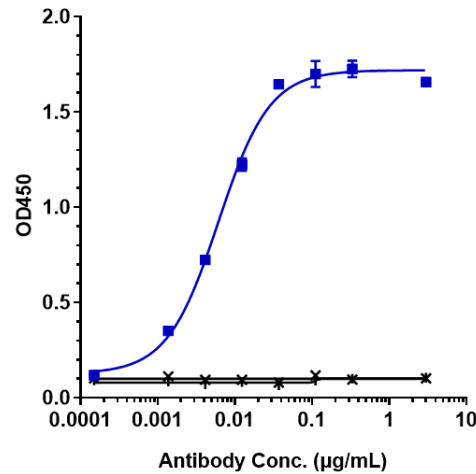
Anti-CCN2 / CTGF Reference Antibody (pamrevlumab) - Images



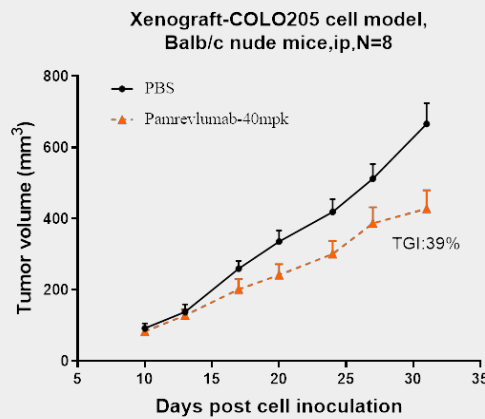
Anti-CCN2 / CTGF Reference Antibody (pamrevlumab) on SDS-PAGE under reducing (R) condition. The gel was stained with Coomassie Blue. The purity of the protein is greater than 95%



The purity of Anti-CCN2 / CTGF Reference Antibody (pamrevlumab) is more than 100%, determined by SEC-HPLC.



Immobilized human CTGF His at 2 µg/mL can bind Anti-CCN2 / CTGF Reference Antibody (pamrevlumab) EC₅₀=0.006105 µg/mL.



Pamrevlumab inhibited the tumor growth of COLO205 on Balb/c nude mice. The result showed significant anti-tumor effects, with an tumor inhibition rate (TGI) of 39% at 40 mpk at D31.