

Anti-CLDN6 Reference Antibody (AB3-7)
Recombinant Antibody
Catalog # APR10014

Specification

Anti-CLDN6 Reference Antibody (AB3-7) - Product Information

Application	FC, E, FTA
Primary Accession	P56747
Reactivity	Human
Clonality	Monoclonal
Isotype	IgG1
Calculated MW	78.02 KDa

Anti-CLDN6 Reference Antibody (AB3-7) - Additional Information

Target/Specificity
CLDN6

Endotoxin
< 0.001EU/ µg,determined by LAL method.

Conjugation
Unconjugated

Expression system
CHO Cell

Format
Purified monoclonal antibody supplied in PBS, pH6.0, without preservative.This antibody is purified through a protein A column.

Storage
-80°C for 2 years under sterile conditions □ -20°C for 1 year under sterile conditions □ Avoid repeated freeze-thaw cycles.

Anti-CLDN6 Reference Antibody (AB3-7) - Protein Information

Name CLDN6

Function
Plays a major role in tight junction-specific obliteration of the intercellular space.

Cellular Location
Cell junction, tight junction {ECO:0000250|UniProtKB:Q9Z262}. Cell membrane; Multi-pass membrane protein

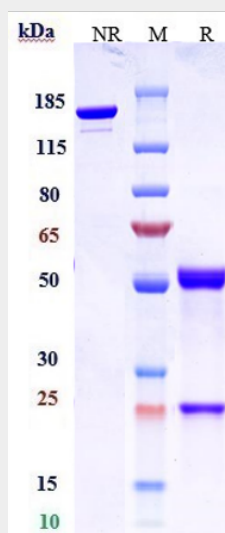
Tissue Location
Expressed in the liver, in peripheral blood mononuclear cells and hepatocarcinoma cell lines

Anti-CLDN6 Reference Antibody (AB3-7) - Protocols

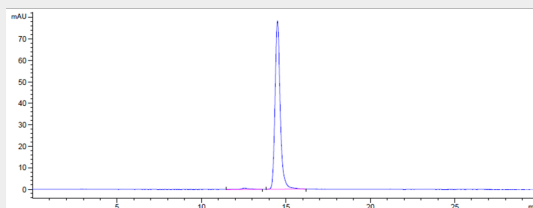
Provided below are standard protocols that you may find useful for product applications.

- [Western Blot](#)
- [Blocking Peptides](#)
- [Dot Blot](#)
- [Immunohistochemistry](#)
- [Immunofluorescence](#)
- [Immunoprecipitation](#)
- [Flow Cytometry](#)
- [Cell Culture](#)

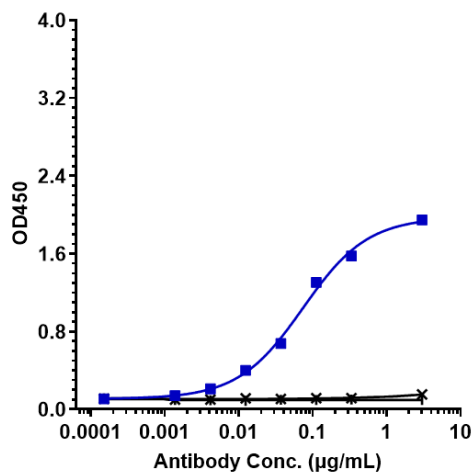
Anti-CLDN6 Reference Antibody (AB3-7) - Images



Anti-CLDN6 Reference Antibody (AB3-7) on SDS-PAGE under reducing (R) condition. The gel was stained with Coomassie Blue. The purity of the protein is greater than 95%



The purity of Anti-CLDN6 Reference Antibody (AB3-7) is more than 98.56%, determined by SEC-HPLC.



Immobilized human CLDN6 VLP Protein at 2 µg/mL can bind Anti-CLDN6 Reference Antibody (AB3-7) □EC₅₀=0.07358 µg/mL.