

**Anti-CALCRL / CGRPR Reference Antibody (erenumab)
Recombinant Antibody
Catalog # APR10013****Specification**

Anti-CALCRL / CGRPR Reference Antibody (erenumab) - Product Information

Application	FC, E, FTA
Primary Accession	Q16602
Reactivity	Cynomolgus, Human
Clonality	Monoclonal
Isotype	IgG2SA
Calculated MW	146.2 KDa

Anti-CALCRL / CGRPR Reference Antibody (erenumab) - Additional Information**Target/Specificity**
CALCRL / CGRPR**Endotoxin**
< 0.001EU/ µg, determined by LAL method.**Conjugation**
Unconjugated**Expression system**
CHO Cell**Format**
Purified monoclonal antibody supplied in PBS, pH6.0, without preservative. This antibody is purified through a protein A column.**Anti-CALCRL / CGRPR Reference Antibody (erenumab) - Protein Information****Name** CALCRL ([HGNC:16709](#))**Synonyms** CGRPR**Function**
G protein-coupled receptor which specificity is determined by its interaction with receptor-activity-modifying proteins (RAMPs) (PubMed: [32296767](http://www.uniprot.org/citations/32296767), PubMed: [33602864](http://www.uniprot.org/citations/33602864), PubMed: [8626685](http://www.uniprot.org/citations/8626685)). Together with RAMP1, form the receptor complex for calcitonin-gene-related peptides CALCA/CGRP1 and CALCB/CGRP2 (PubMed: [33602864](http://www.uniprot.org/citations/33602864)). Together with RAMP2 or RAMP3, function as receptor complexes for adrenomedullin (ADM and ADM2) (PubMed: [32296767](http://www.uniprot.org/citations/32296767), PubMed: [32296767](http://www.uniprot.org/citations/32296767)).

<http://www.uniprot.org/citations/9620797> target="_blank">9620797). Ligand binding causes a conformation change that triggers signaling via guanine nucleotide-binding proteins (G proteins) and modulates the activity of downstream effectors. Activates cAMP-dependent pathway (PubMed:32296767, PubMed:8626685).

Cellular Location

Cell membrane; Multi-pass membrane protein

Tissue Location

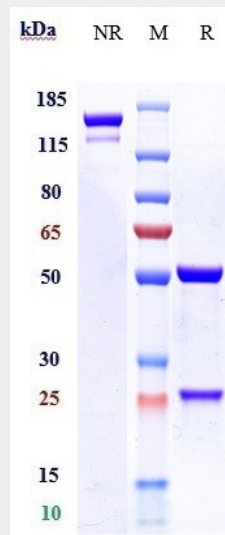
Predominantly expressed in the lung and heart.

Anti-CALCRL / CGRPR Reference Antibody (erenumab) - Protocols

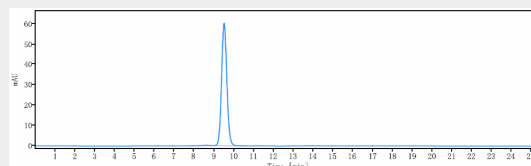
Provided below are standard protocols that you may find useful for product applications.

- [Western Blot](#)
- [Blocking Peptides](#)
- [Dot Blot](#)
- [Immunohistochemistry](#)
- [Immunofluorescence](#)
- [Immunoprecipitation](#)
- [Flow Cytometry](#)
- [Cell Culture](#)

Anti-CALCRL / CGRPR Reference Antibody (erenumab) - Images

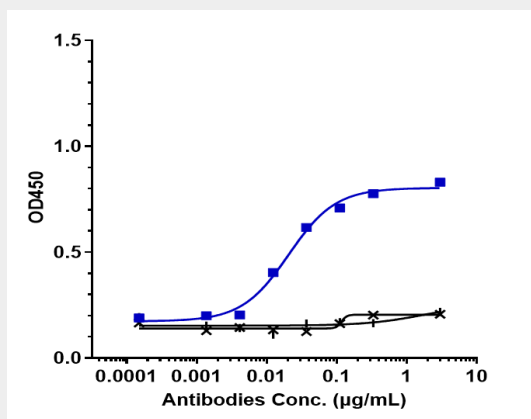


Anti-CALCRL / CGRPR Reference Antibody (erenumab) on SDS-PAGE under reducing (R) condition. The gel was stained with Coomassie Blue. The purity of the protein is greater than 95%



The purity of Anti-CALCRL / CGRPR Reference Antibody (erenumab) is more than 99.43%

,determined by SEC-HPLC.



Immobilized human CGRPR VLP Protein at 16 µg/mL can bind Anti-CALCRL / CGRPR Reference Antibody (erenumab) $EC_{50}=0.0206$ µg/mL.